

2009

Game Console Connectivity

Information Technology

It is possible to connect your internet ready game consoles (XBOX , XBOX 360, Playstation 2, Playstation 3, Nintendo Wii, Gamecube, etc) to the TLU Network to play online games. However, if you have a computer and a video game console, only one of them can use the network at a time.



Game Console Connectivity

Like a computer, each of these devices has a hardware address that must be registered on TLU's network for the device to have access to the network. To register a console, its unique adapter (MAC) address must be added to the system.

If you have a computer and a video game console, **only one of them** can use the network at a time.

Bring this page to the helpdesk or email ishelp@tlu.edu with the following information:

Student Name : _____

Student ID# : _____

Room Number : _____

Console Type : _____

Mac Address : _____

How To Find The Hardware Address

XBOX Configuration	4
Xbox 360 Configuration	6
Playstation 2 Configuration	9
Playstation 3 Configuration	12
Wii Configuration	14
Gamecube Configuration	17

XBOX Configuration

Finding the Xbox's adapter address

1. Turn on your XBOX console with no game disc in the disc tray.
2. From the XBOX Dashboard, choose **Settings**.



3. From the Settings screen, select **Network Settings**.



- The MAC address is the **12-digit number** at the bottom-right corner of the Network Settings screen.



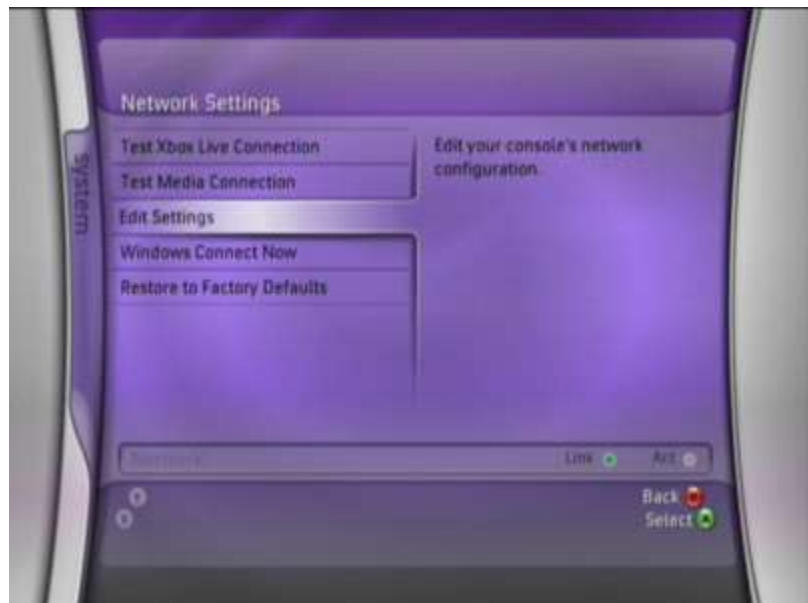
Xbox 360 Configuration

Finding the Xbox 360's adapter address

1. Go to the System area of the Xbox Dashboard and select Network Settings.



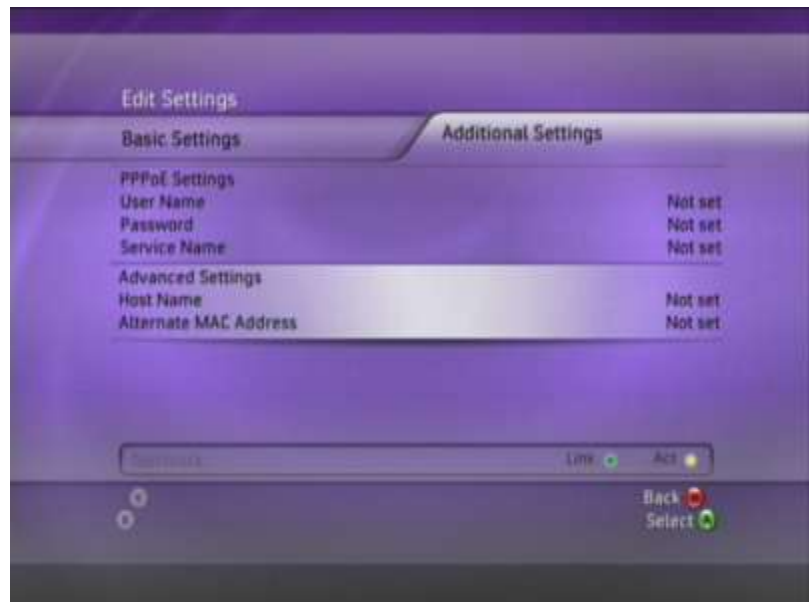
2. Select Edit Settings.



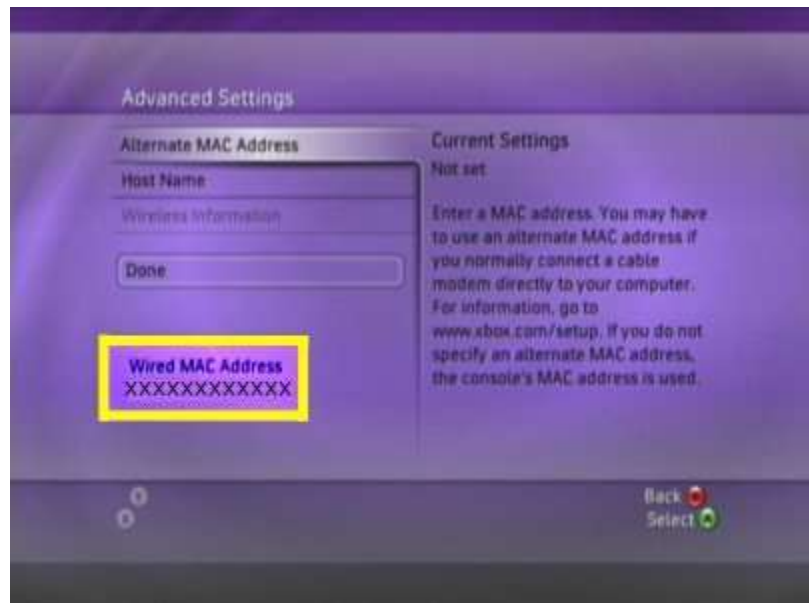
3. Under Basic Settings, check to make sure the IP Settings is on Automatic.



4. Now go to Additional Settings, select Advanced Settings.



5. At the bottom of this screen you'll see a heading called Wired MAC Address.



Playstation 2 Configuration

Finding the PS2's adapter address

1. Install the network adapter given in the installation guide or on the PlayStation2 Network Adapter Web site. Once you have the network adapter installed you are ready to begin the ISP Setup process.
2. Power up the PlayStation 2 and load the Network Adaptor Startup Disc.
3. Once it has loaded, select ISP Setup and press X.



4. The ISP SETUP will begin to load, and you will be presented with a license agreement. Select Agree and press X to continue.



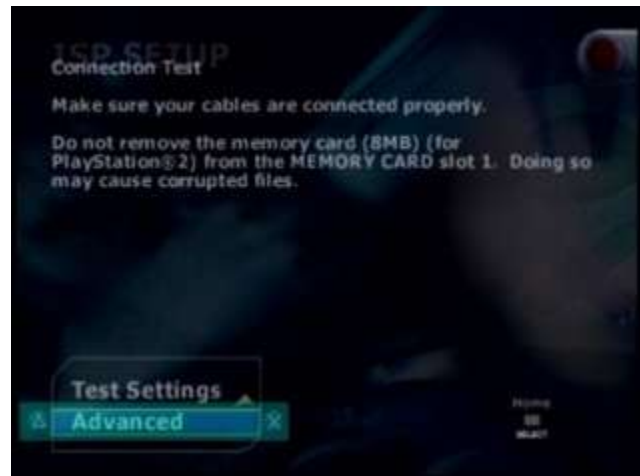
5. For connection type, choose Local Area Network (LAN) and press X to continue.



6. Select Automatic Configuration and press X to continue.



7. At the connection test screen, select Advanced and press X to continue.



8. At the Advanced Broadband Settings screen, make sure Automatic is selected. While you are at this screen, make note of the MAC Address at the bottom. You will need this number to register your game console.



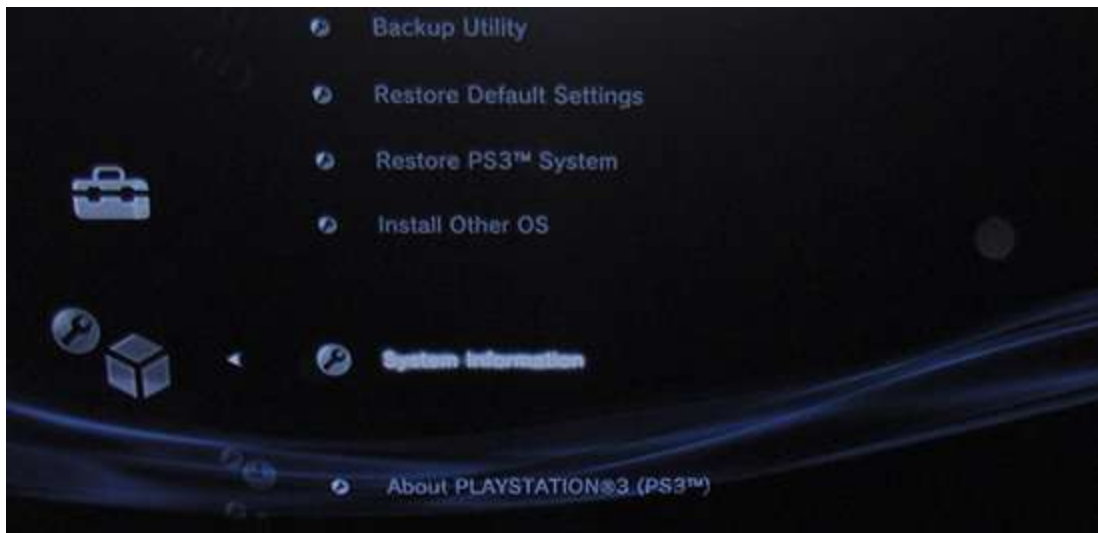
Playstation 3 Configuration

Finding the Playstation 3's adapter address

1. Go to "Settings" on the Cross Media Bar (XMB) and select "System Settings."



2. Scroll down and select "System Information"



3. Your MAC Address will be the first item listed.



Wii Configuration

Finding the Wii's adapter address

1. On the Wii home menu press the Wii button in the lower left corner.



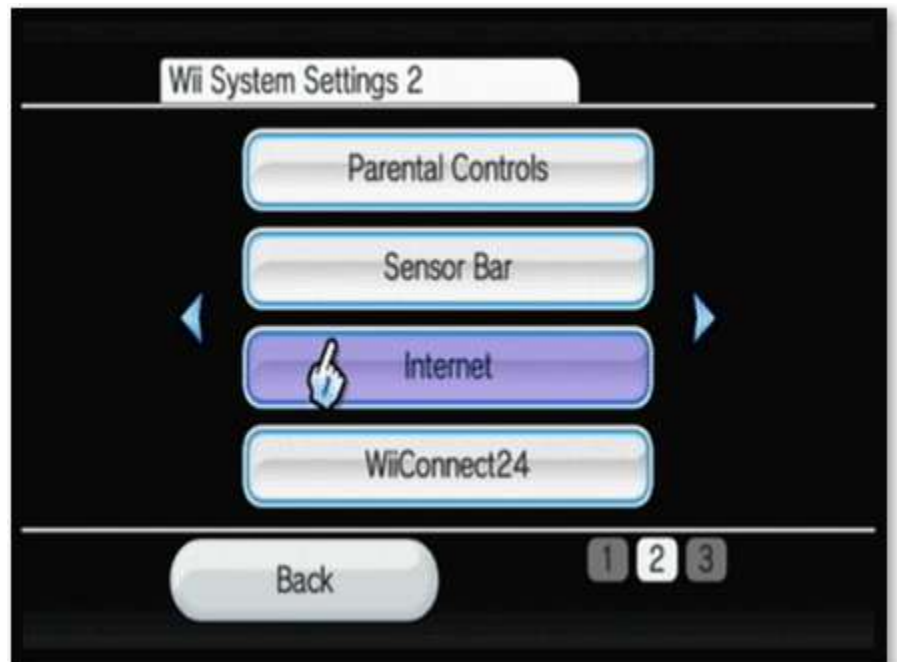
2. Select "Wii Settings."



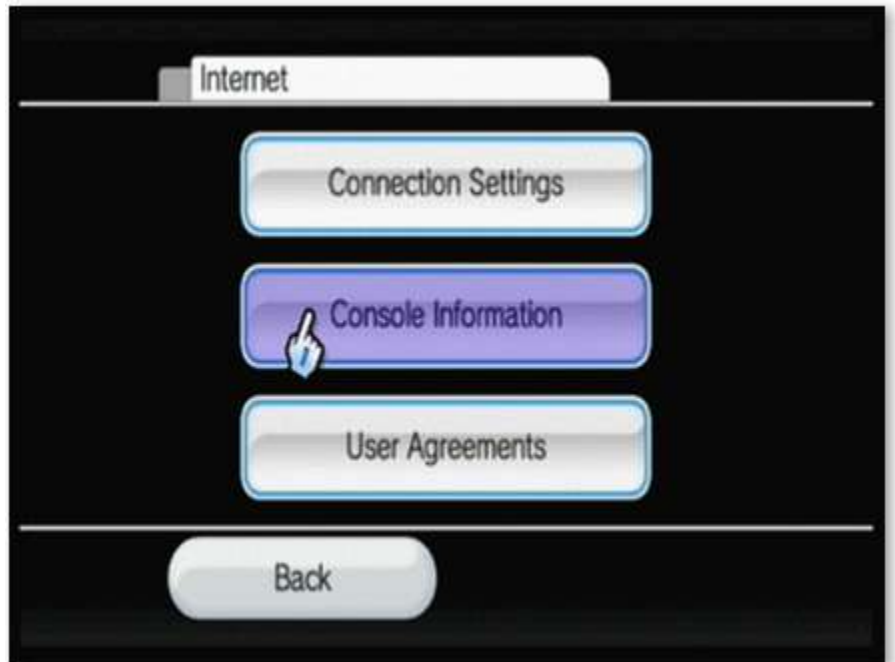
3. Scroll to page 2 by selecting the right arrow in the settings screen.



4. Select "Internet."



5. Select "Console Information."



6. The adapter (MAC) address will be displayed at the top of the screen.



Gamecube Configuration

Finding the Gamecube's Adapter Address

1. Remove the Gamecube broadband adapter from the bottom of the Gamecube
2. The adapter address is written on the bottom of the adapter

