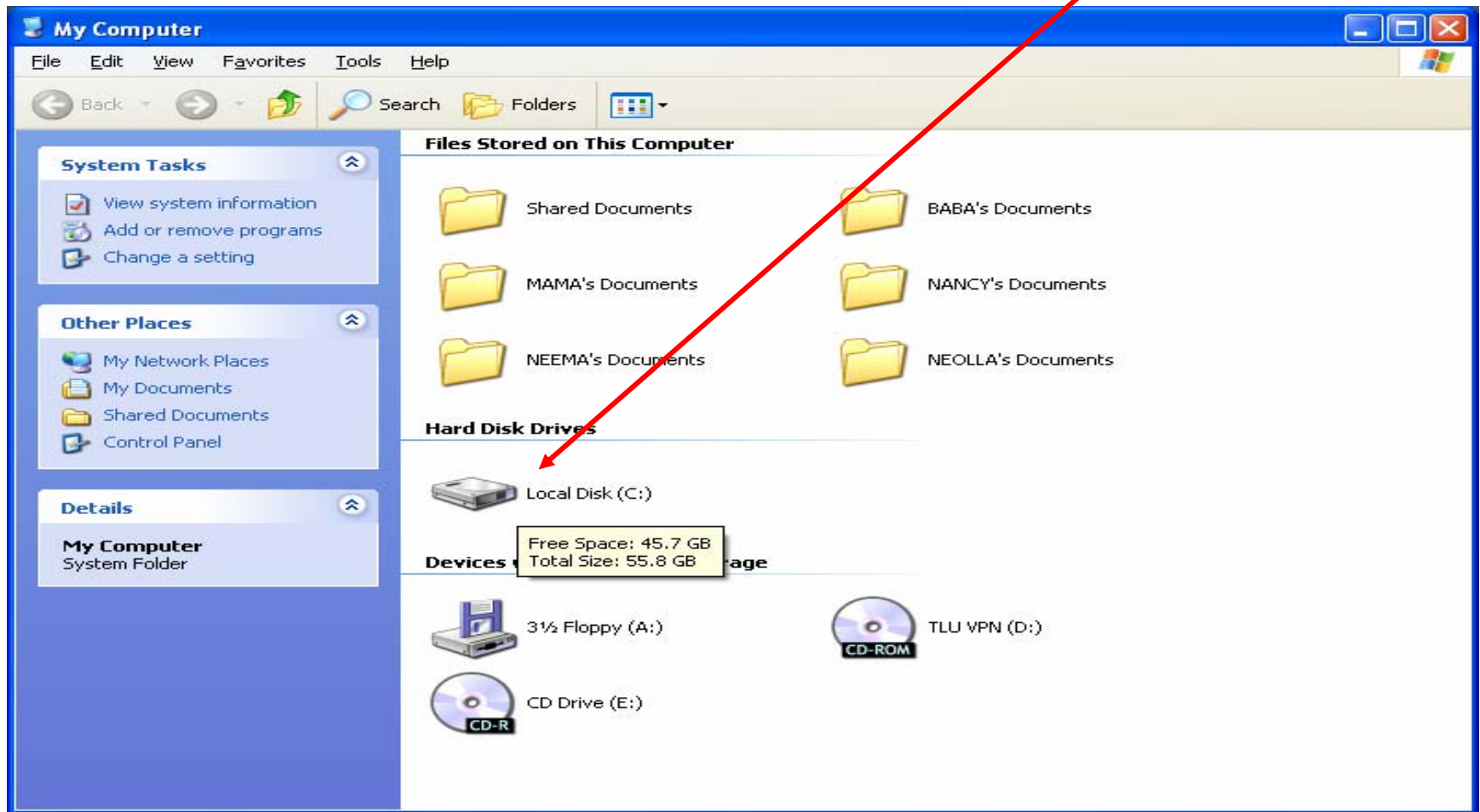


Double click My Computer Icon and Open local 'C' Drive



Create a New Folder and Name it 'VPN'

1.



Make a new folder

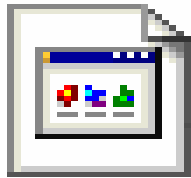
2.



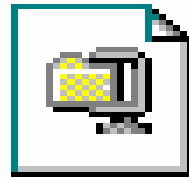
VPN

1. Insert TLU VPN CD in your CD drive...wait for installation window to open.
2. Double click '**vpnclient-wi**' icon

Files Currently on the CD

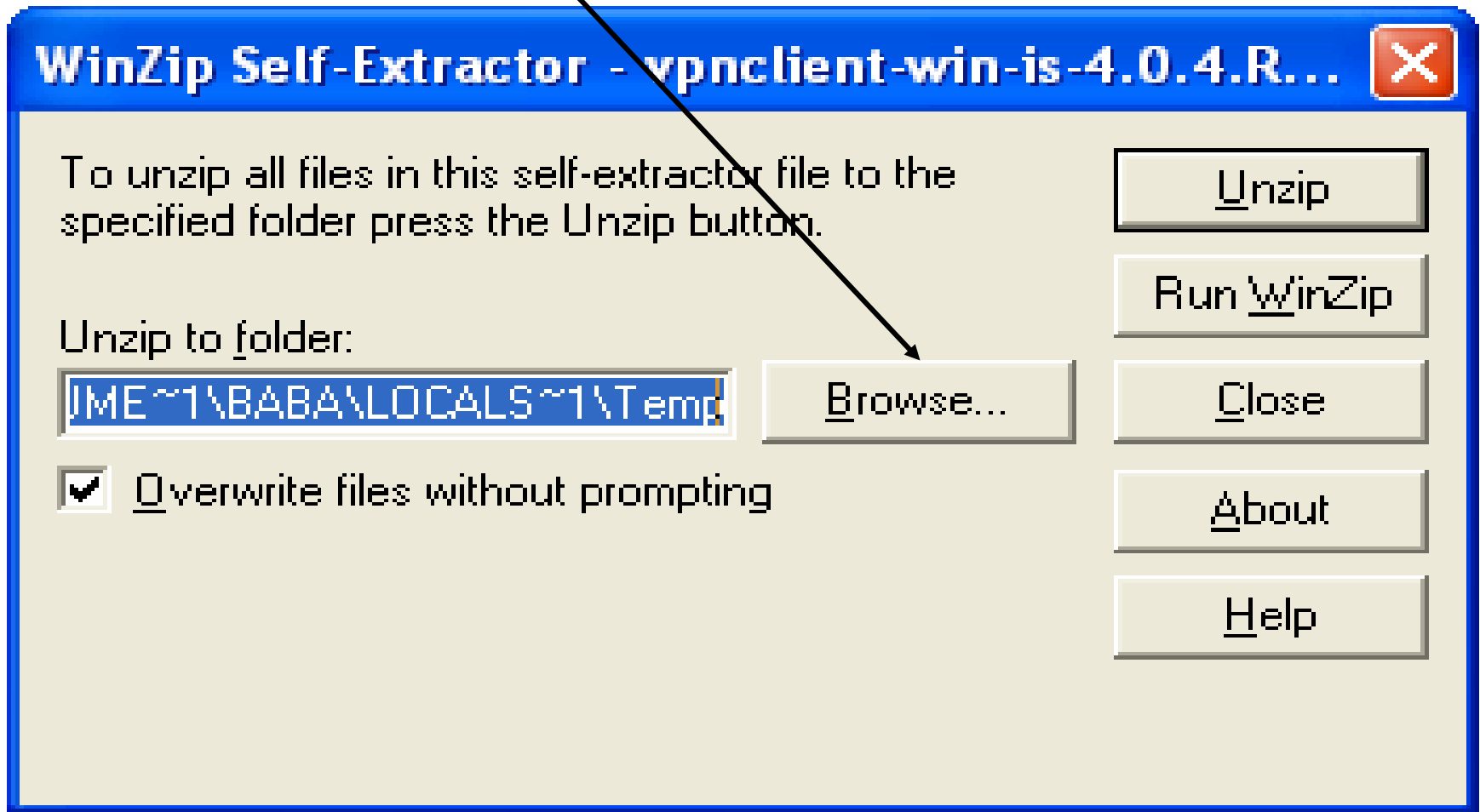


TLU VPN
New.pcf

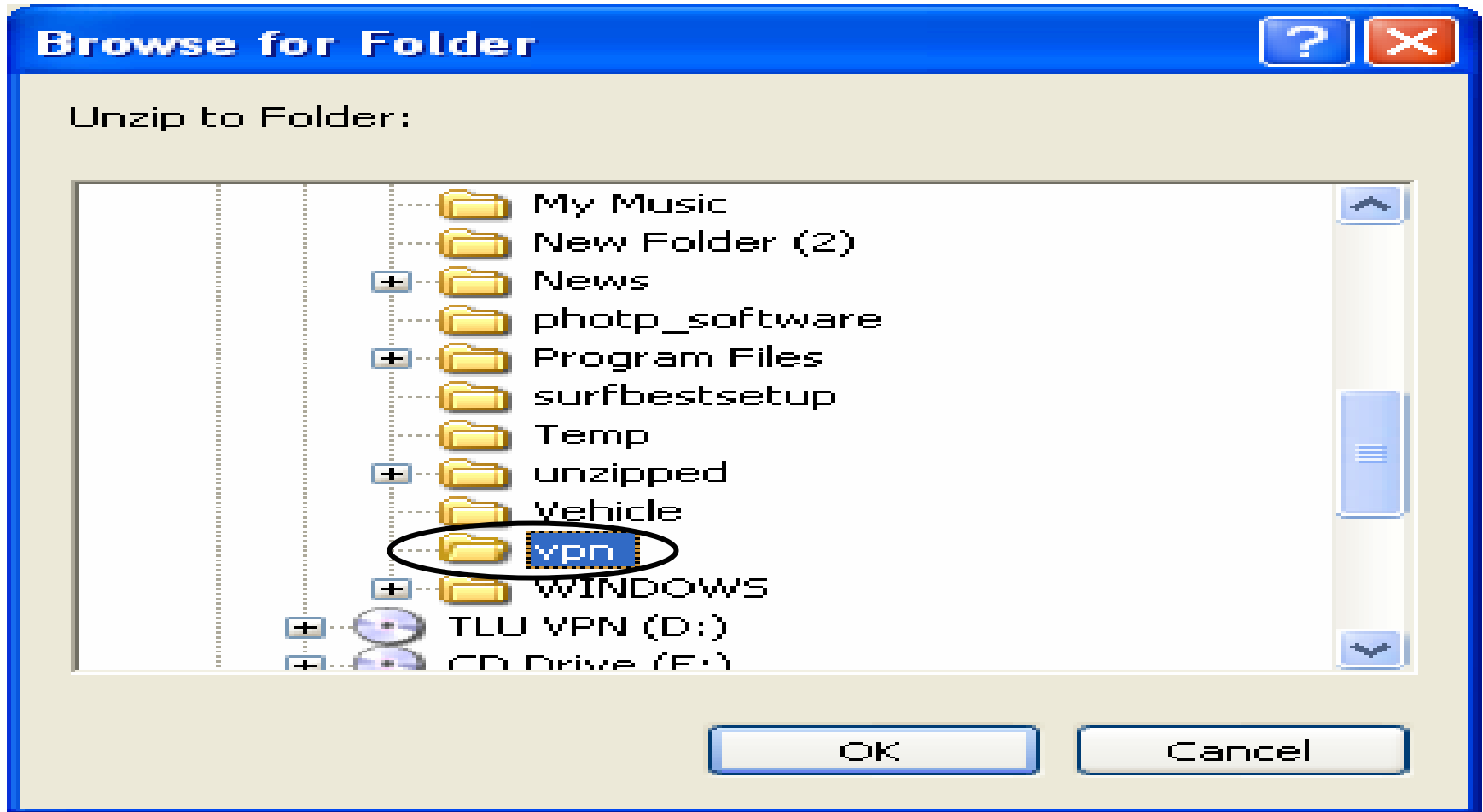


vpnclient-wi...

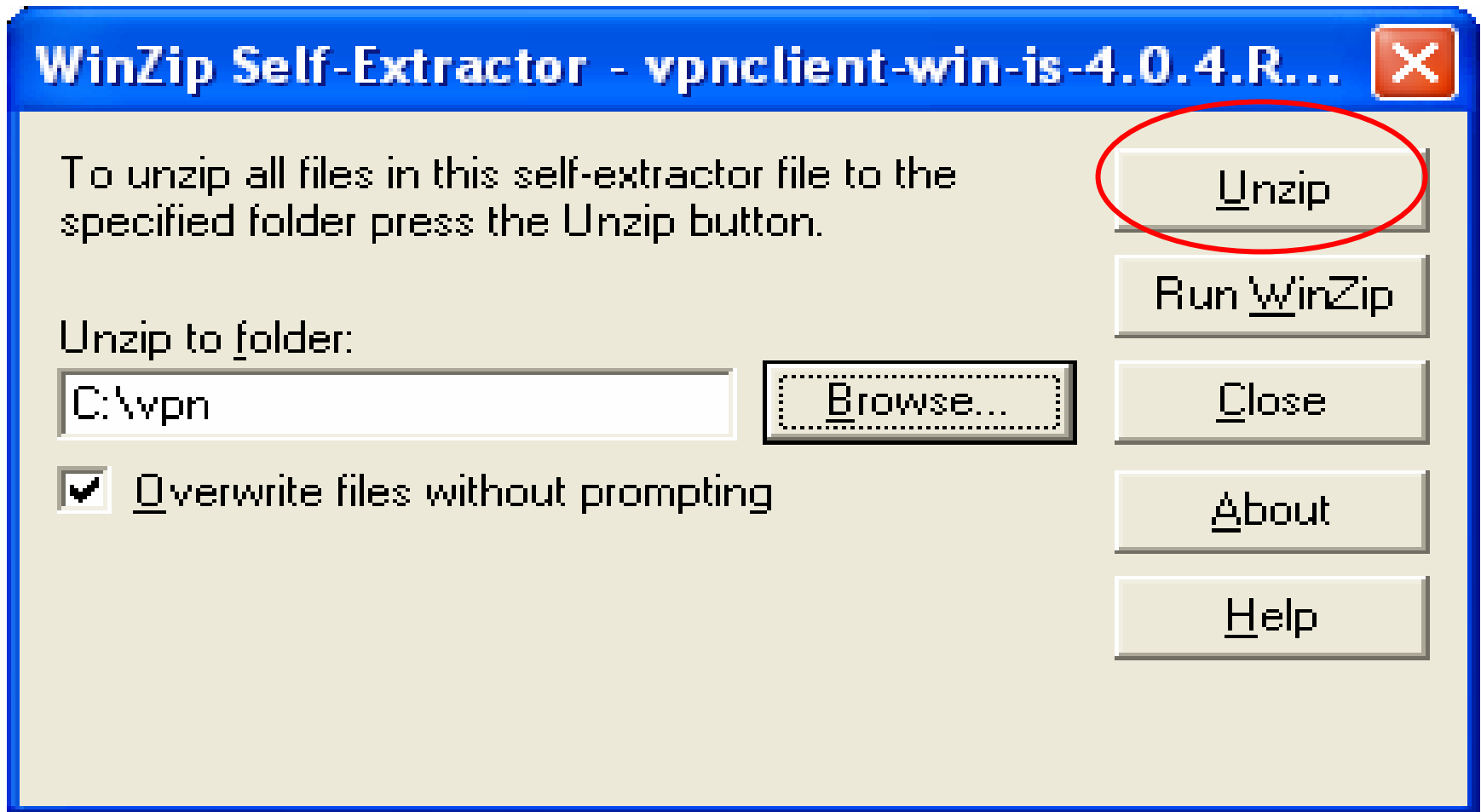
Click Browse to Locate your new VPN folder



Select VPN folder and Click Ok.



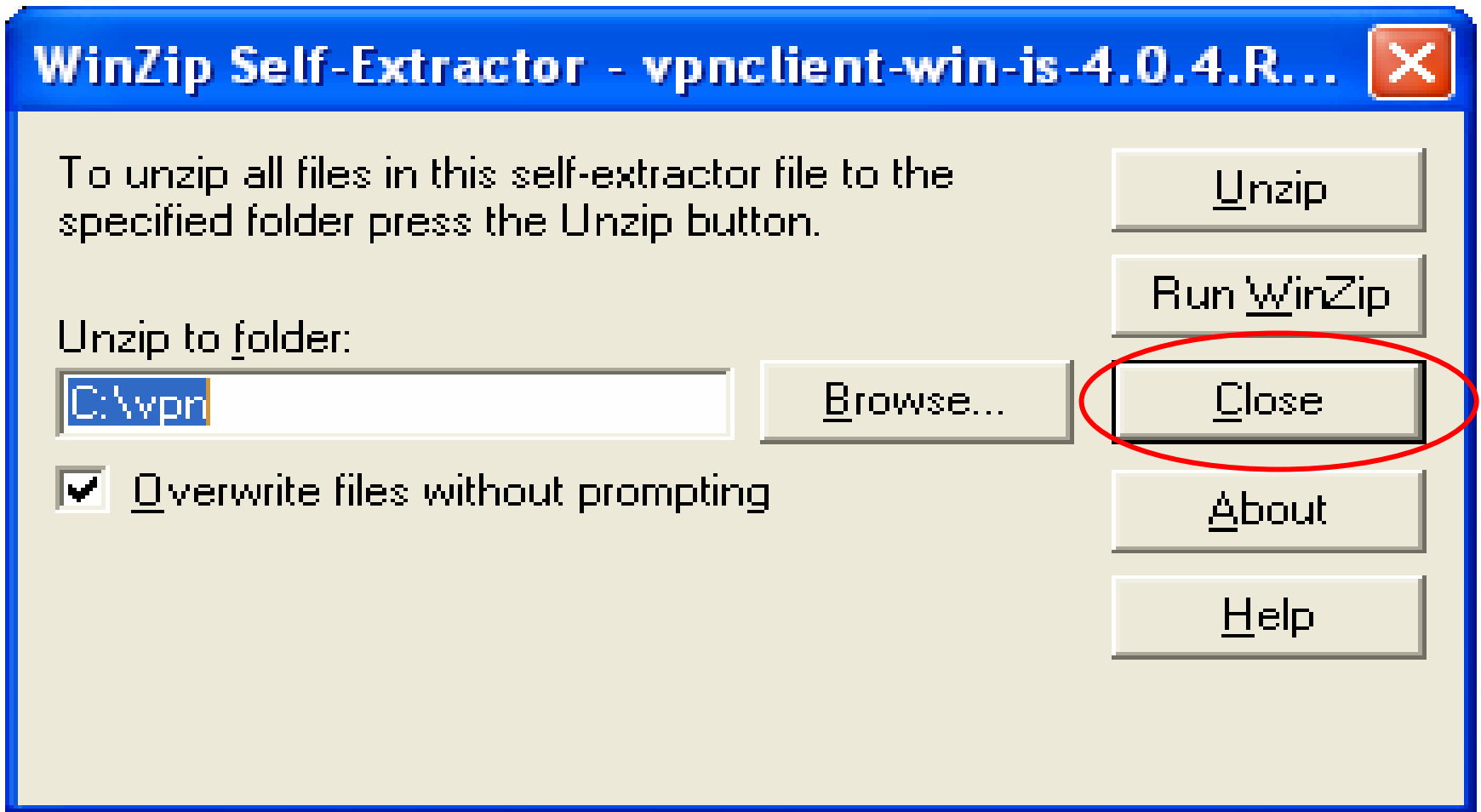
Select Unzip button



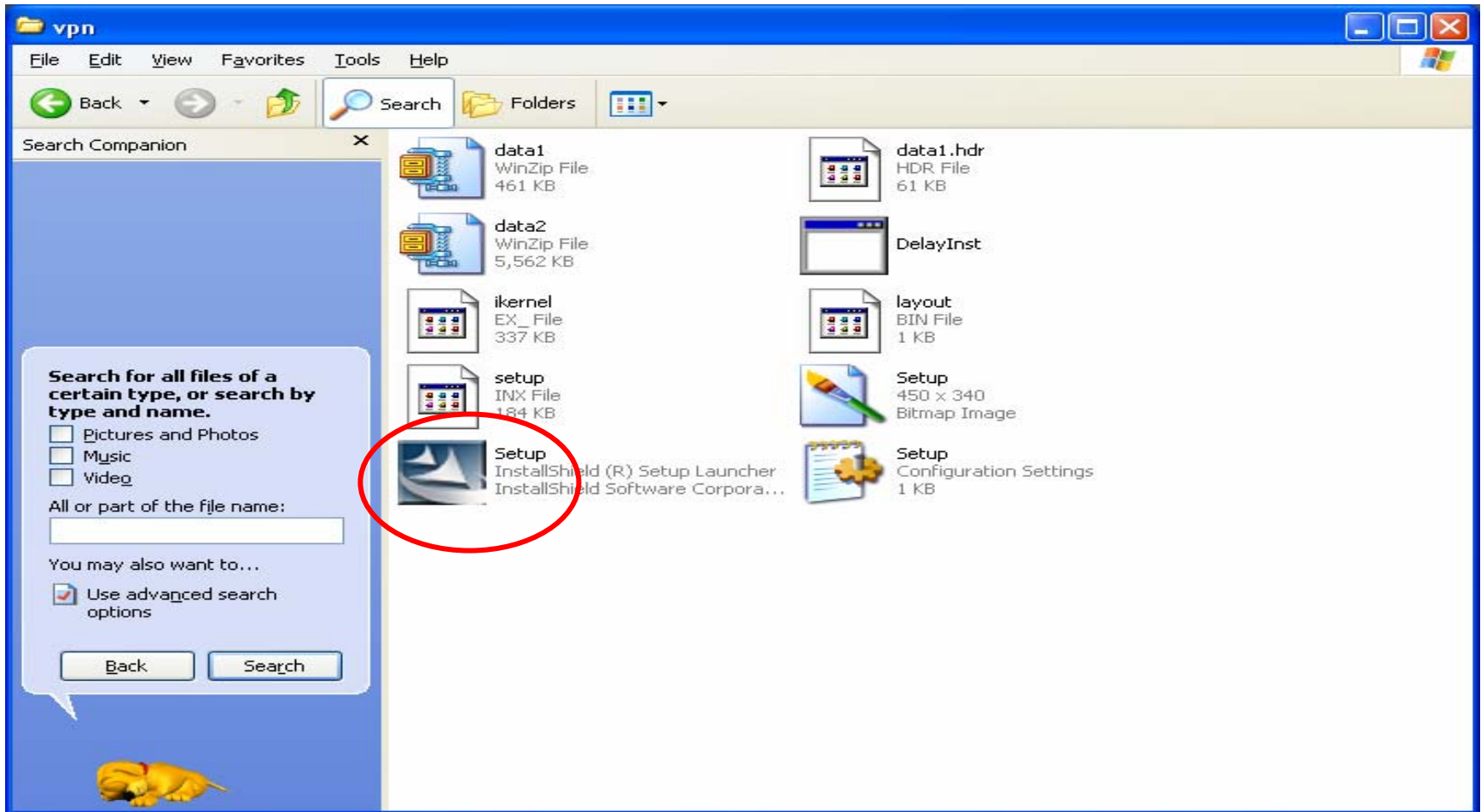
Click Ok



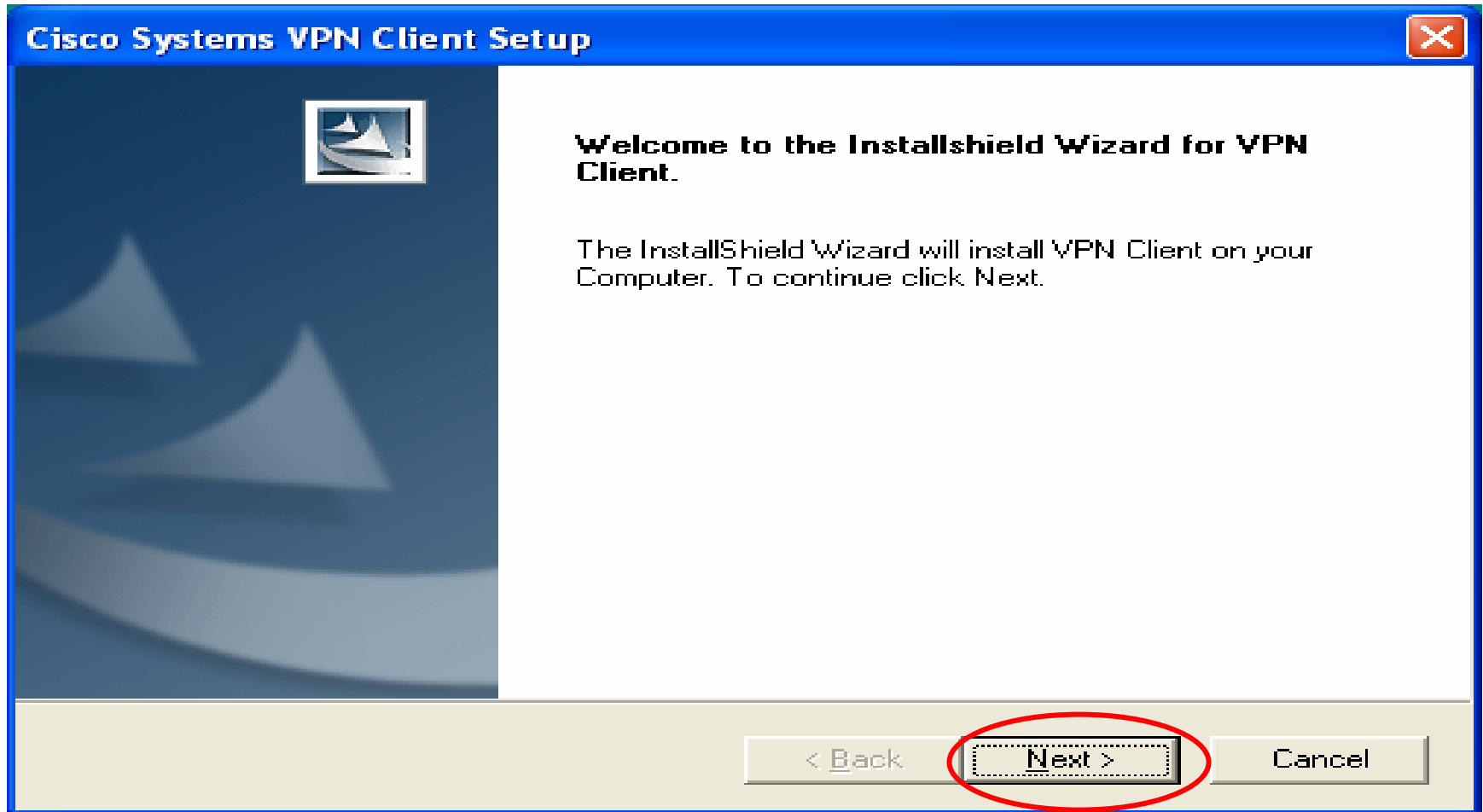
Click Close



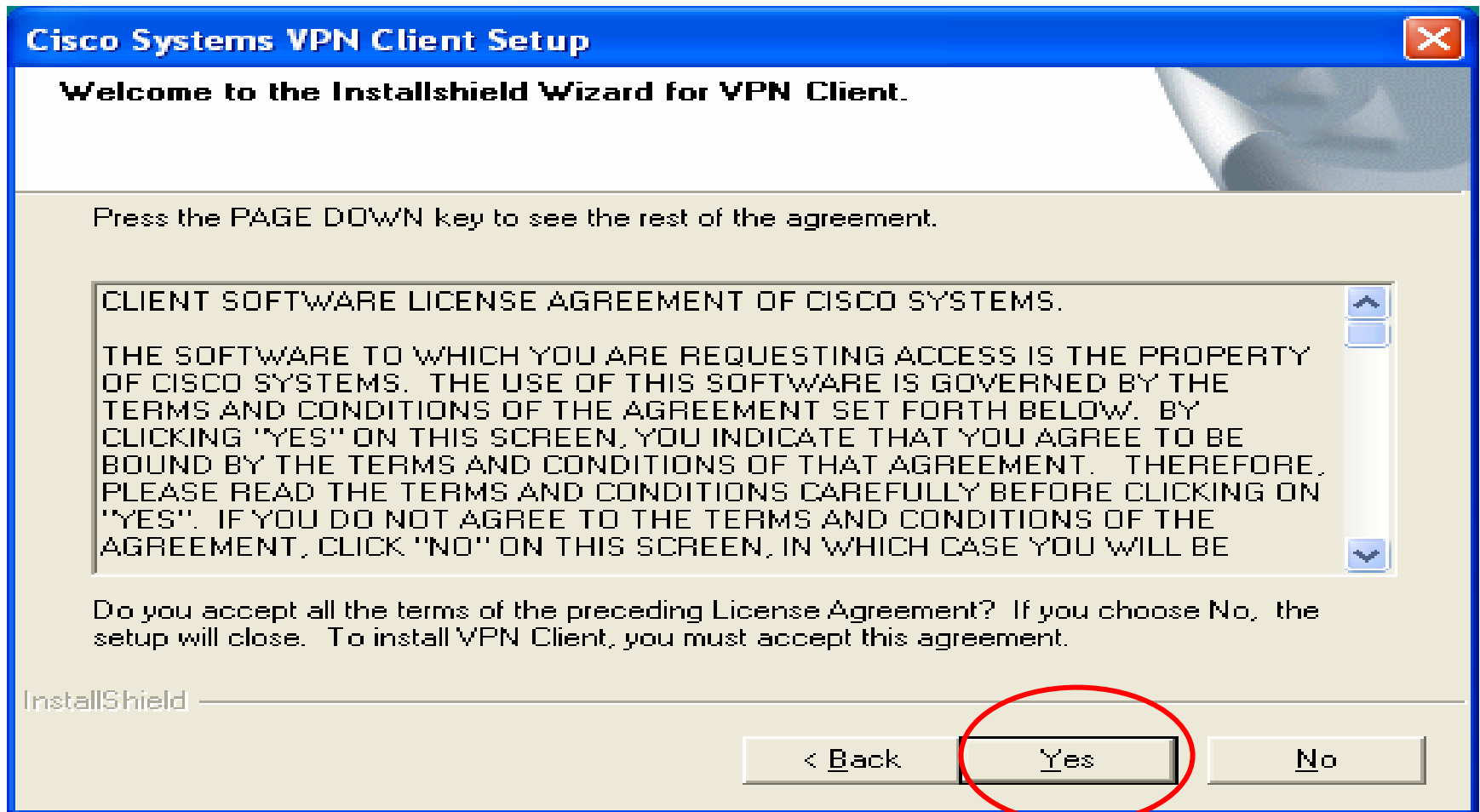
Open your VPN Folder and double click Setup Icon



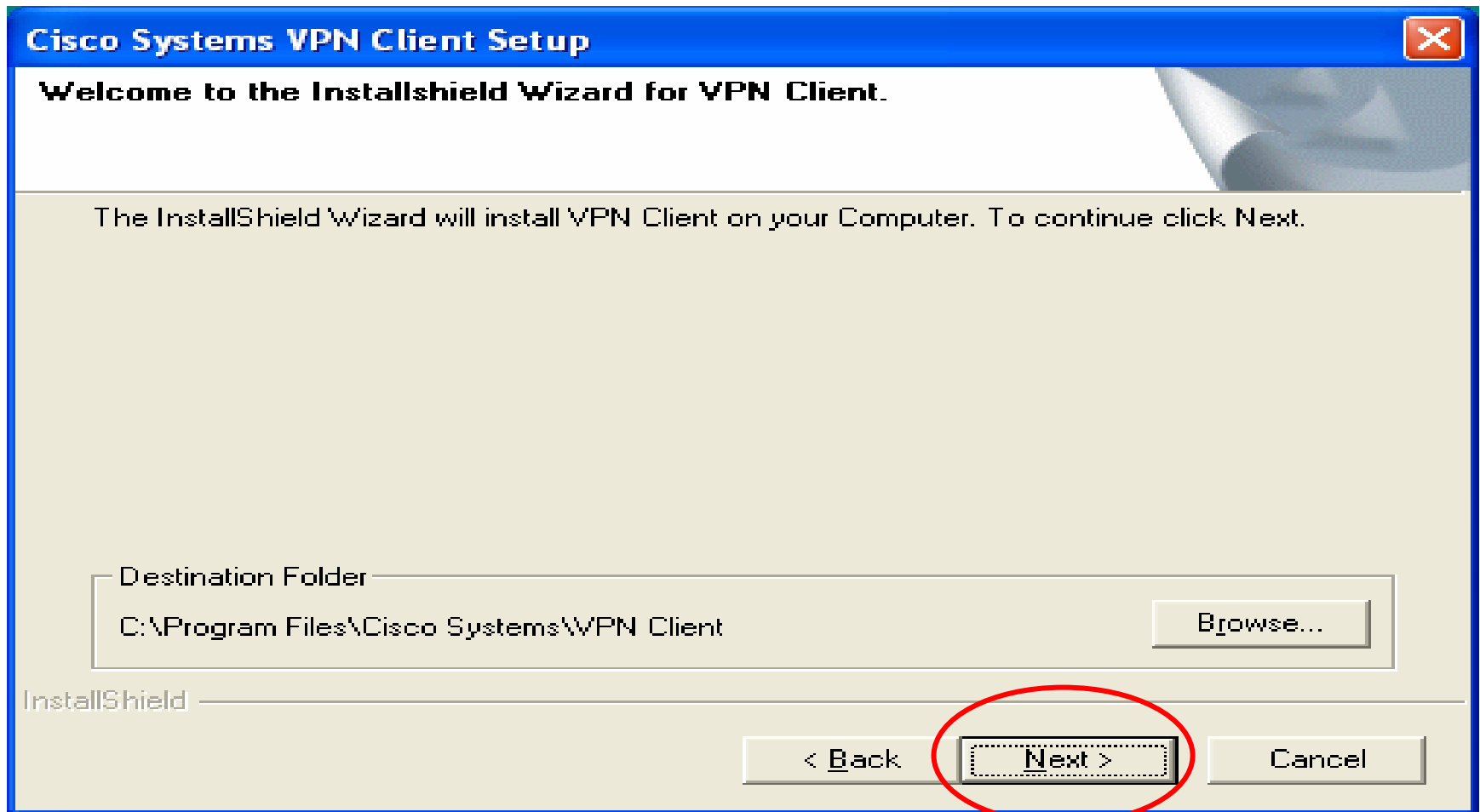
Click Next button



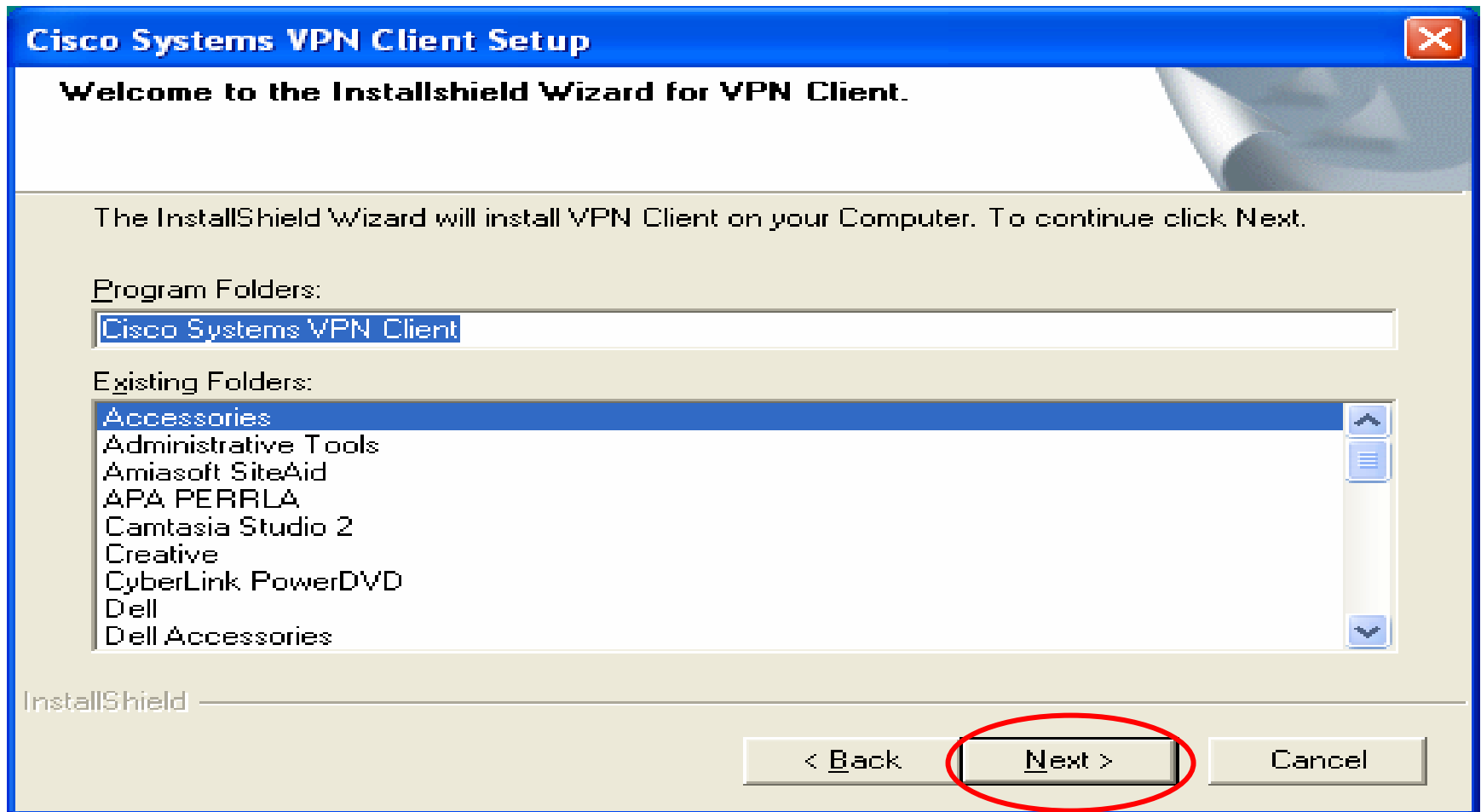
Select Yes button



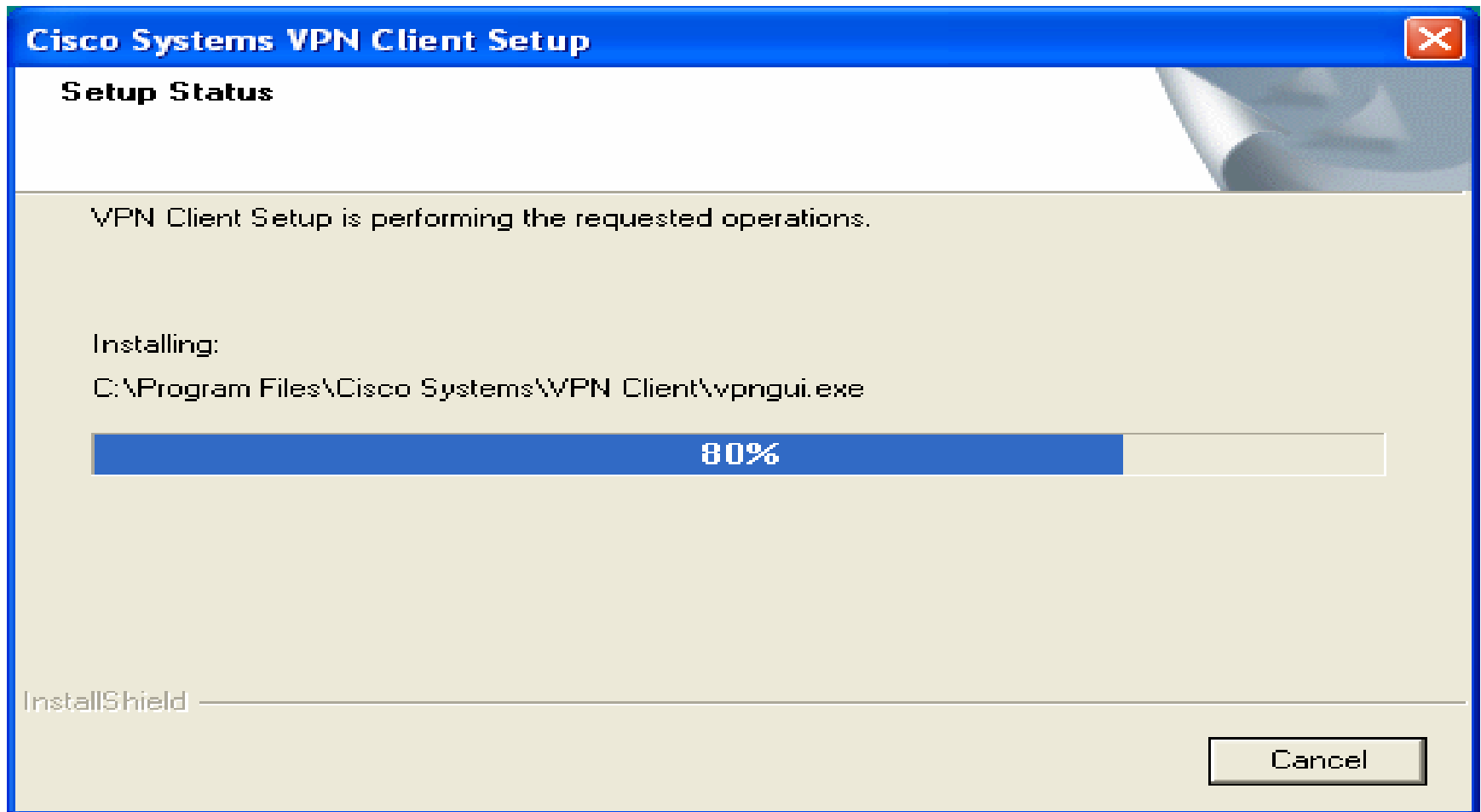
Select Next button



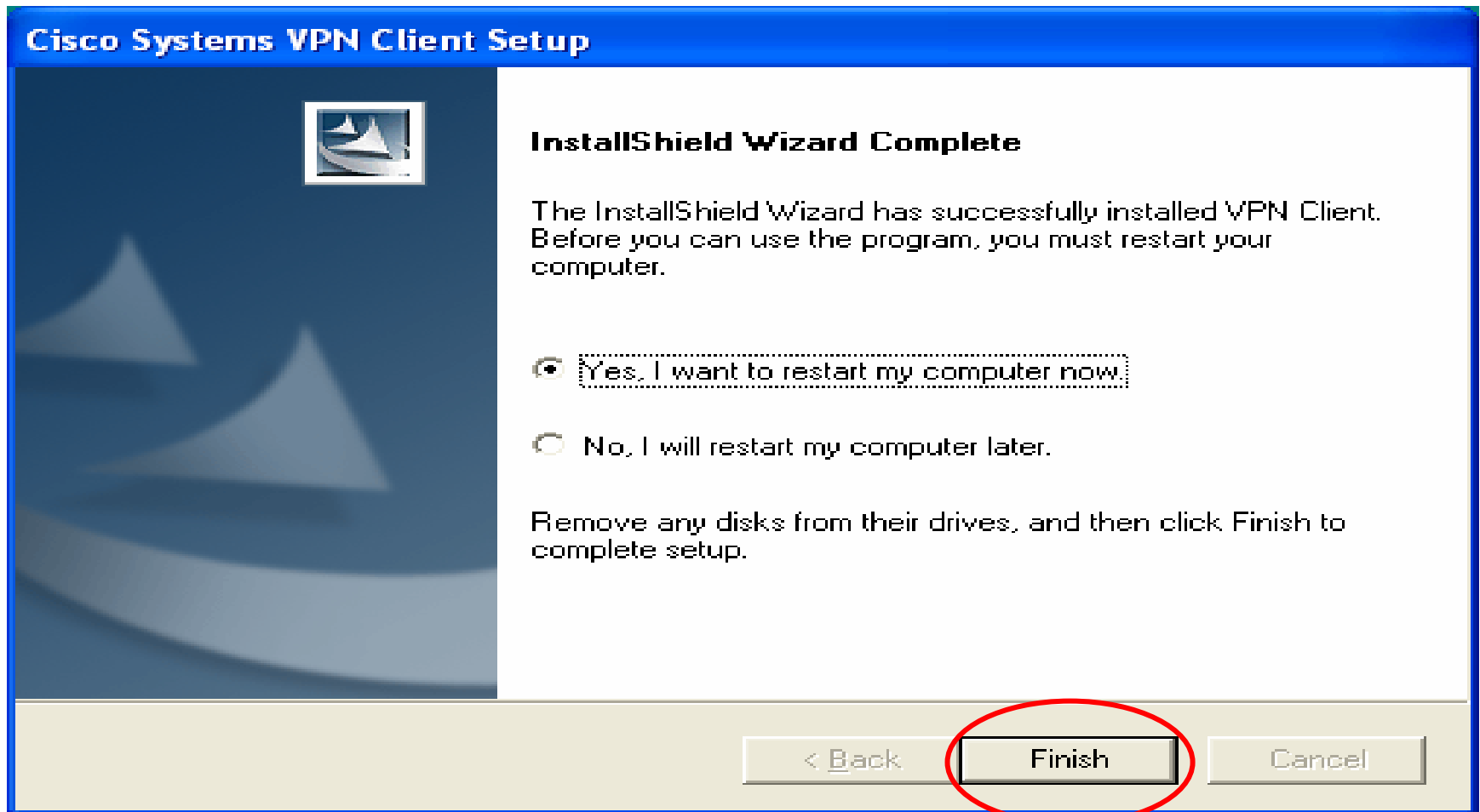
Select Next button



Wait for program installation process...



Click Finish to Restart your Computer

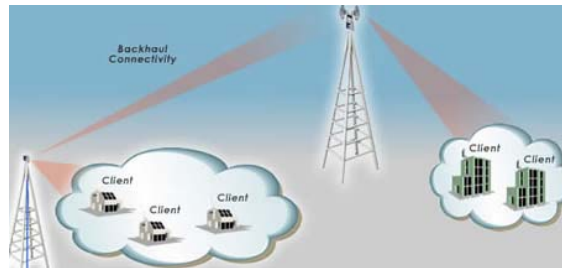


& connect to your Internet Service Provider (ISP)

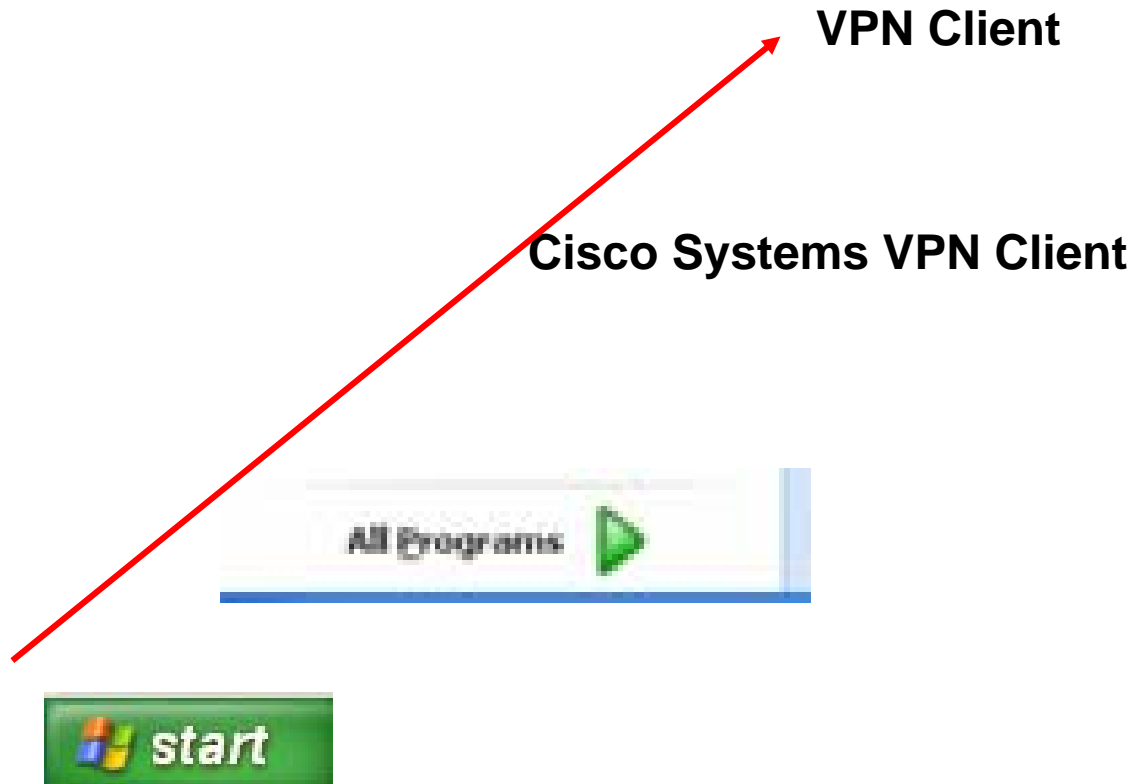
- 1. Restart your computer (on/off) button



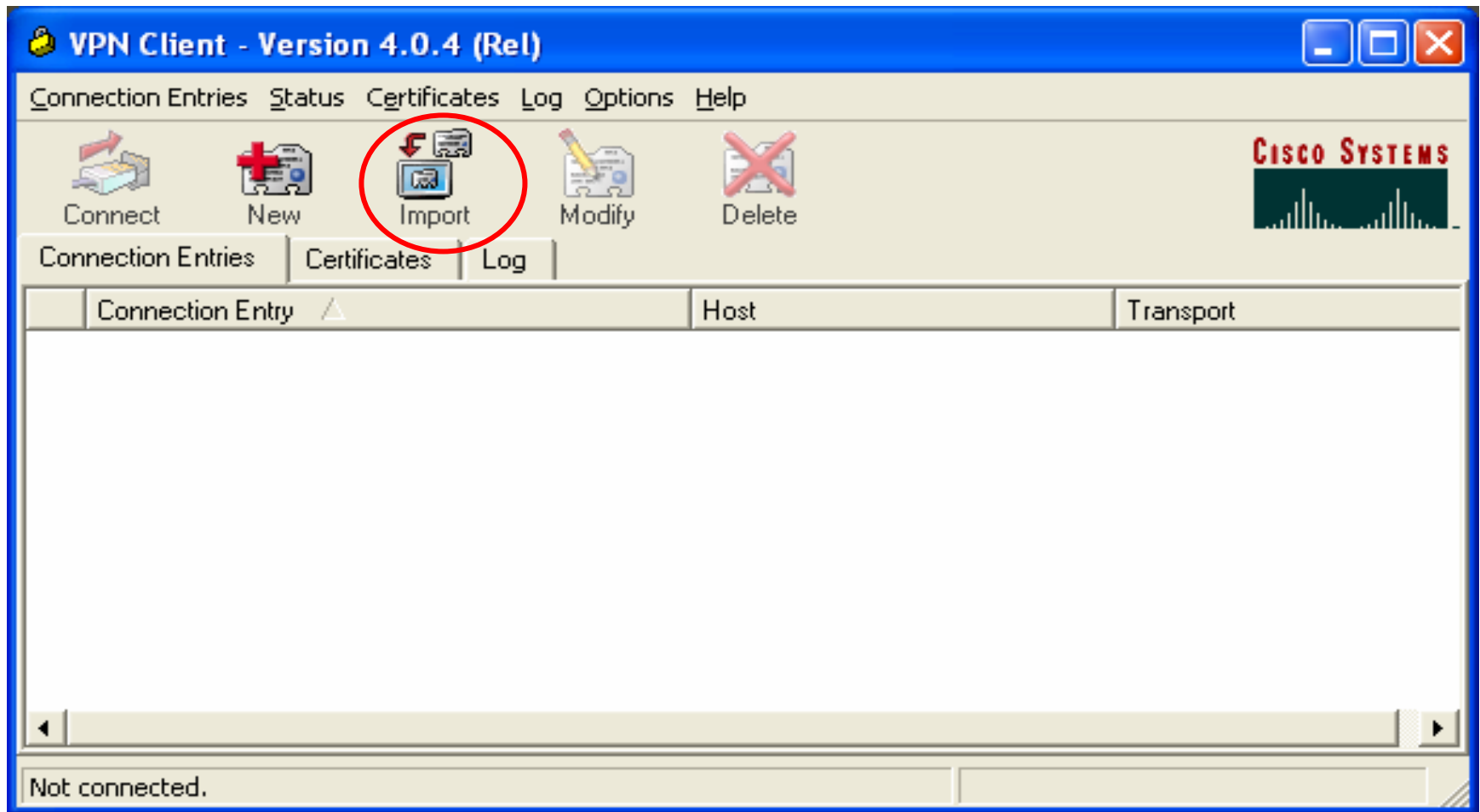
- 2. Connect to the Internet (your Internet Service Provider)



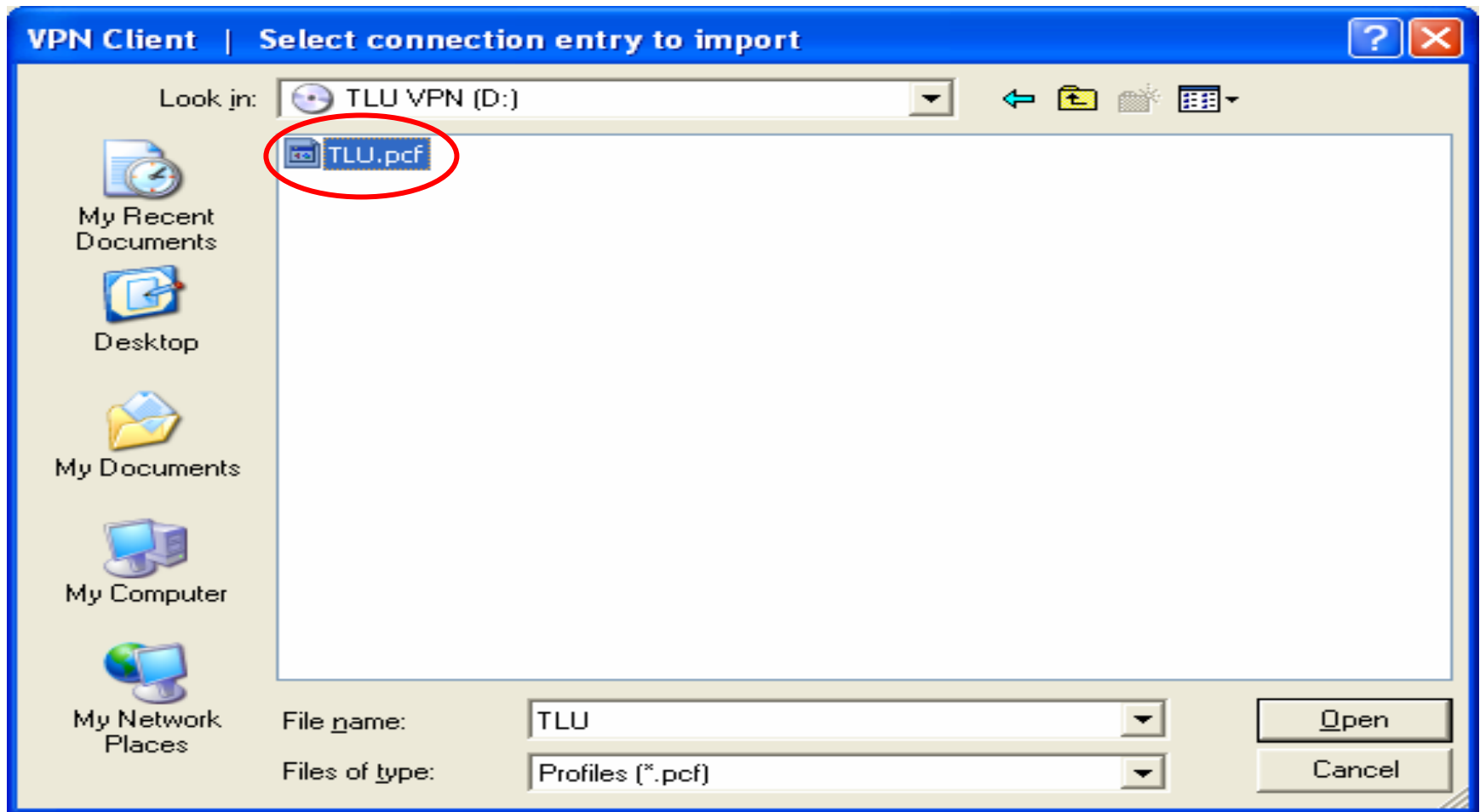
Select Start > All Program > Cisco Systems VPN Client > VPN Client



A VPN Client window opens. Click Import Icon



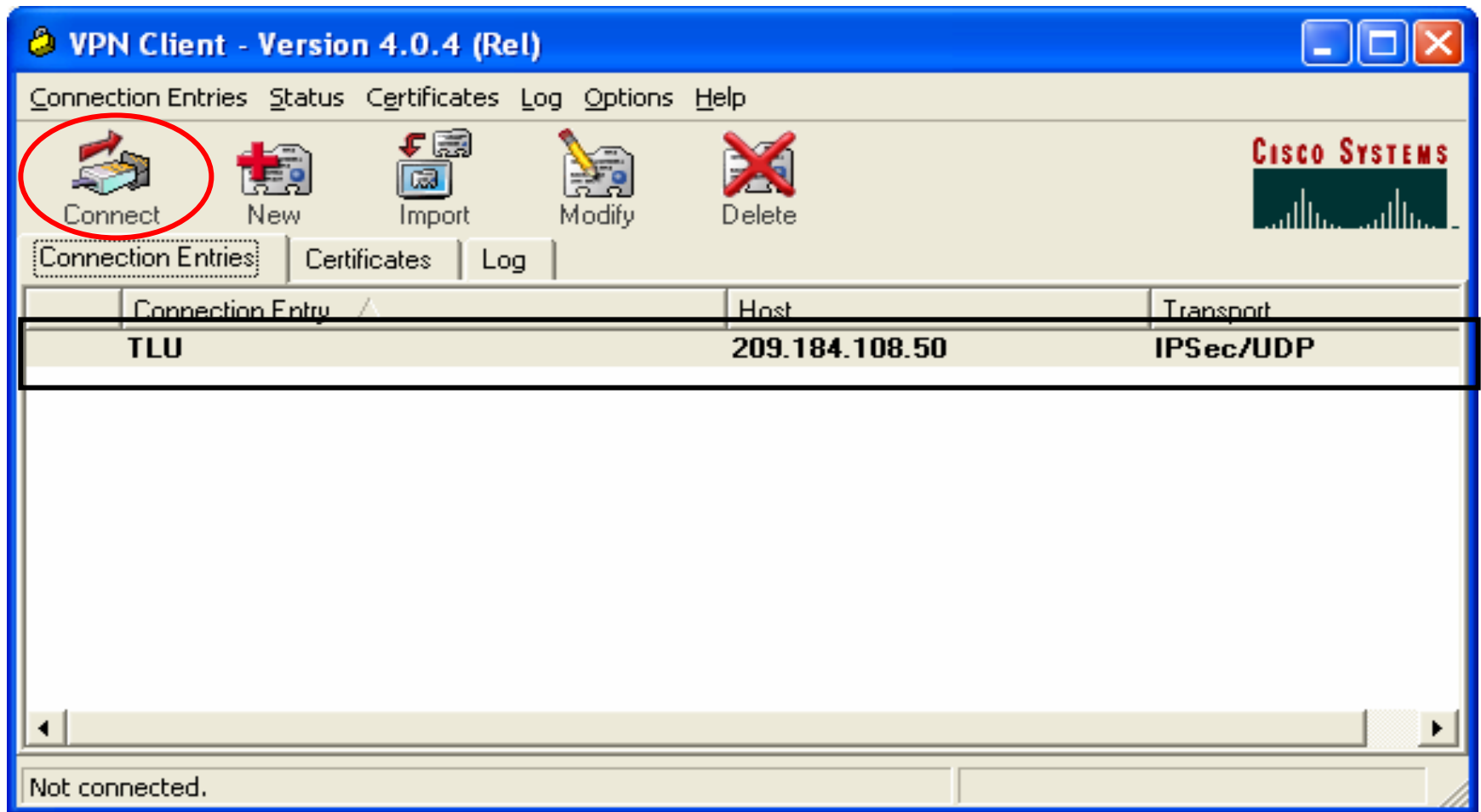
Navigate to you TLU VPN CD drive and Select 'TLU.pcf'...click **Open**



Click Ok



1. You are back to VPN Client Screen with TLU Information as seen below.
2. Click Connect

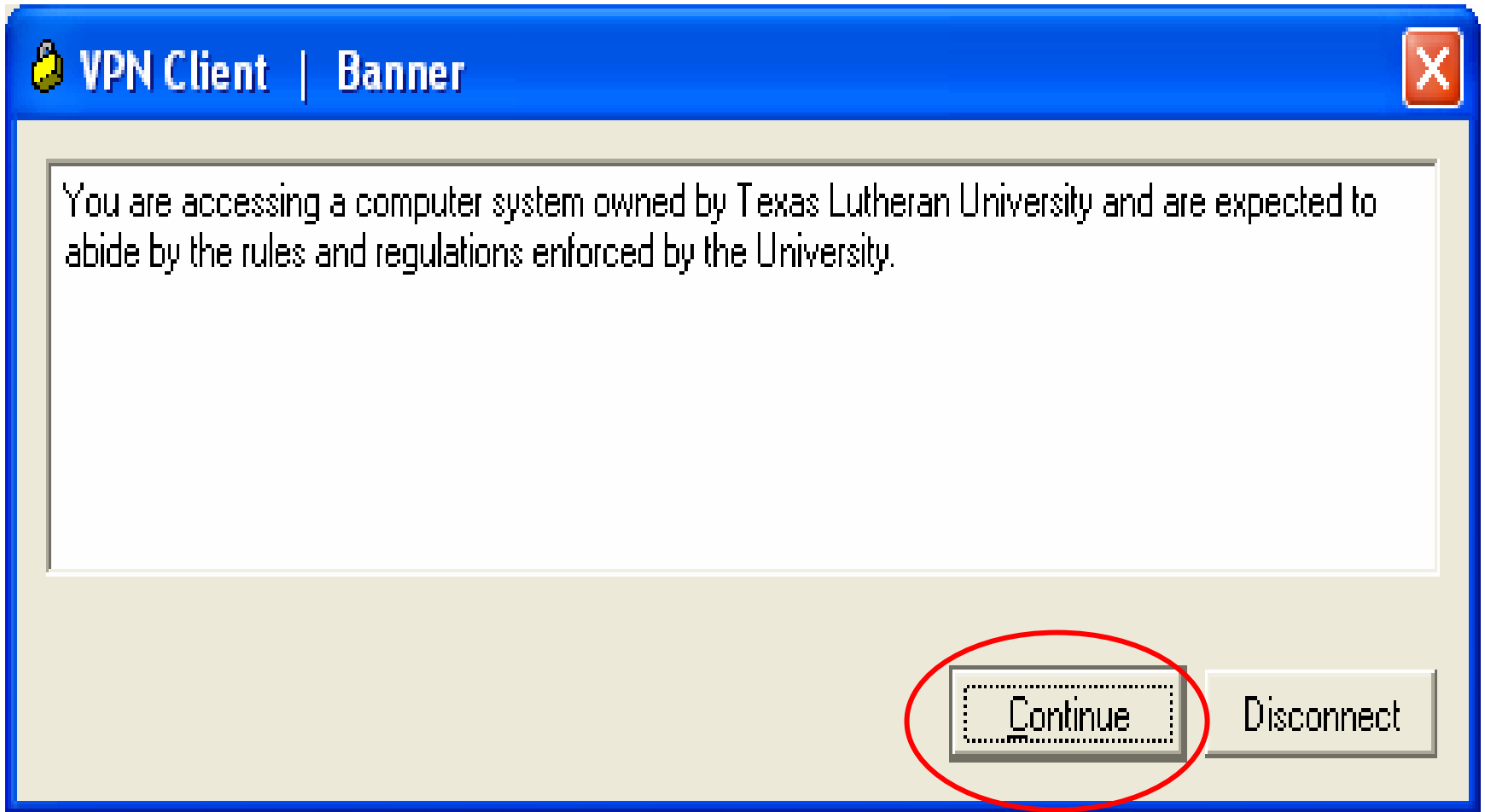


Type your TLU User name and Password

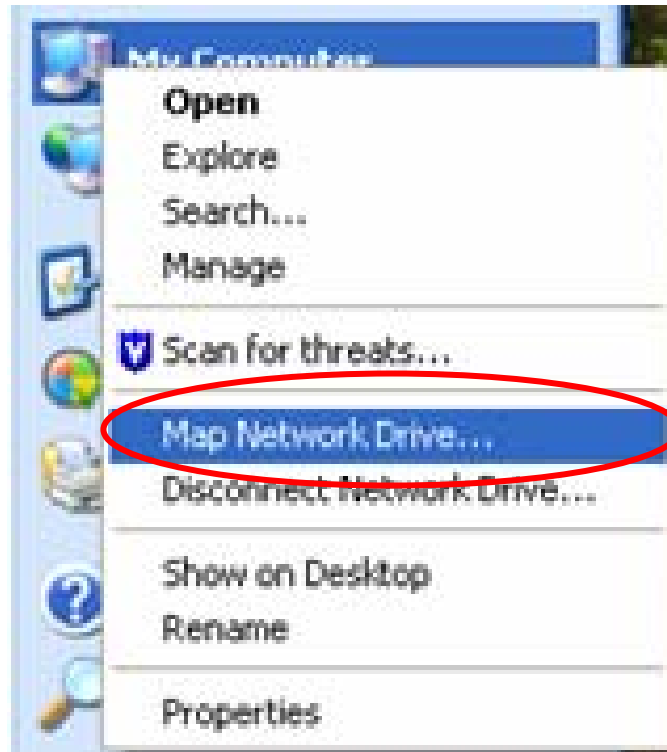


The image shows a Windows-style dialog box titled "VPN Client | User Authentication for 'TLU'". The dialog has a blue title bar with a yellow padlock icon on the left and a red close button (X) on the right. The main area is light beige and contains the text "Enter Username and Password." at the top. Below this is the Cisco Systems logo, which includes the text "CISCO SYSTEMS" in red and a green bar chart below it. To the right of the logo are two input fields: "Username:" with the text "pmuser" and "Password:" which is empty. A red oval highlights both input fields. At the bottom of the dialog are two buttons: "OK" and "Cancel".

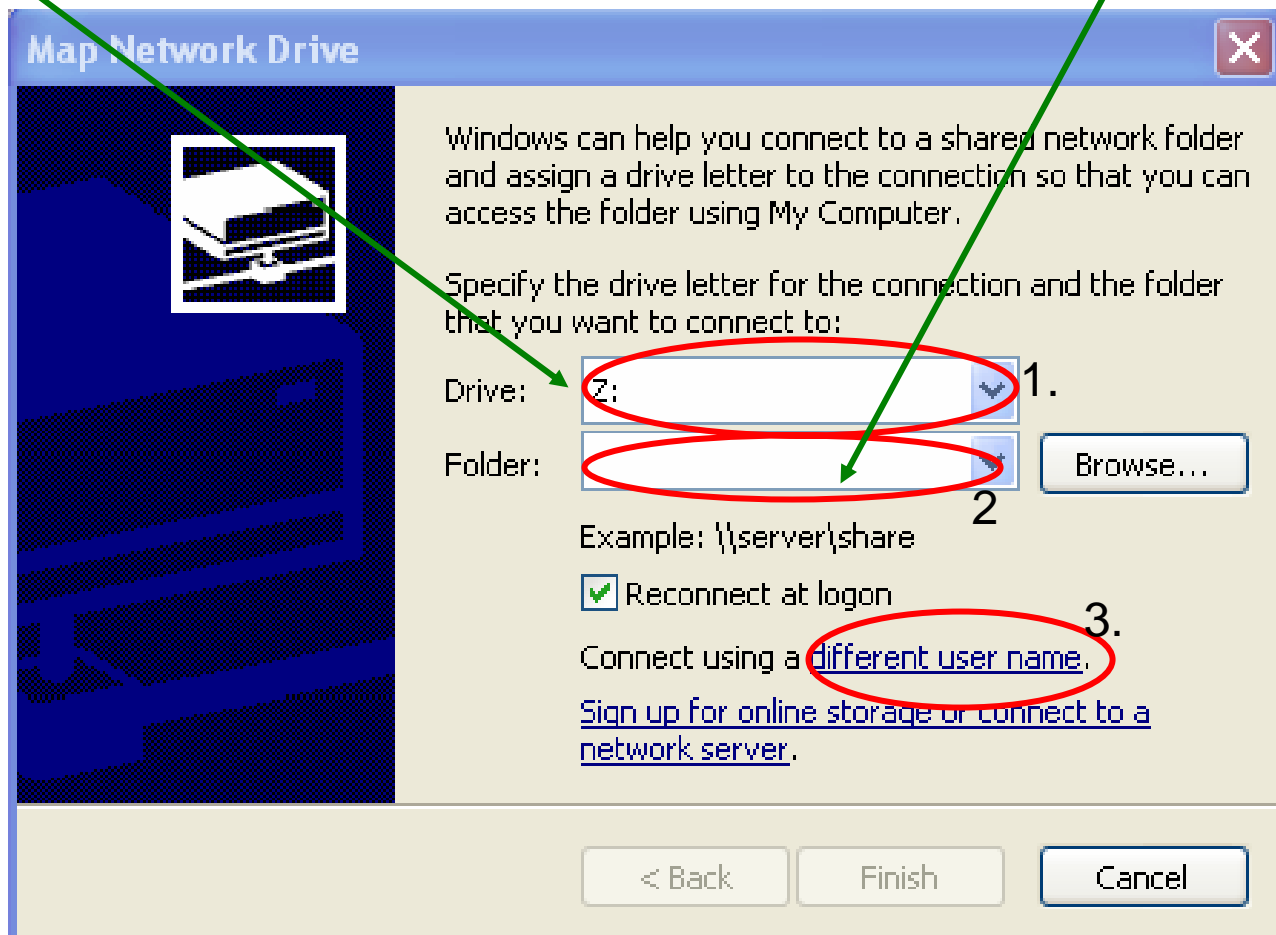
Click Continue



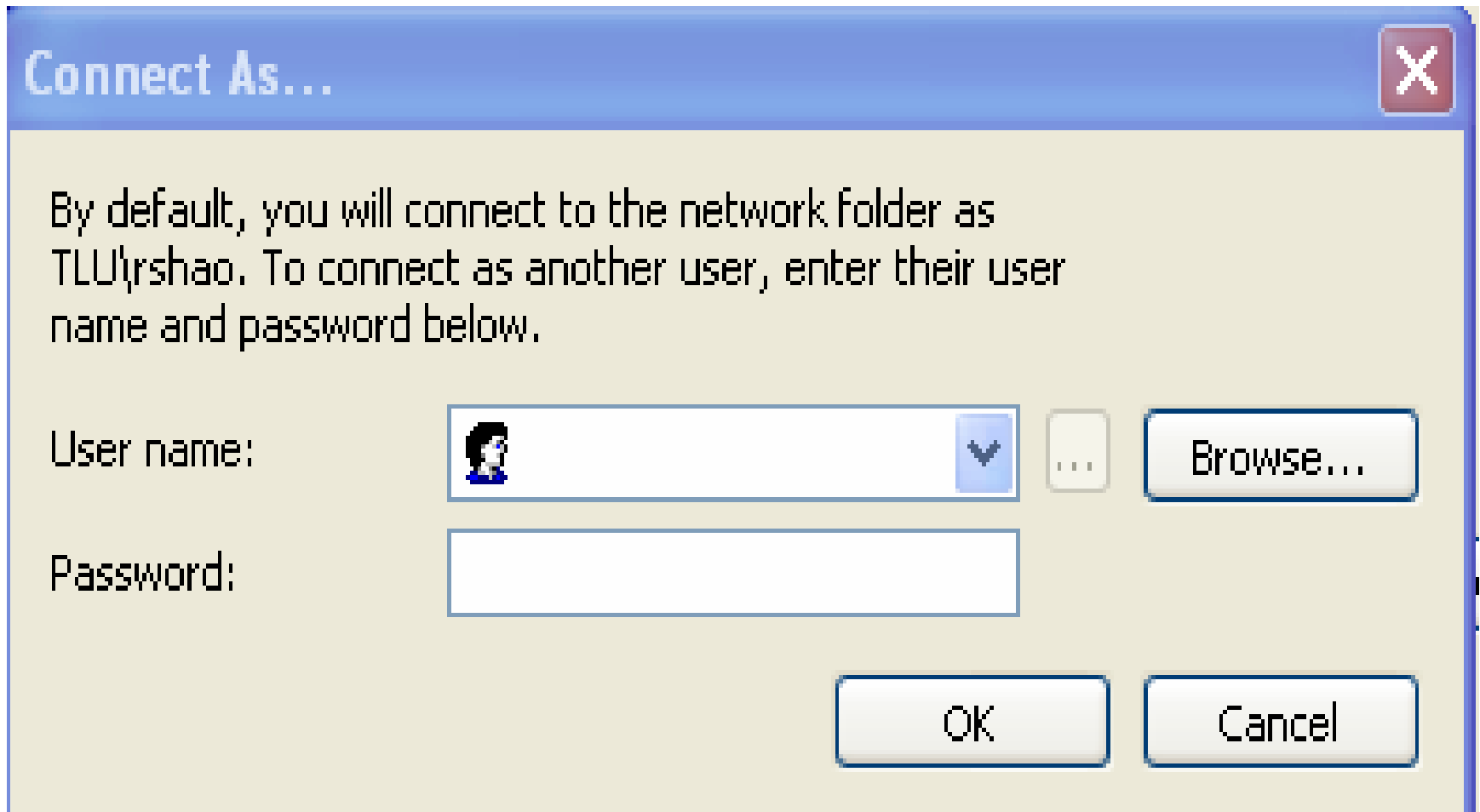
To Connect to you 'Y' drive > Right Click My Computer Icon > Select 'Map Network Drive'



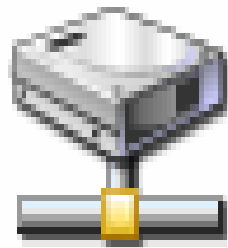
(1) Select Drive letter 'Y' (2) Enter the following: [\\tlufs\your user name](#)
e.g. [\\tlufs\rshao](#) > (3) Select 'Connect using a different user name link



Type: tl\user name.... and password as shown below > OK



You now have access to your 'Y' Drive from off-campus



rshao on 'Samba Server 3.0.22
(tlufs)' (Y:)