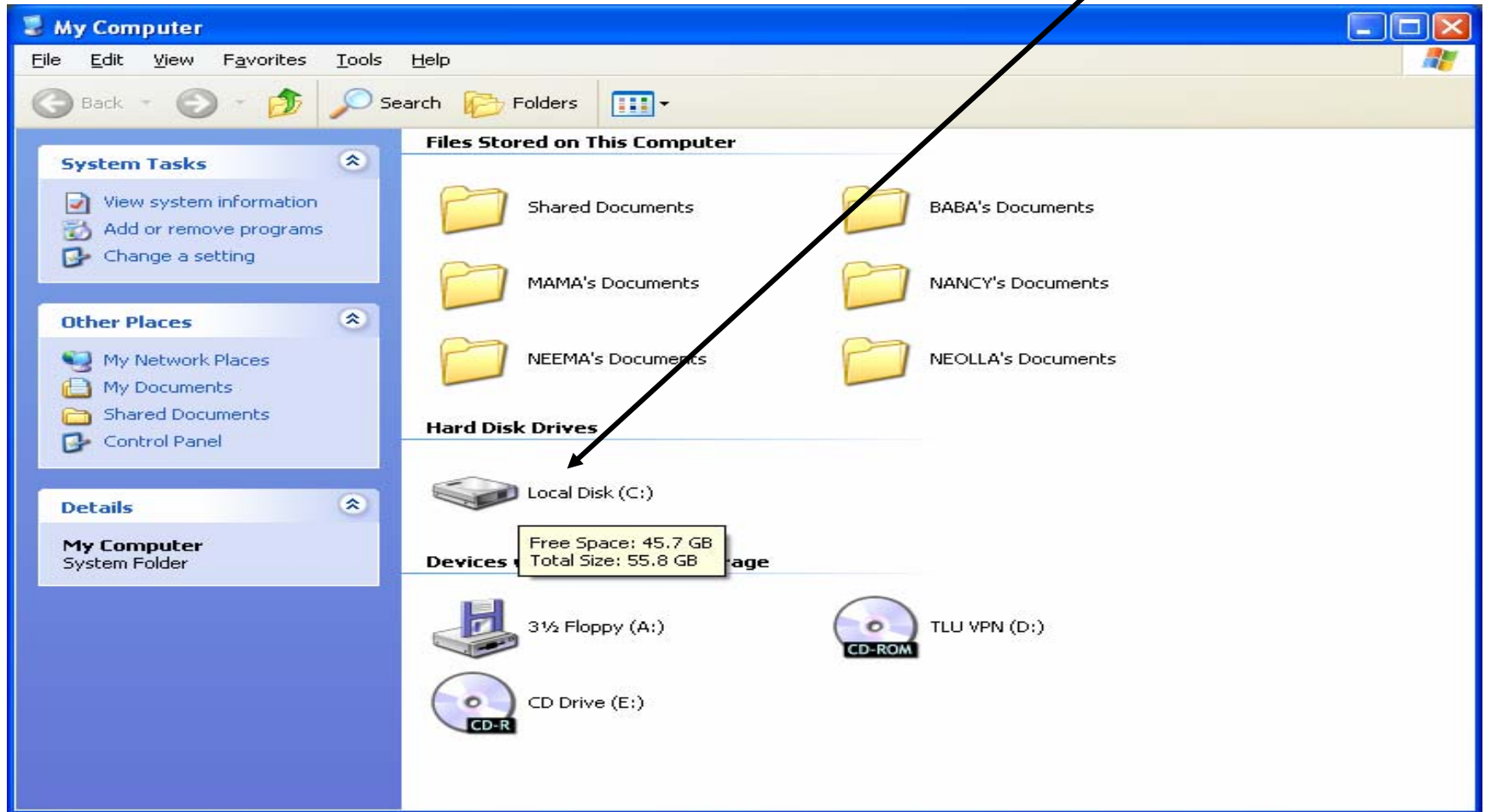
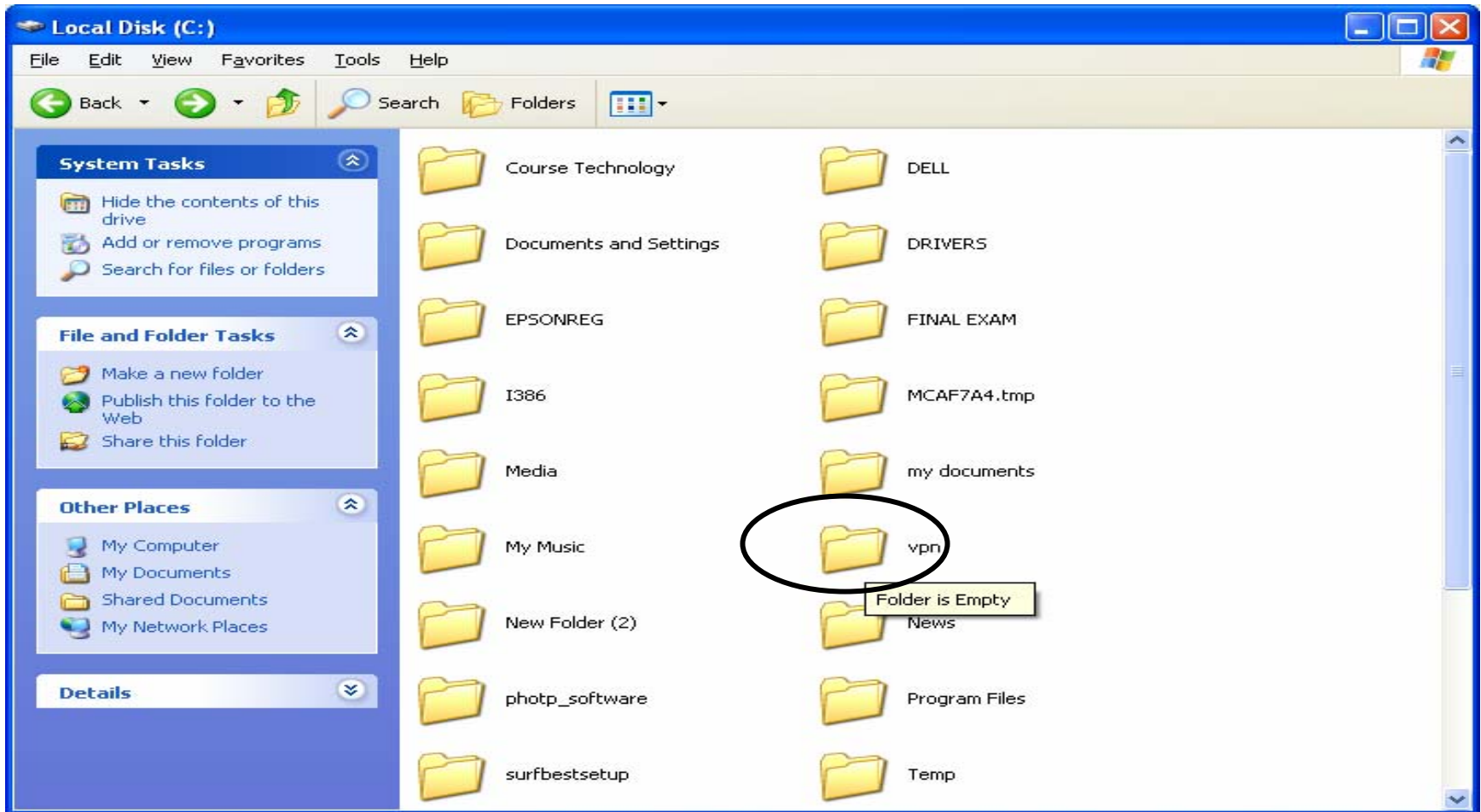


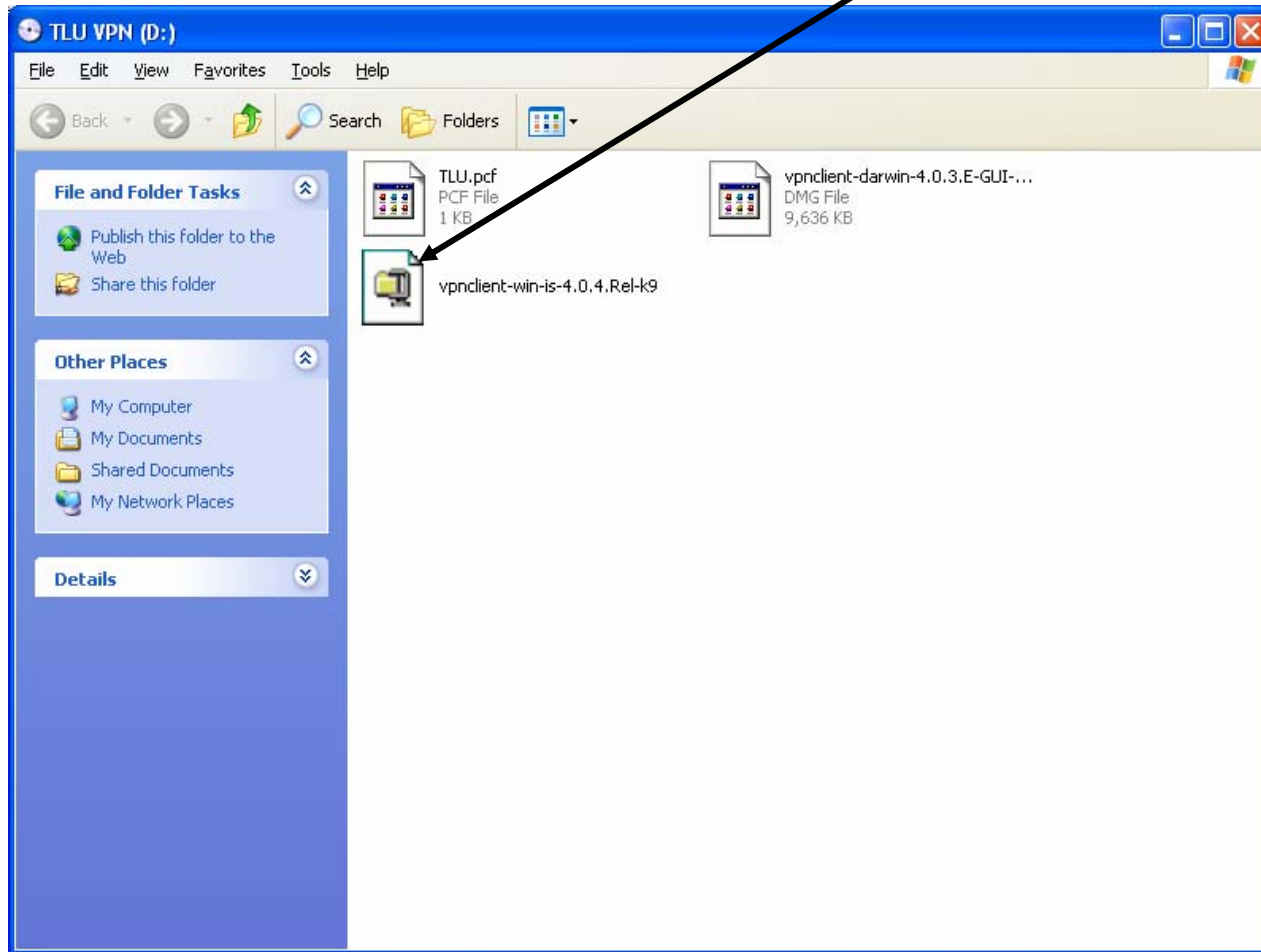
Double click My Computer Icon and Open 'C' Drive



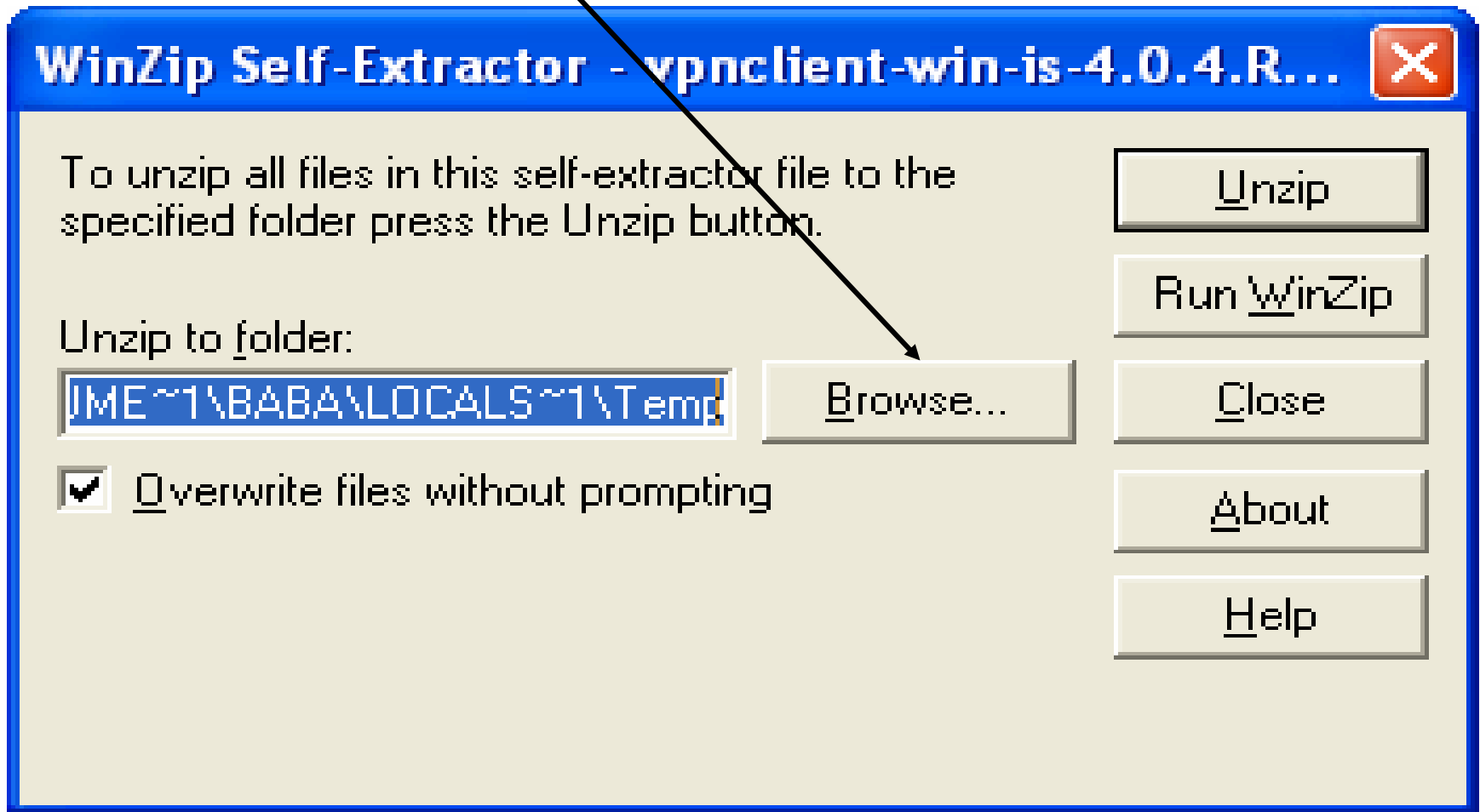
Create a New Folder and Name it 'VPN'



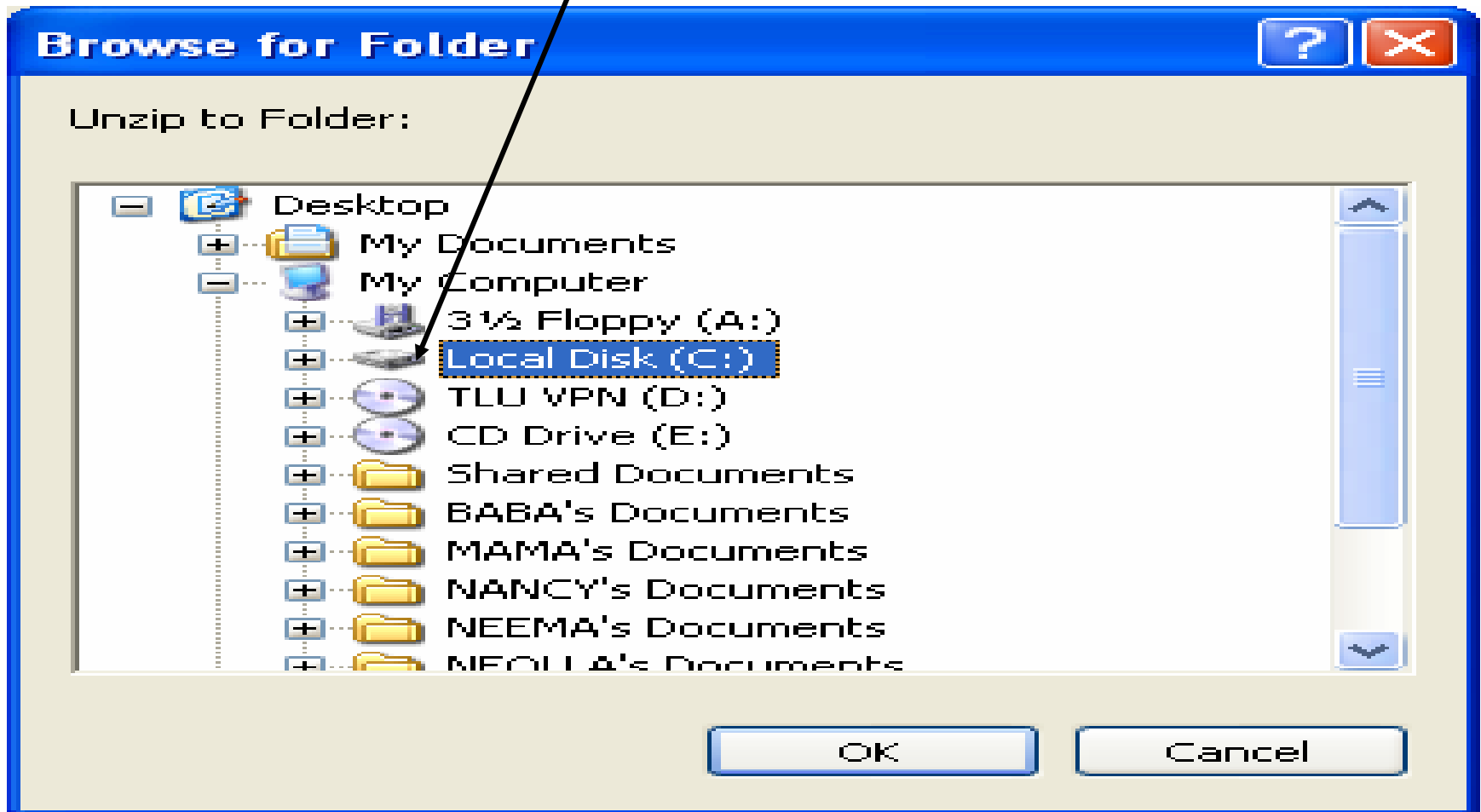
Insert TLU VPN CD, and Double Click Zipped Icon



Click Browse to Locate a new VPN folder created



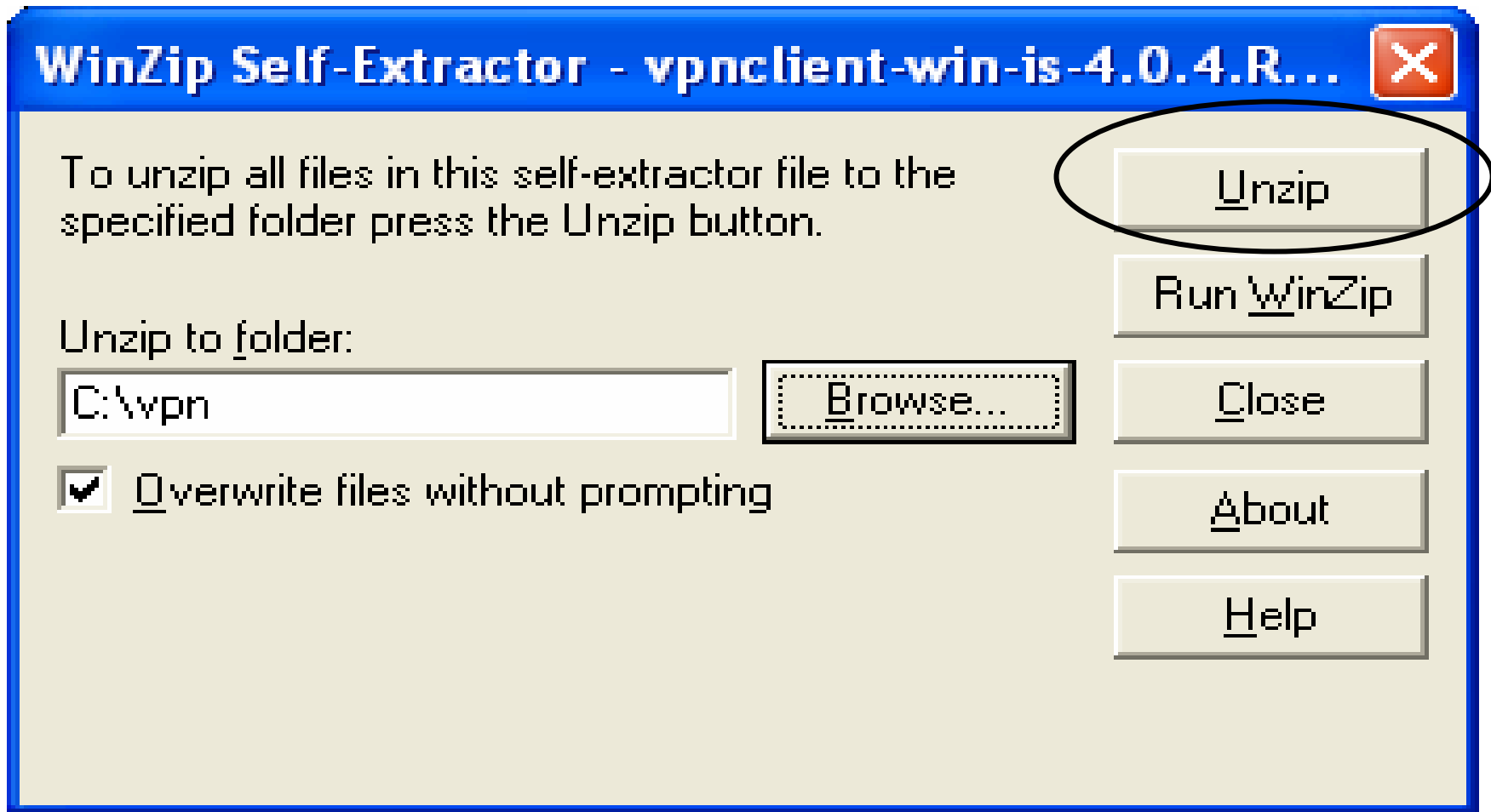
Double Click 'C' drive to locate 'VPN folder
(Your letter drive may be different)



Select VPN folder and Click Ok.



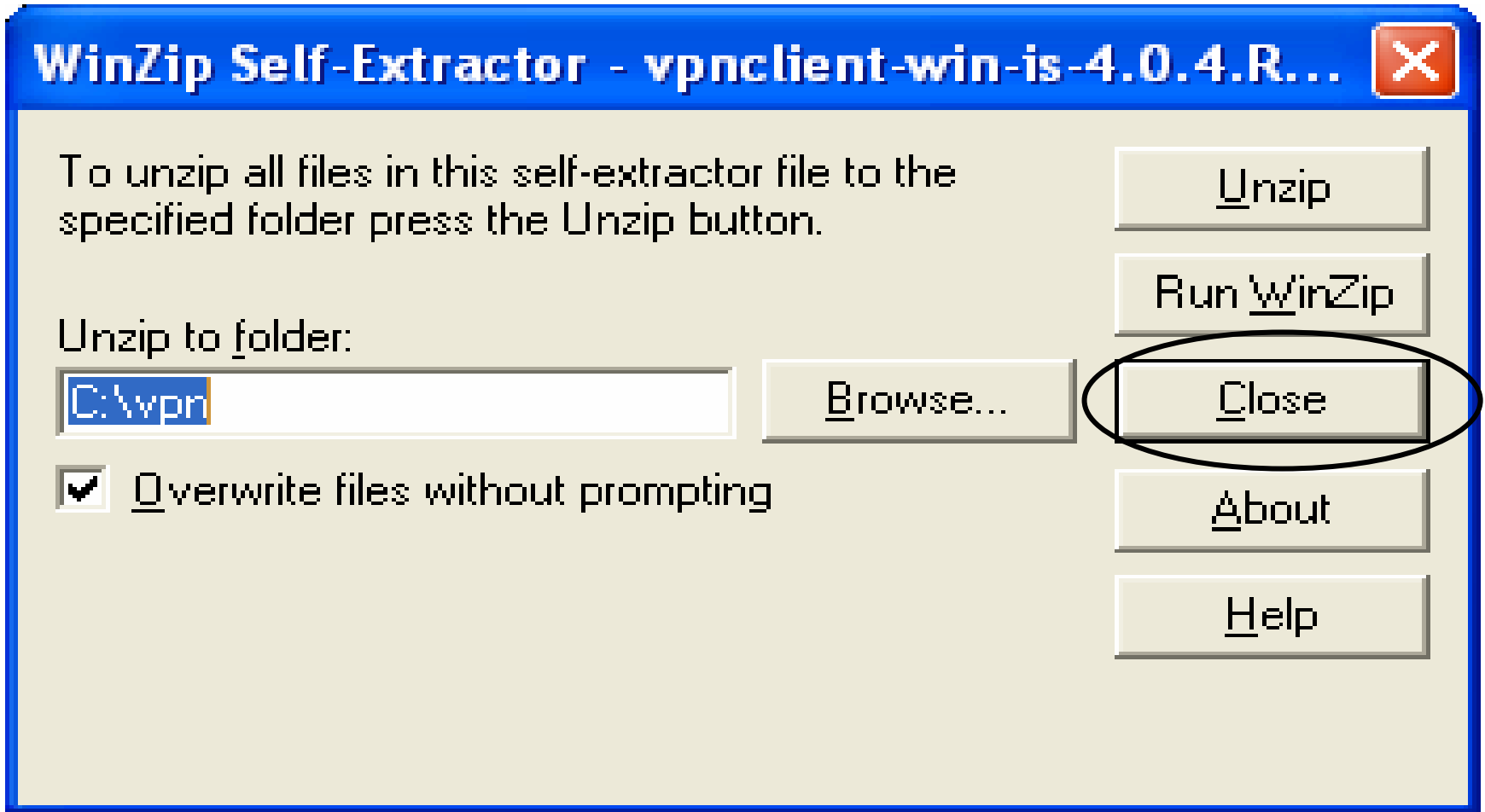
Select Unzip button



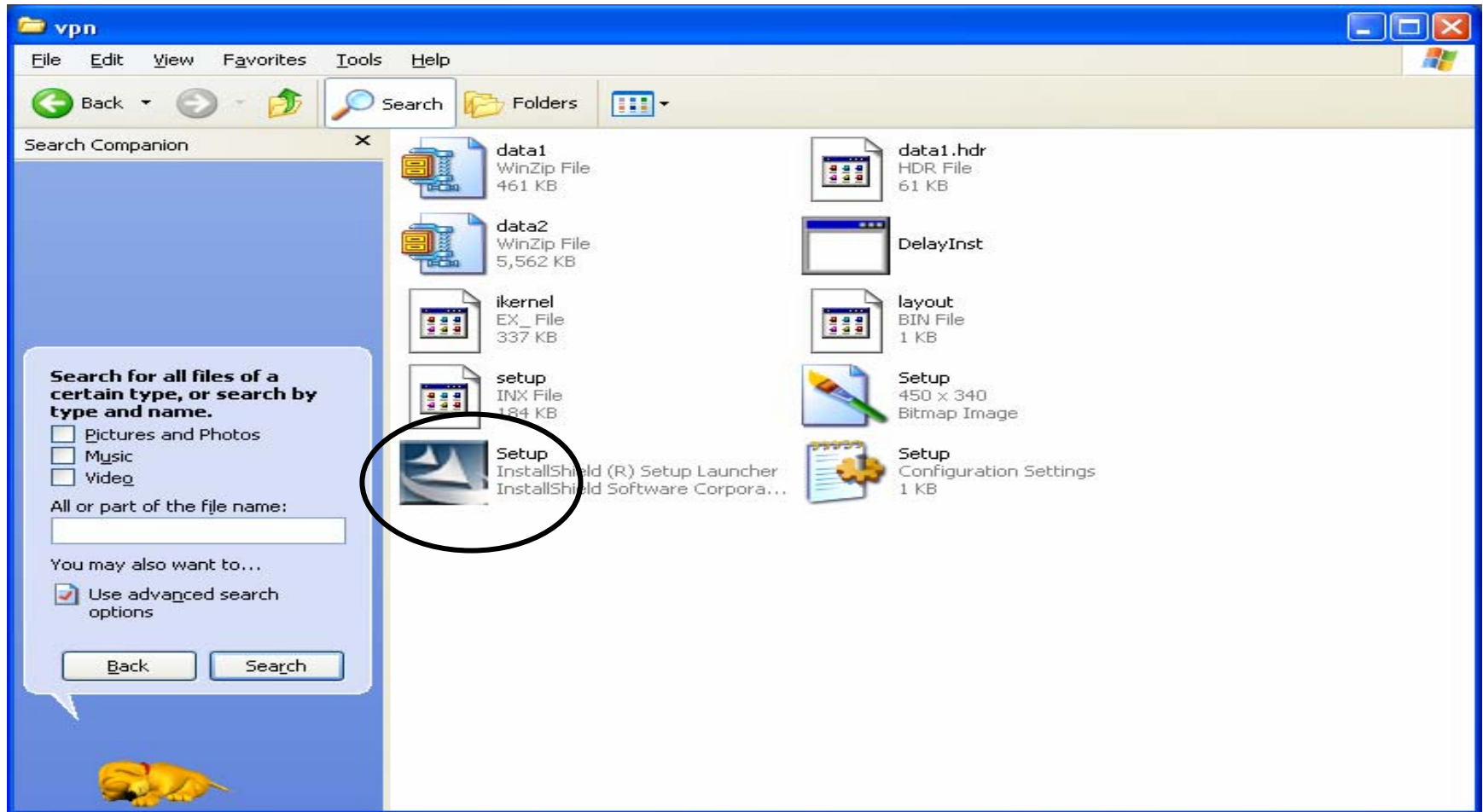
Click Ok



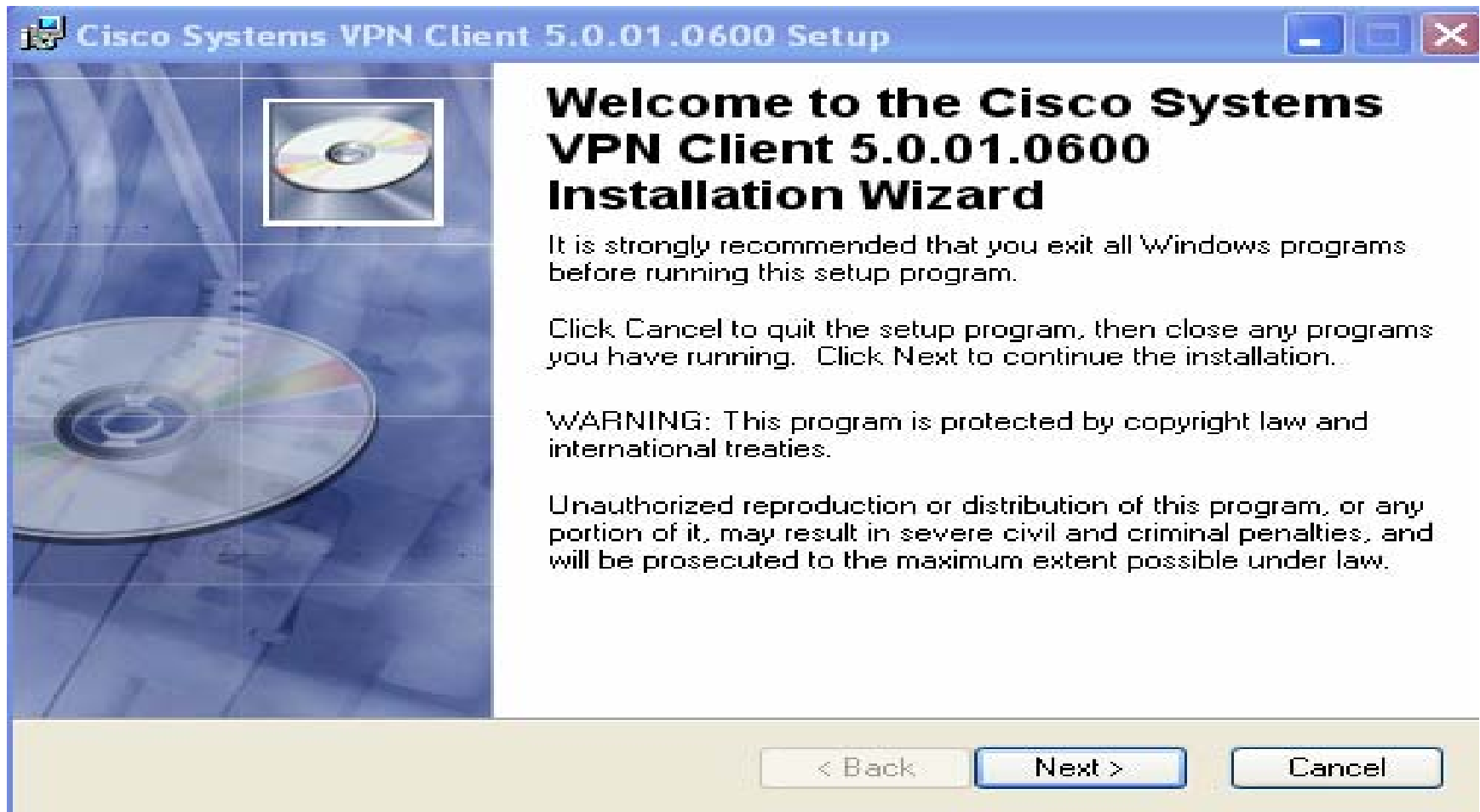
Click Close



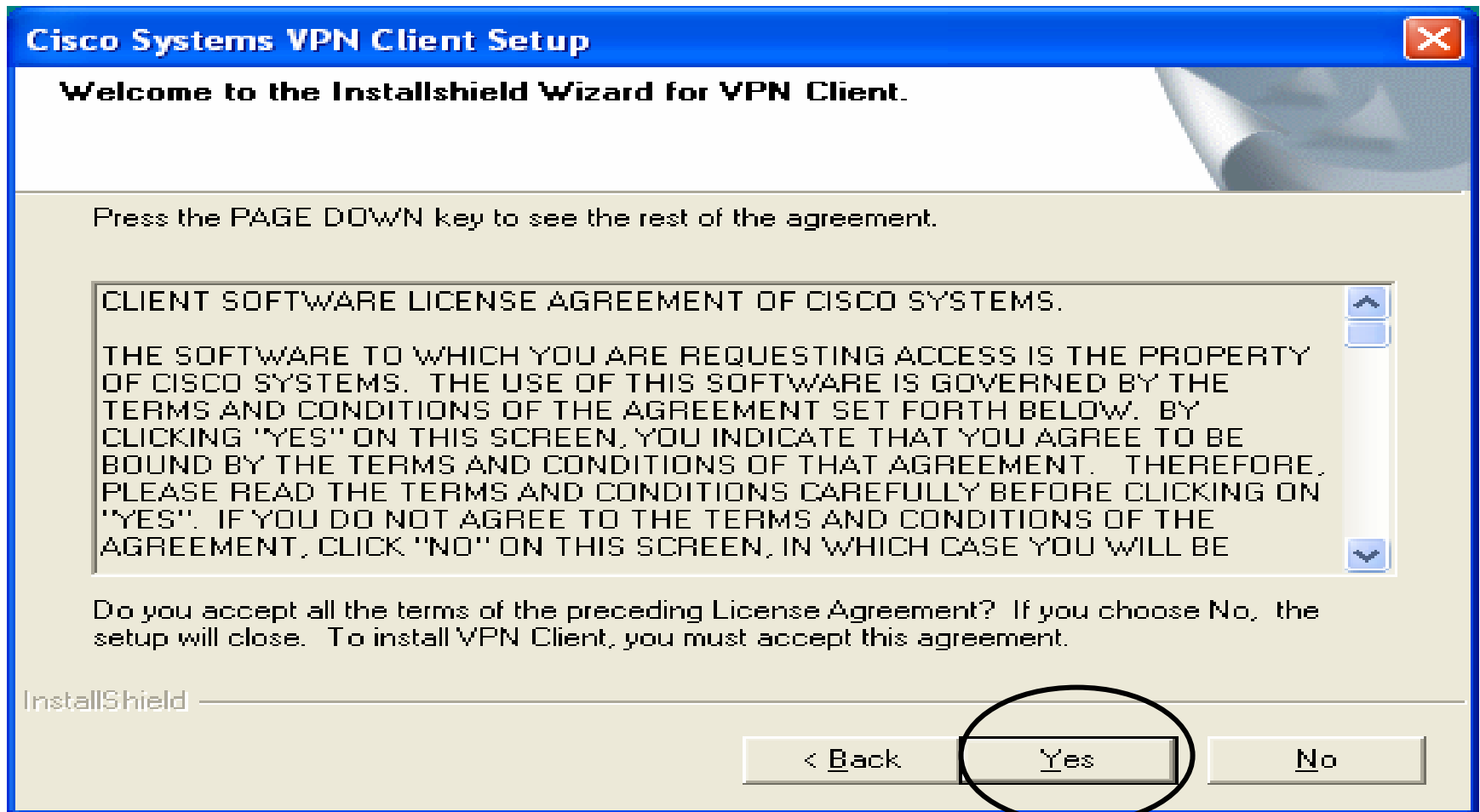
Go to your New VPN Folder and Double click Setup Icon



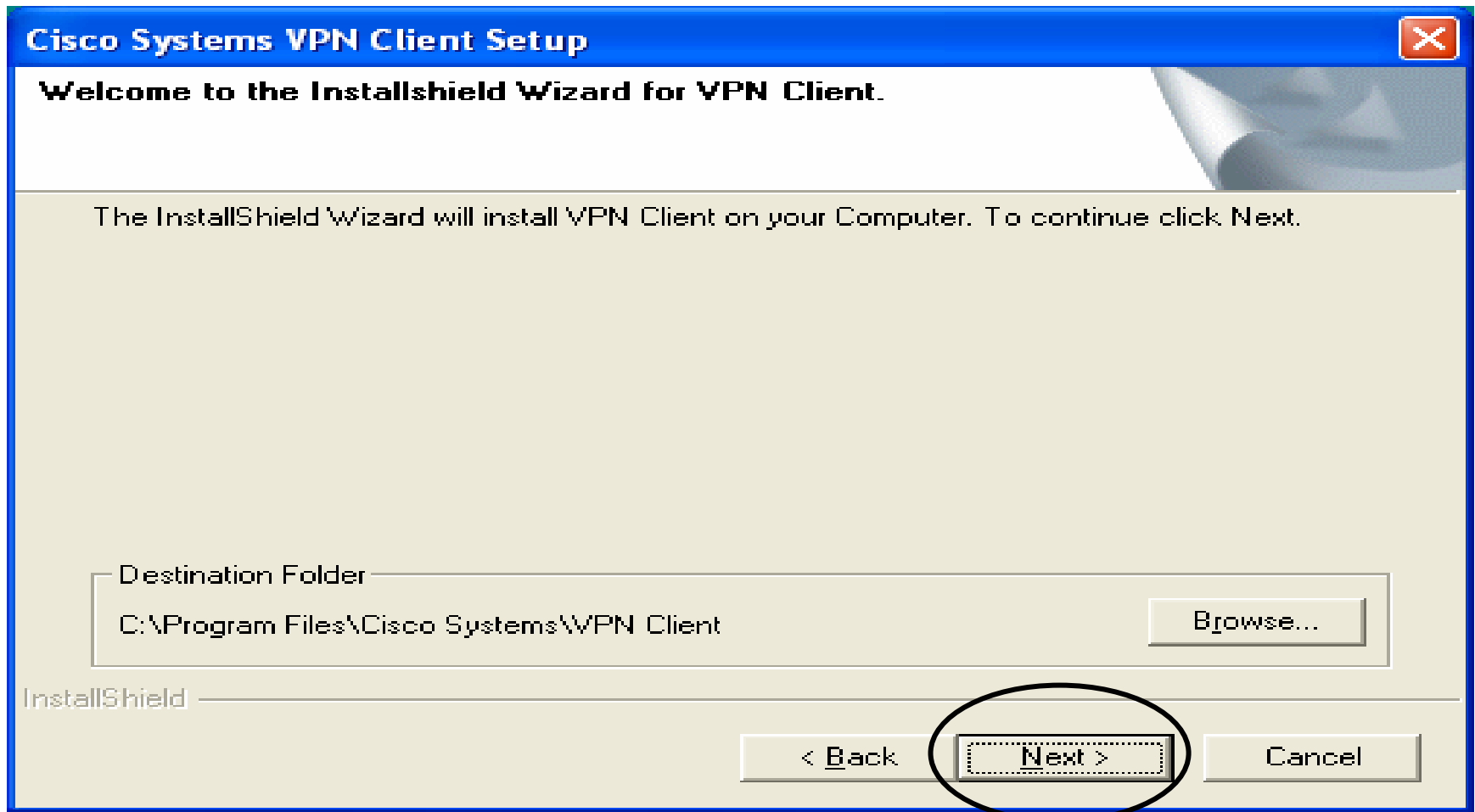
Click Next button



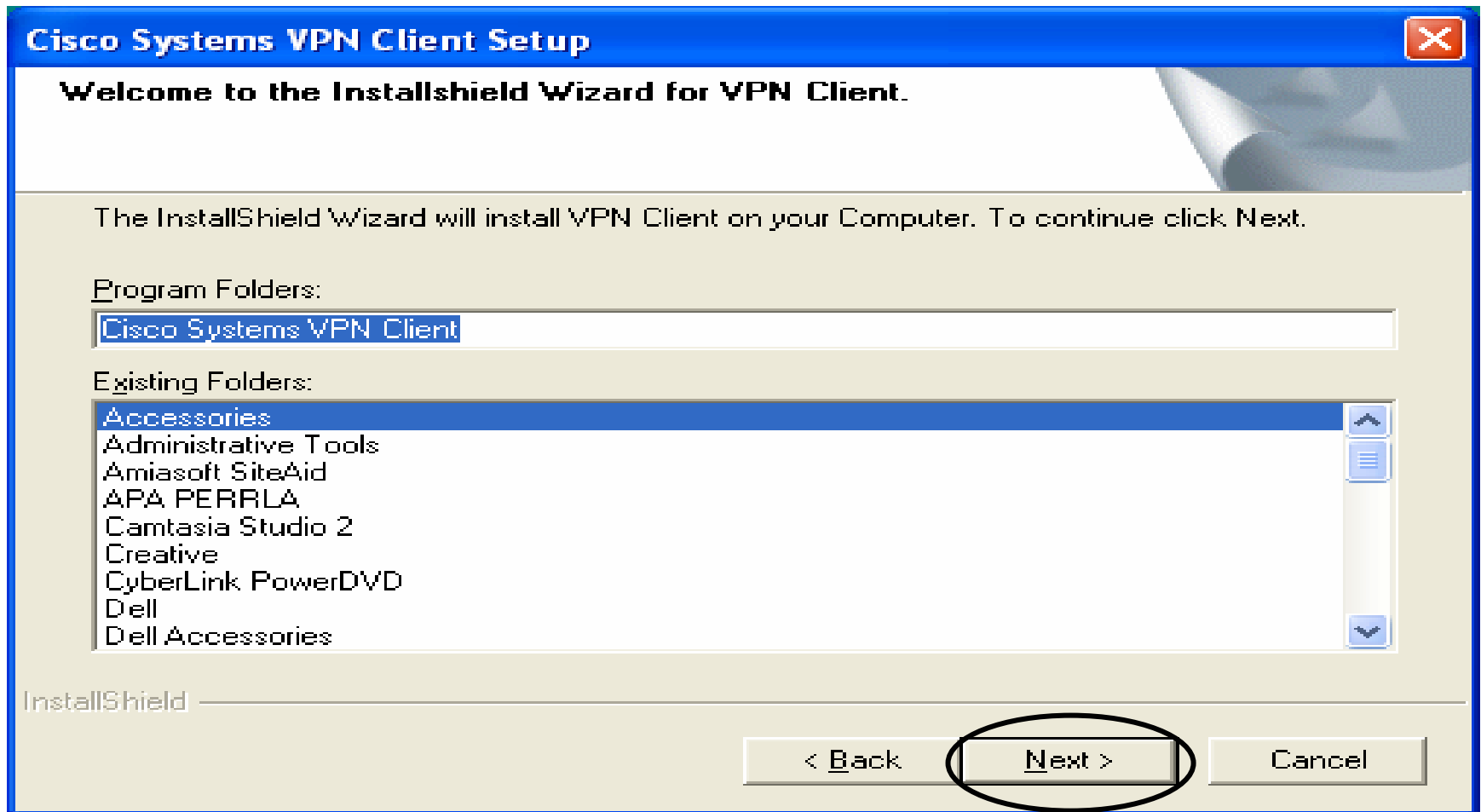
Select Yes button



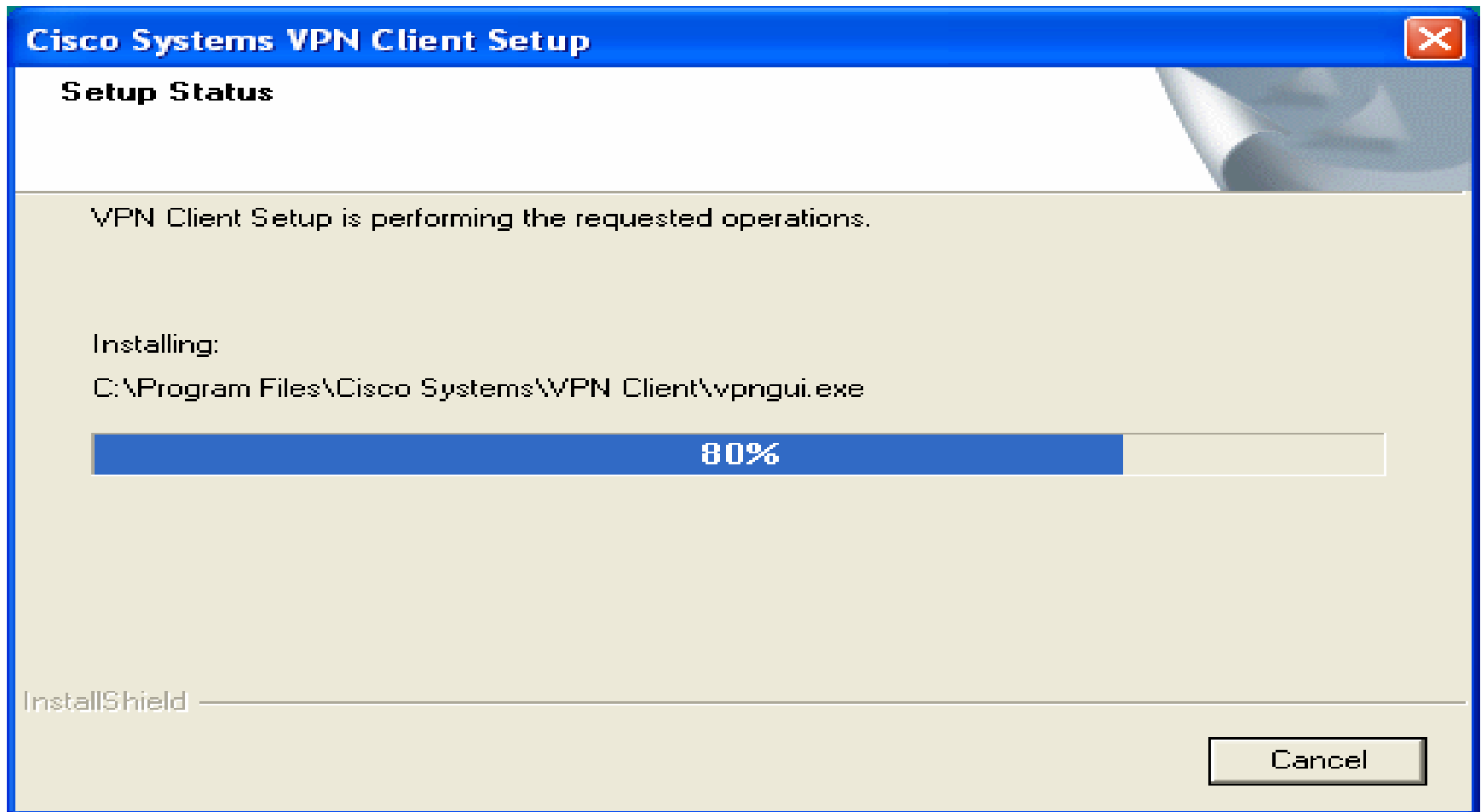
Select Next button



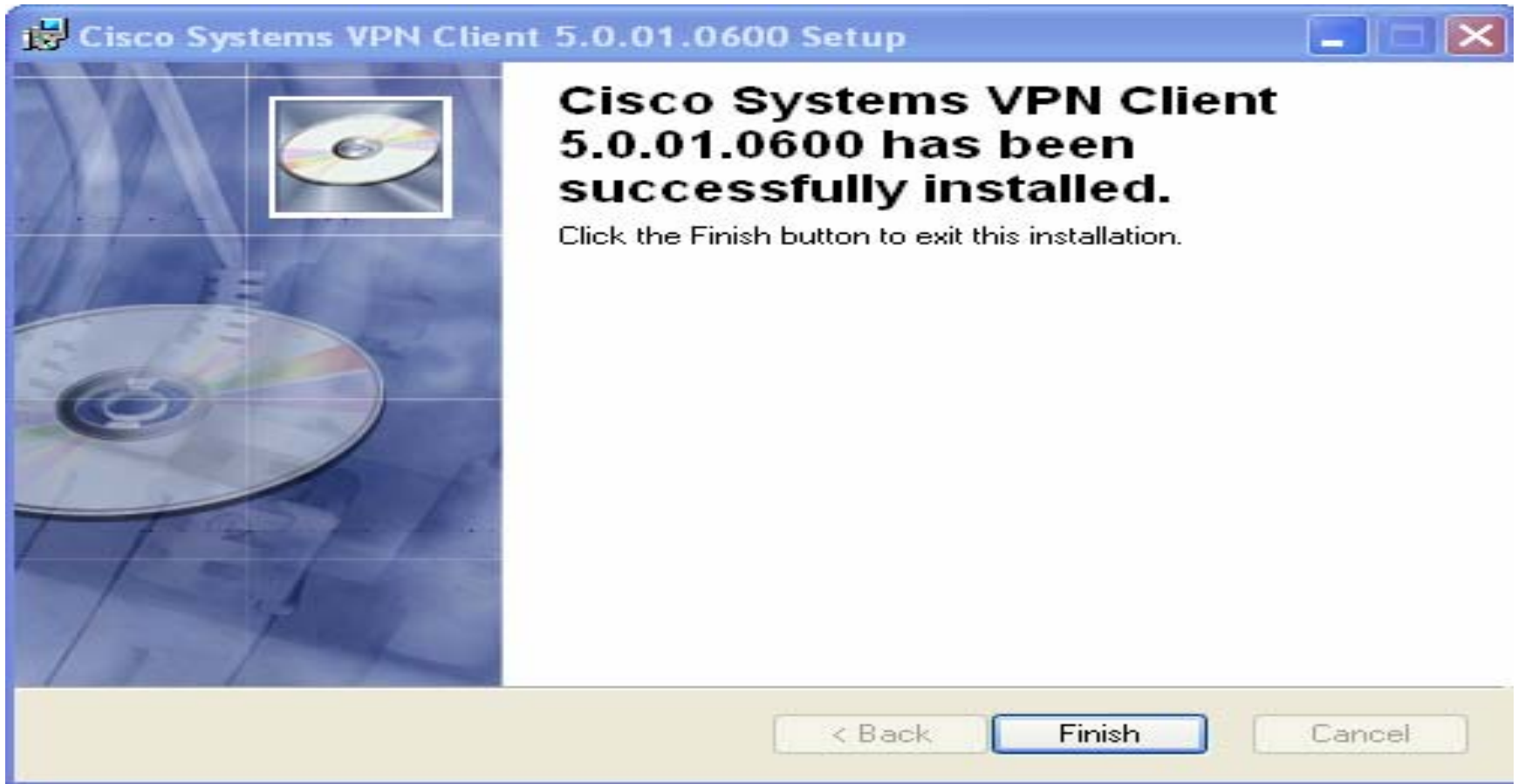
Select Next button



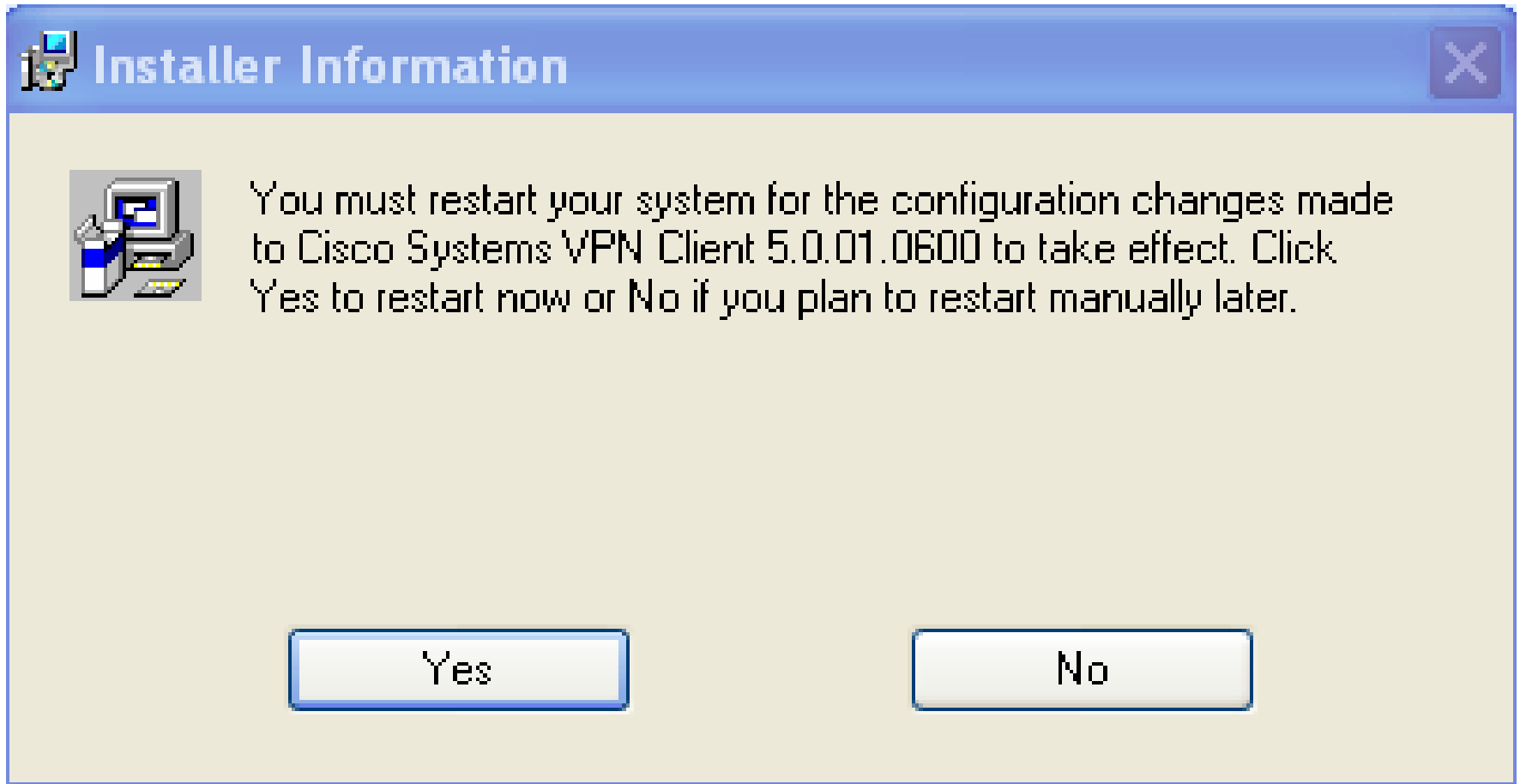
Wait for program installation process...



Click Finish button

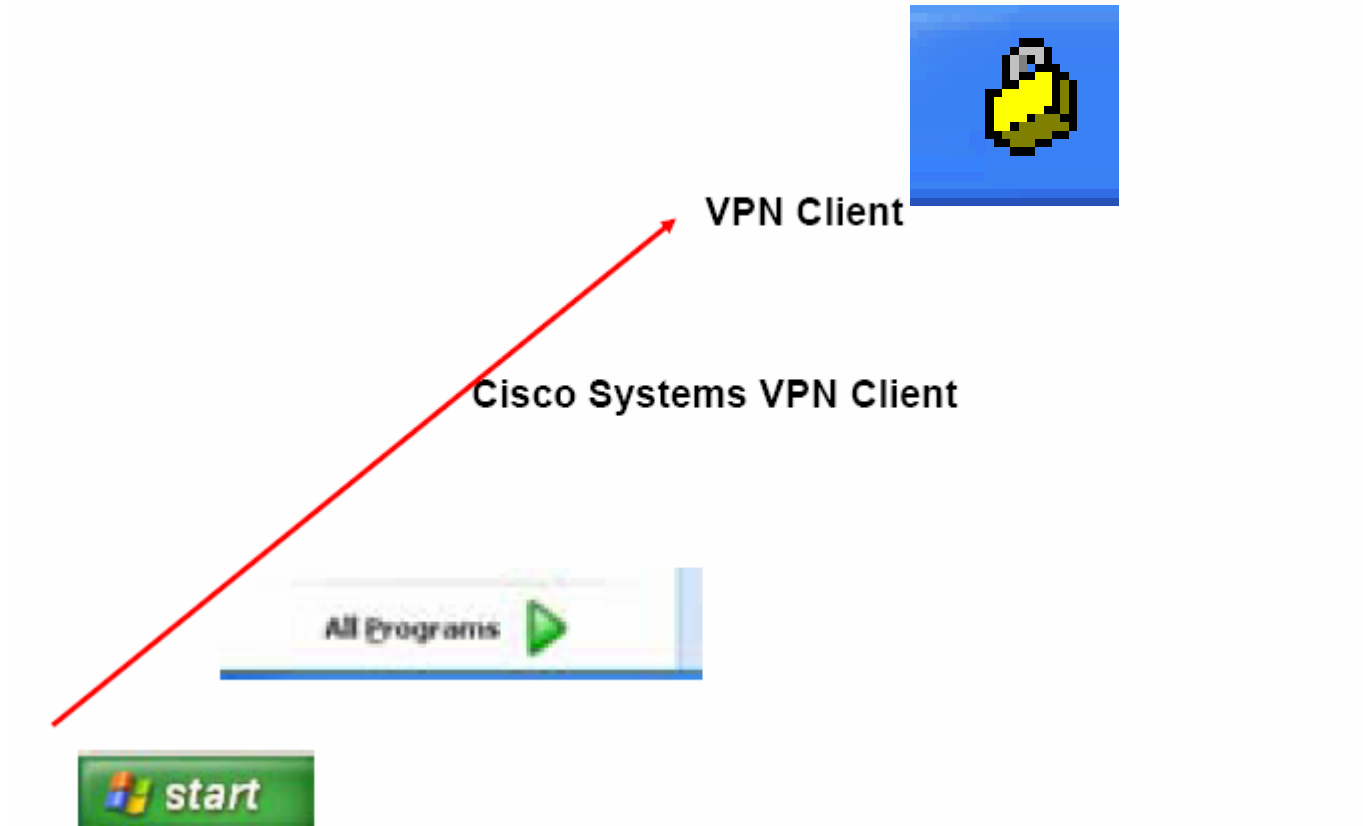


Click Yes to Restart your Computer

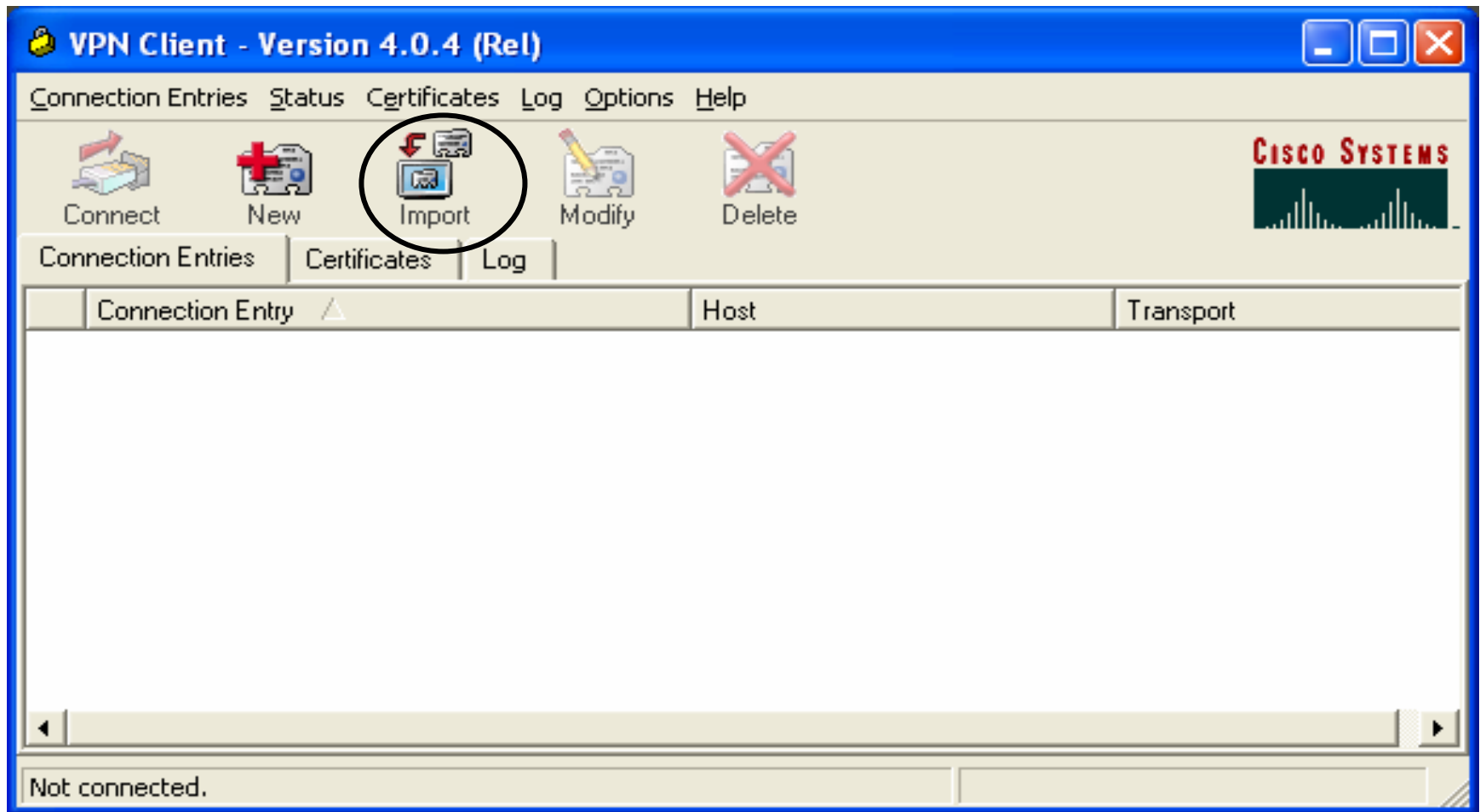


Open installed VPN program

Select Start > All Program > Cisco Systems VPN Client > VPN Client



Click Import Icon

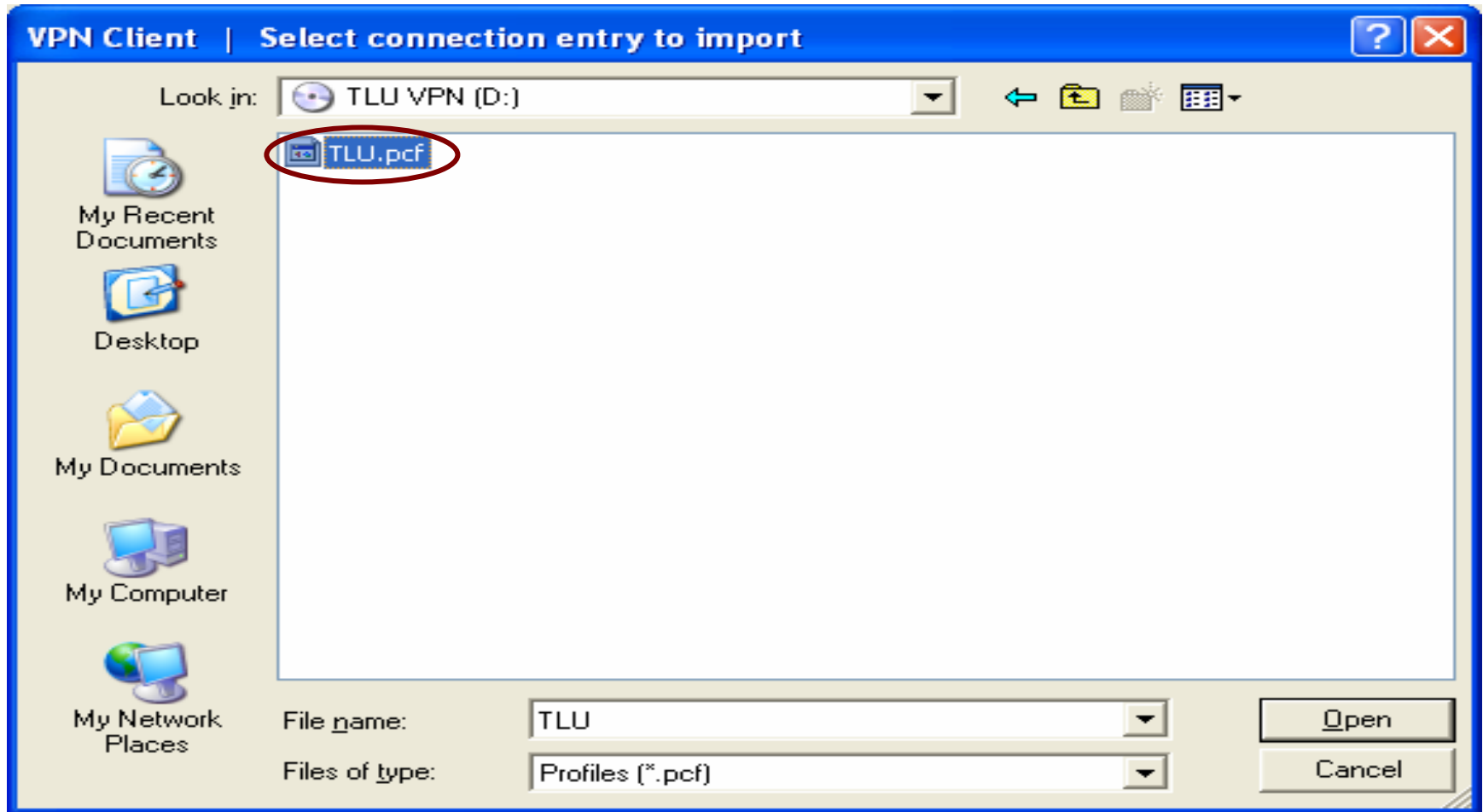


Locate you TLU VPN CD and Select 'TLU.pcf' file

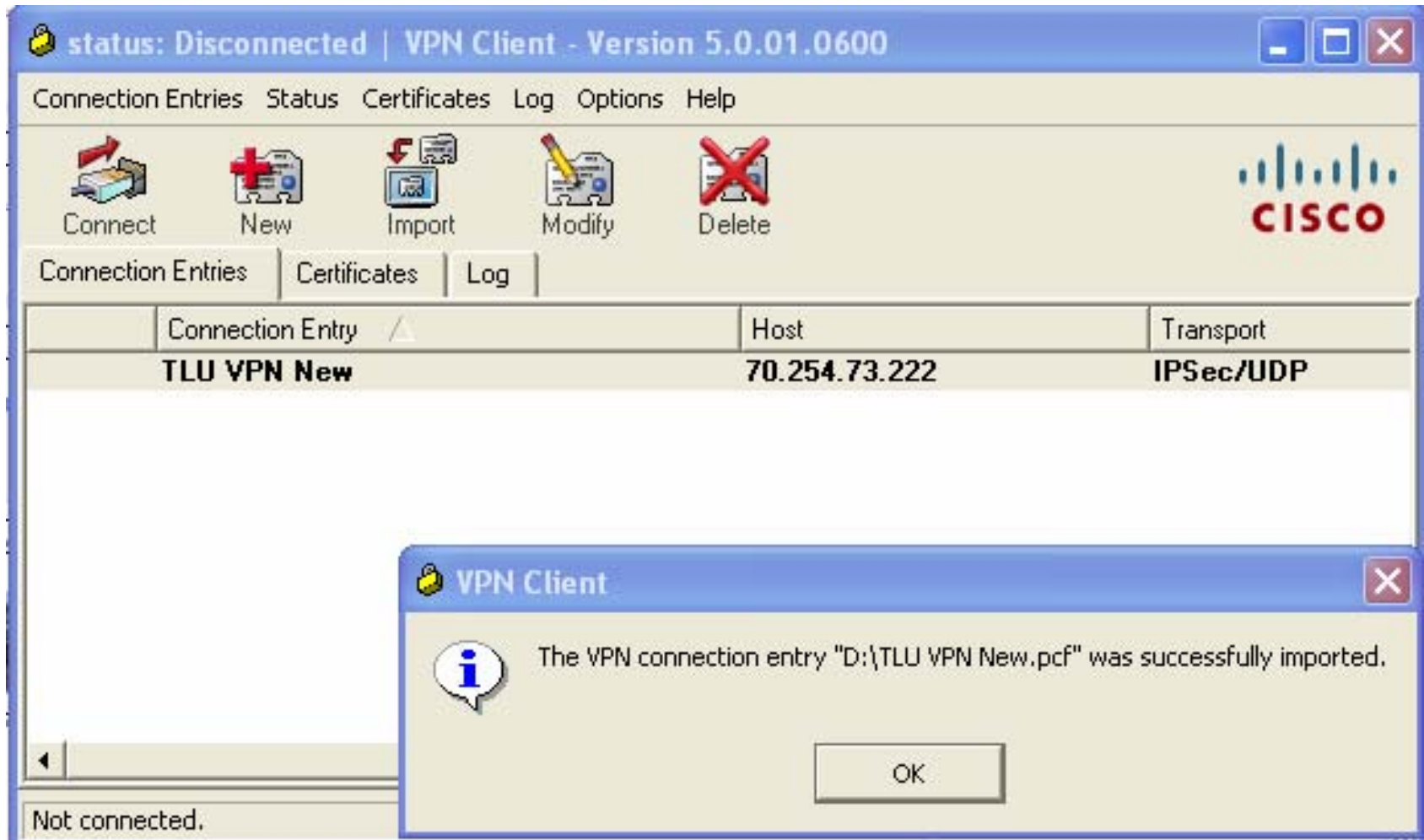
Note: You can download this file from IT Help & Information page:

http://tlu.tlu.edu/is/is_help

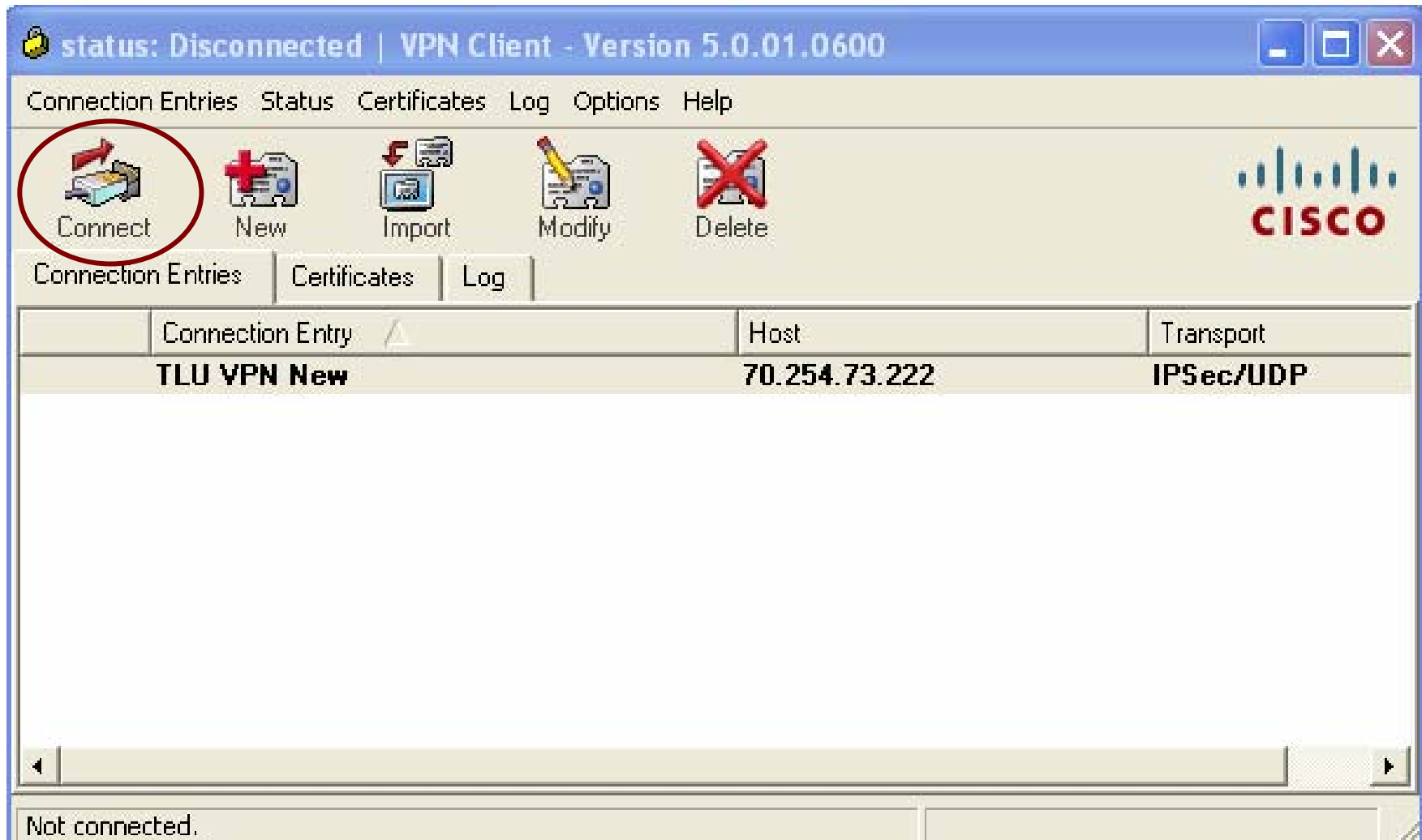
locate: New VPN configuration file



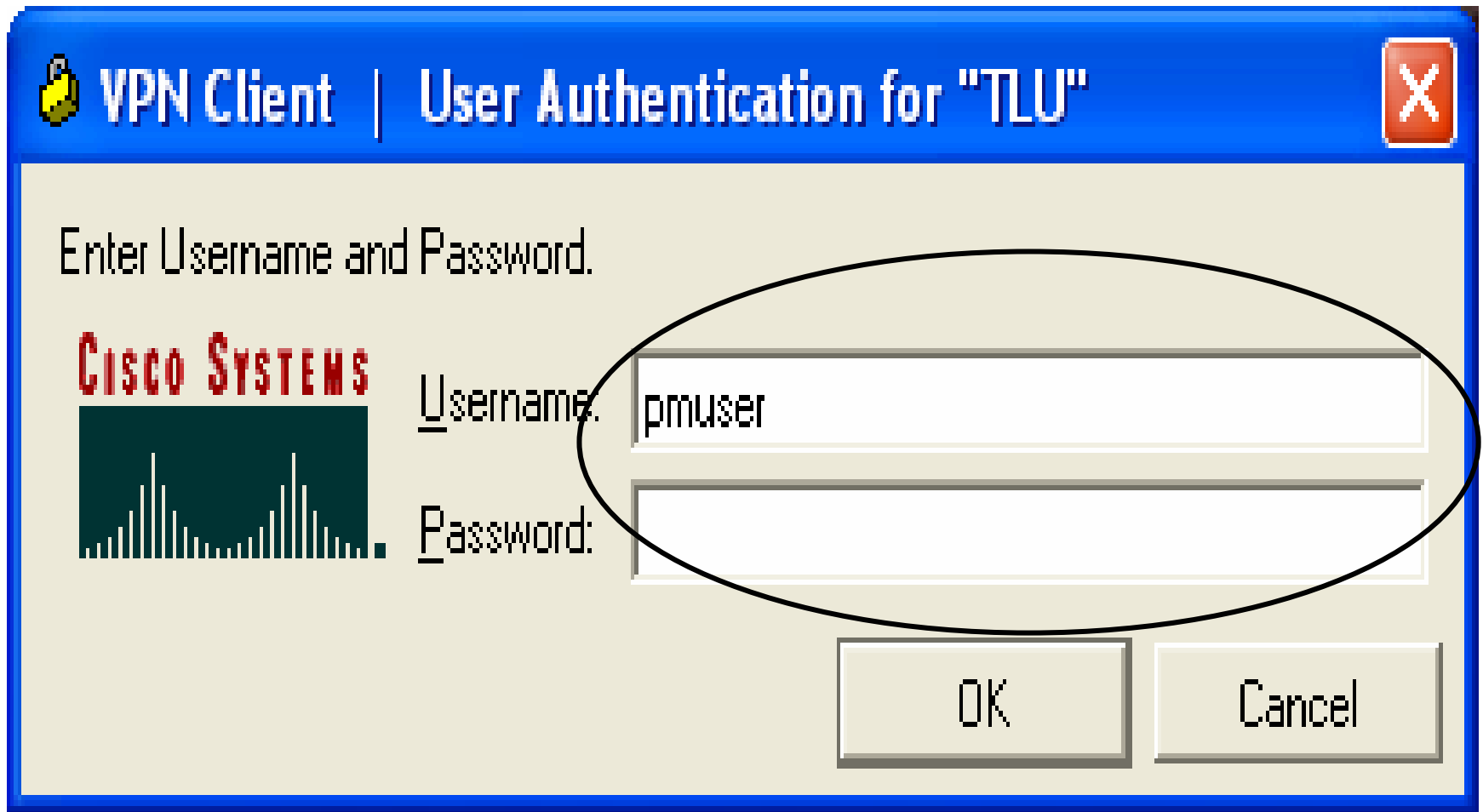
OK



Click Connect button

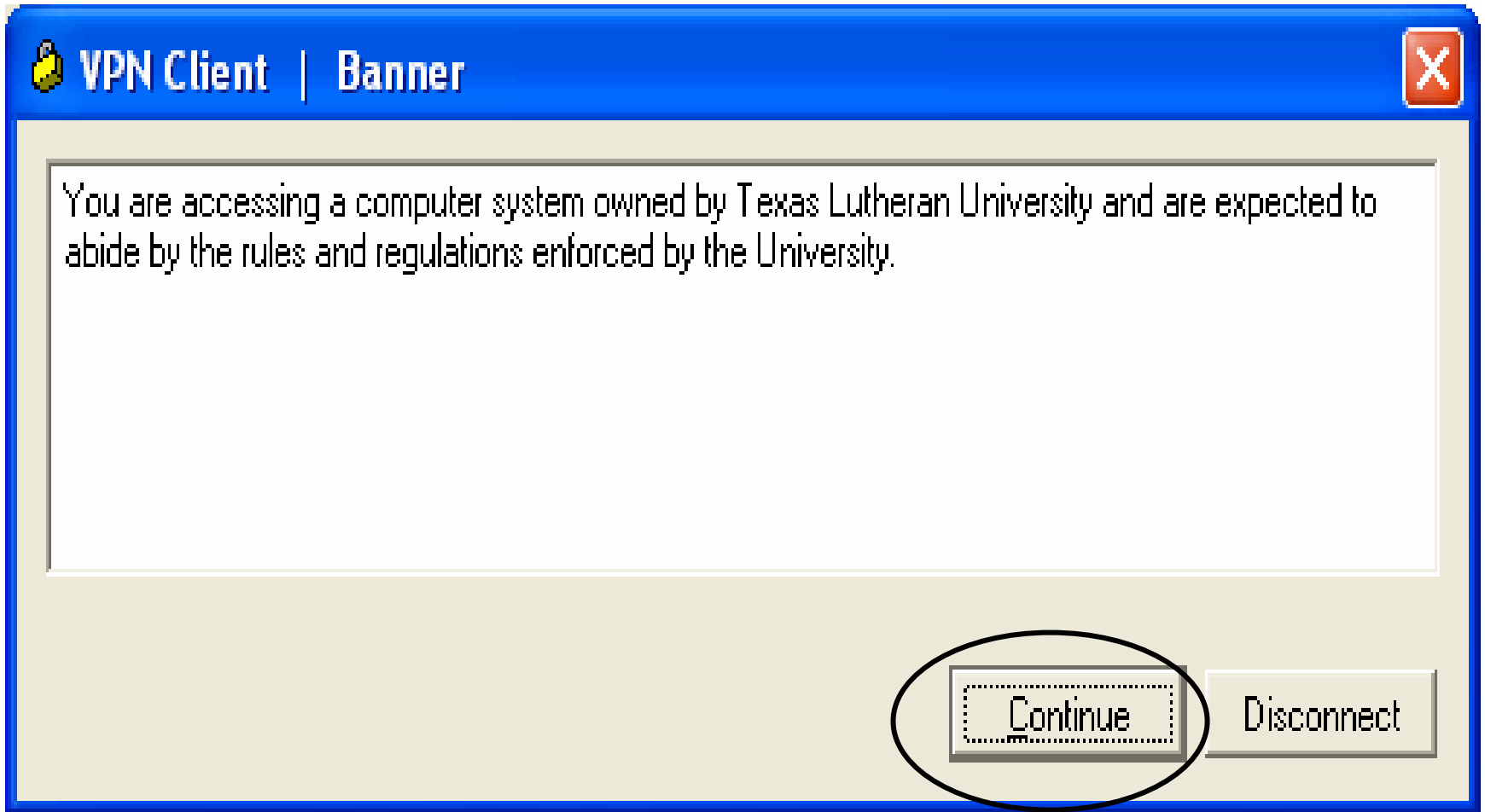


Type your TLU User name and Password

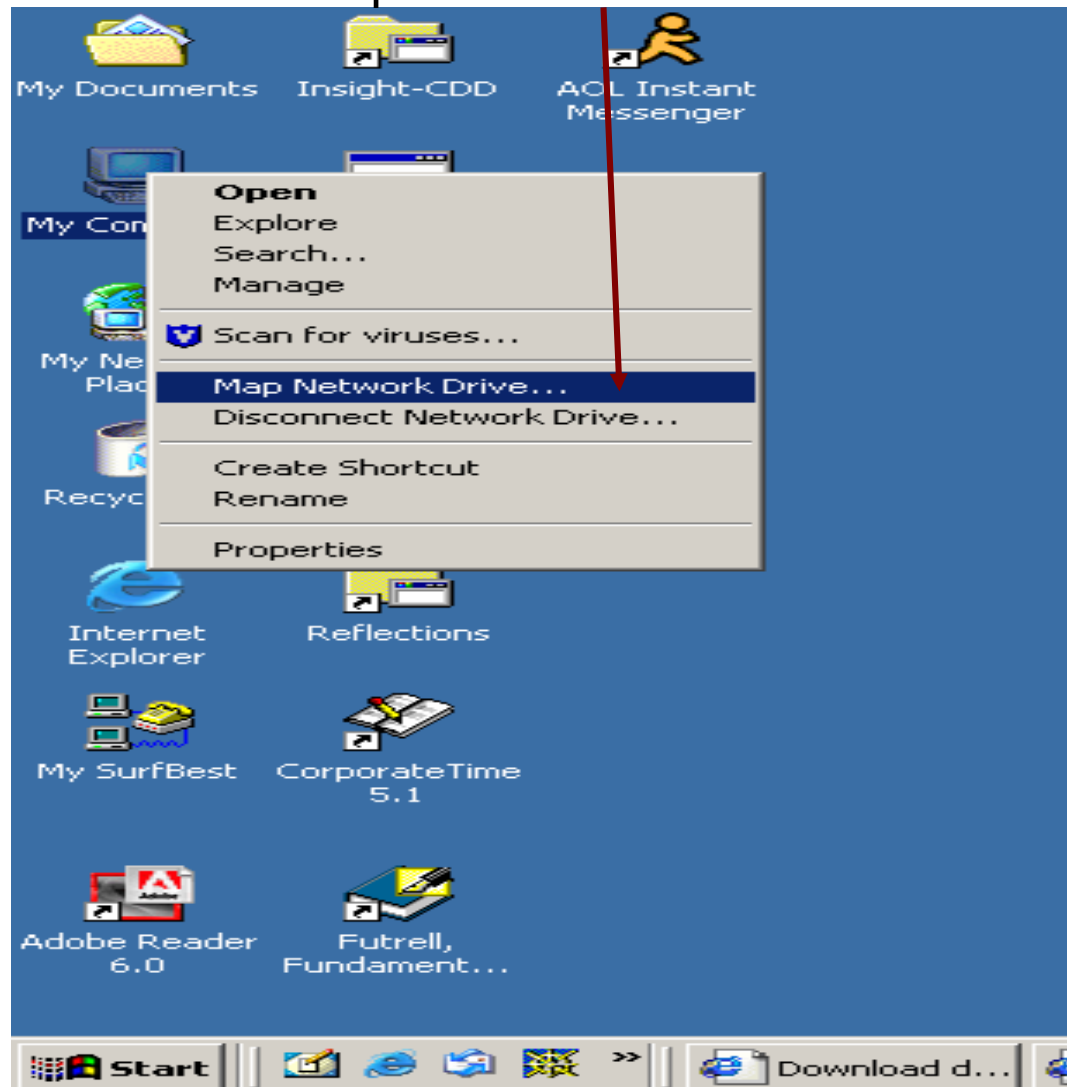


The image shows a Windows-style dialog box titled "VPN Client | User Authentication for 'TLU'". The dialog has a blue title bar with a yellow padlock icon on the left and a red close button on the right. The main area is light beige and contains the text "Enter Username and Password." at the top. Below this, on the left, is the Cisco Systems logo (the word "CISCO SYSTEMS" in red above a green bar chart). To the right of the logo are two input fields: "Username:" with the text "pmuser" and "Password:" which is empty. A black oval highlights both input fields. At the bottom of the dialog are two buttons: "OK" and "Cancel".

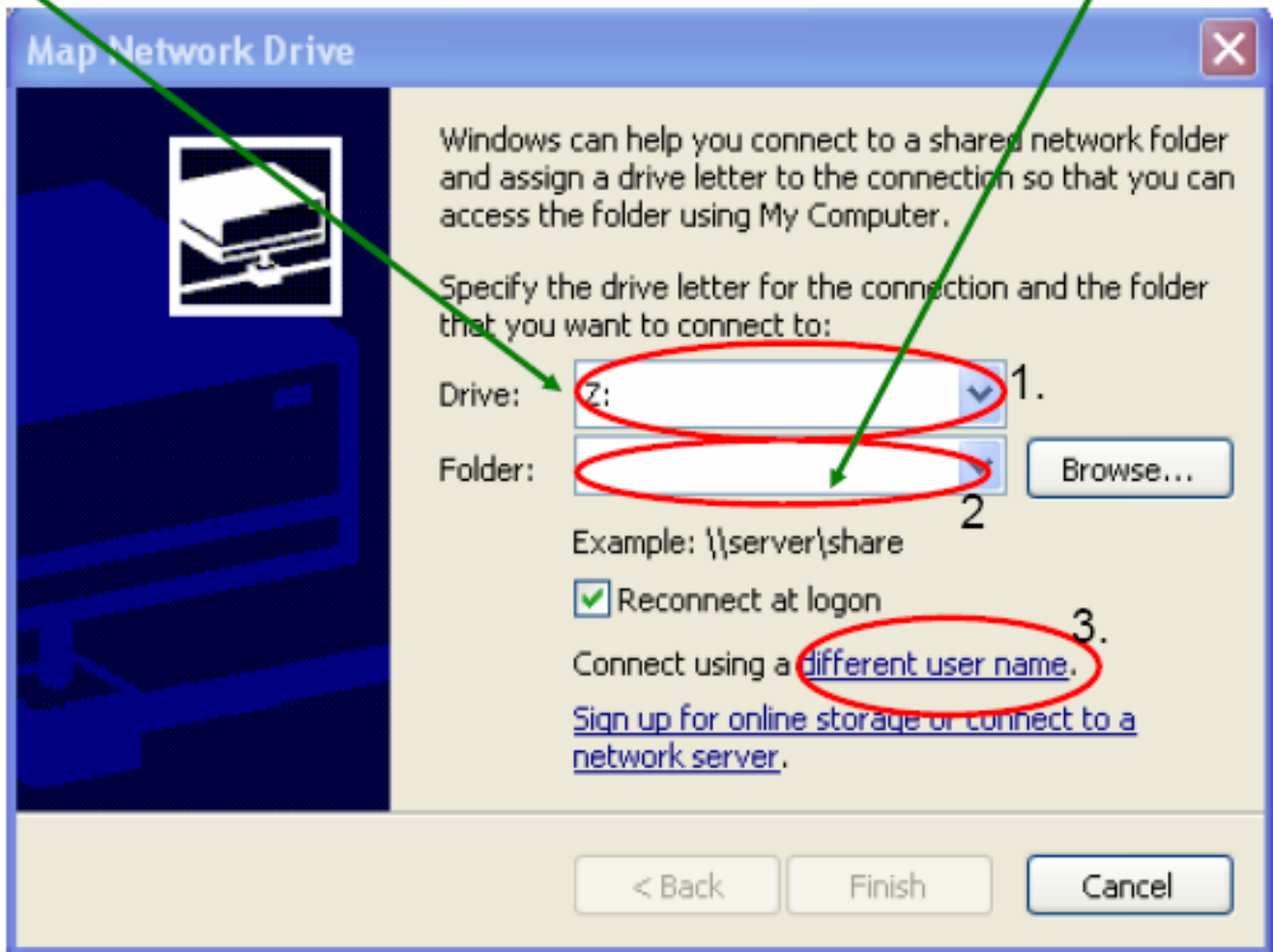
Click Continue



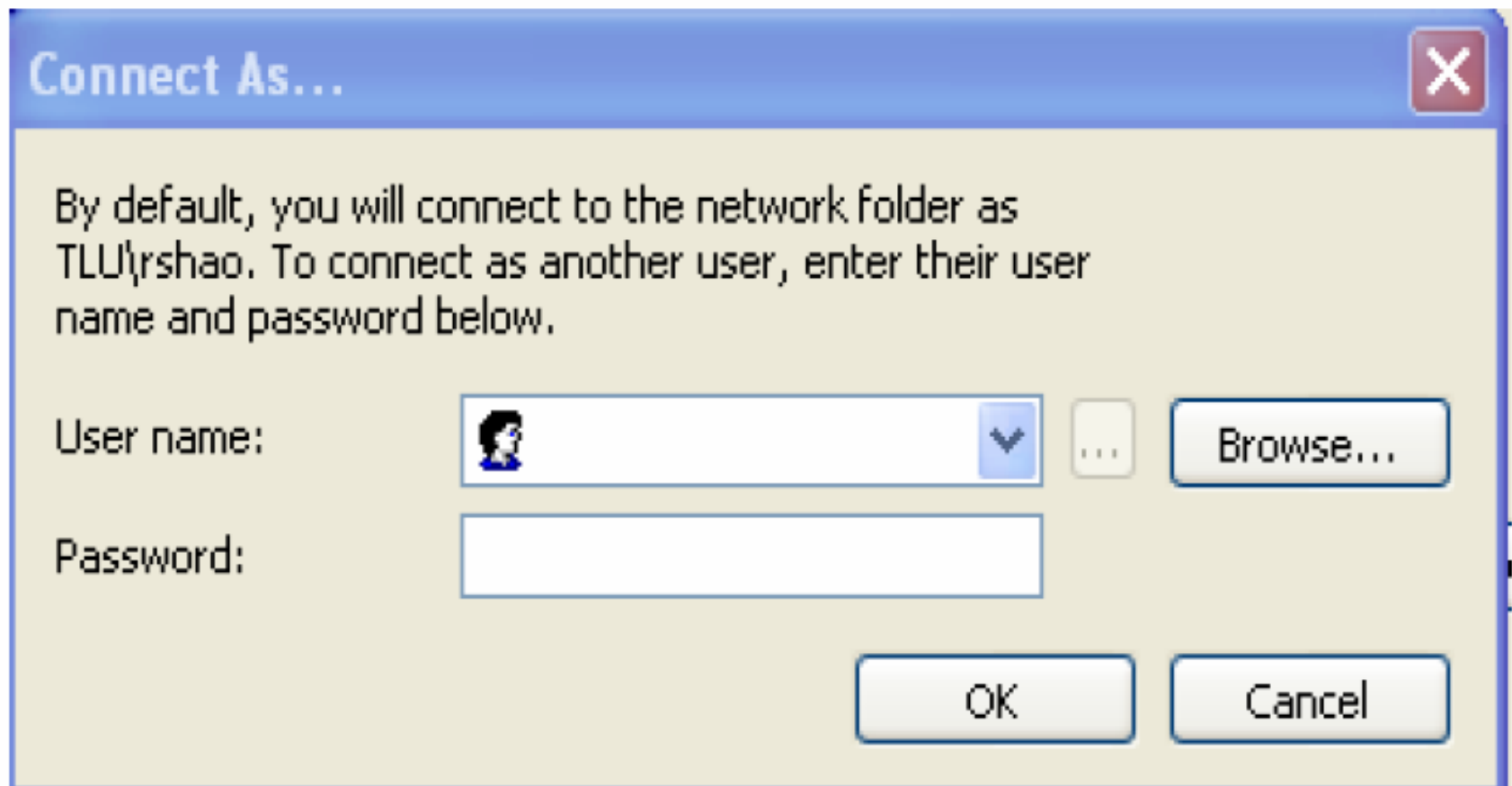
To Connect to you 'Y' drive > Right Click My Computer Icon > Select 'Map Network Drive'



(1) Select Drive letter 'Y' (2) Enter the following: \\tlufs\your user name
e.g. \\tlufs\rshao > (3) Select 'Connect using a different user name link



Type: tlu\user name.... and password as shown below > OK



You now have access to your 'Y' Drive from off-campus



rshao on 'Samba Server 3.0.22
(tlufs)' (Y:)