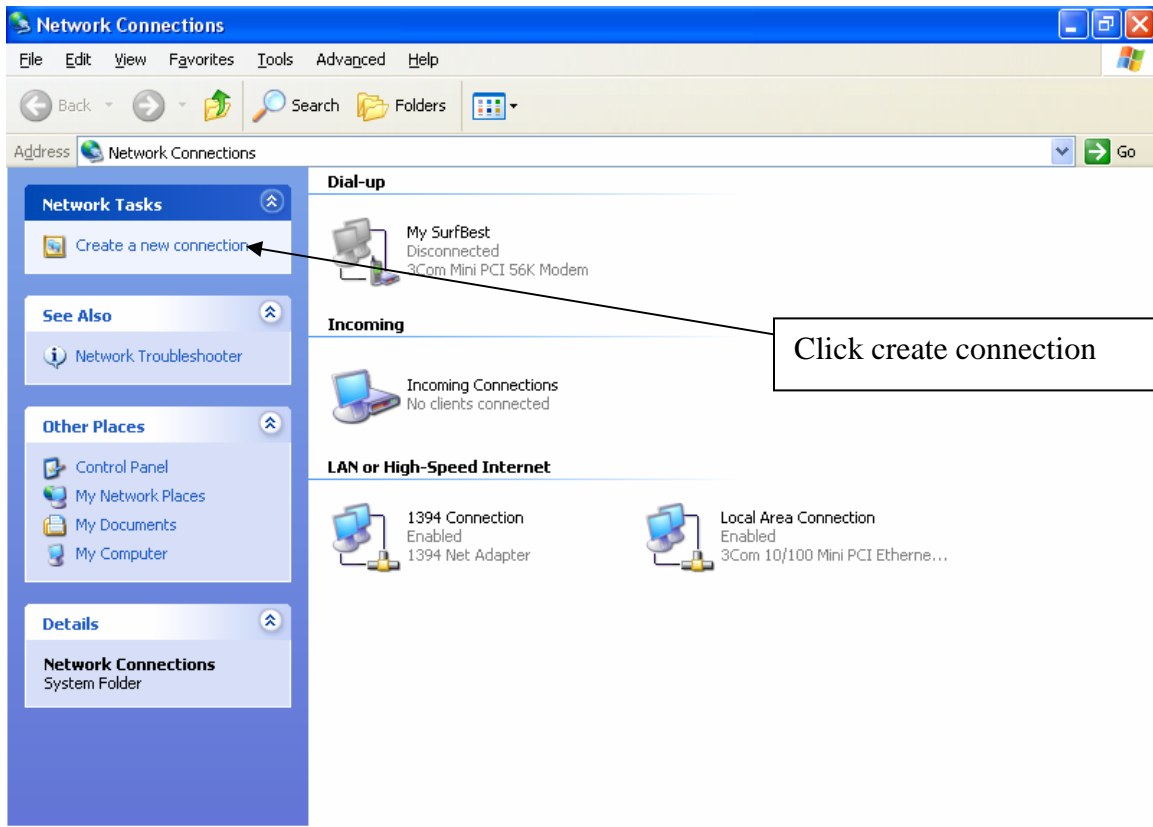


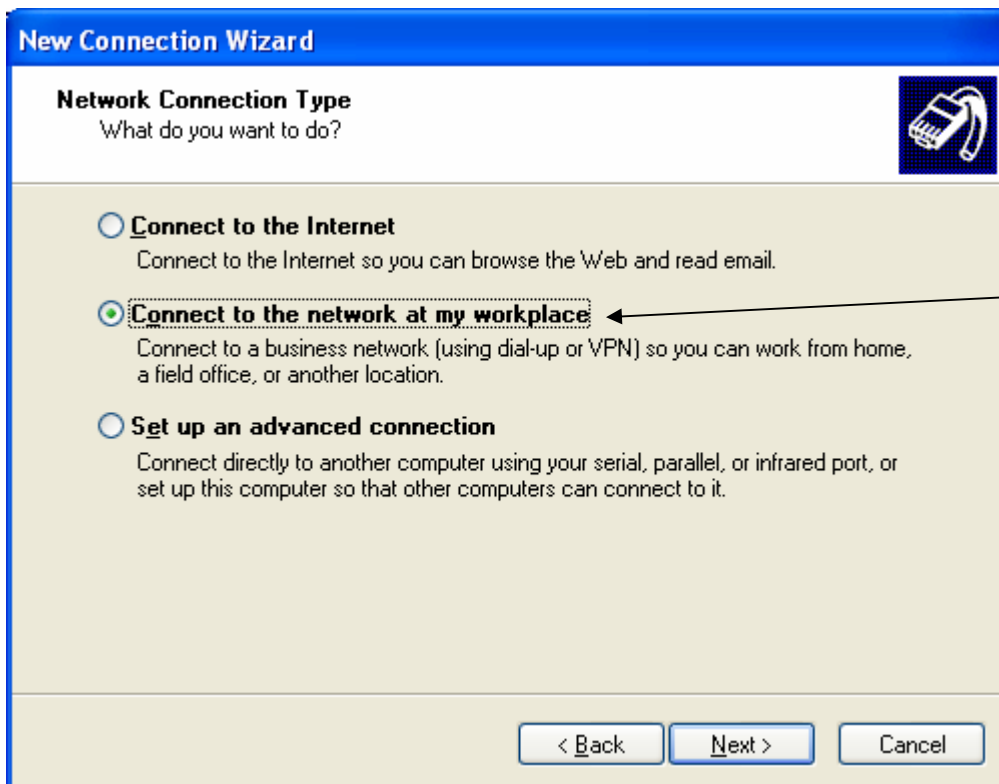
Set TLU Dial up connection in Windows XP

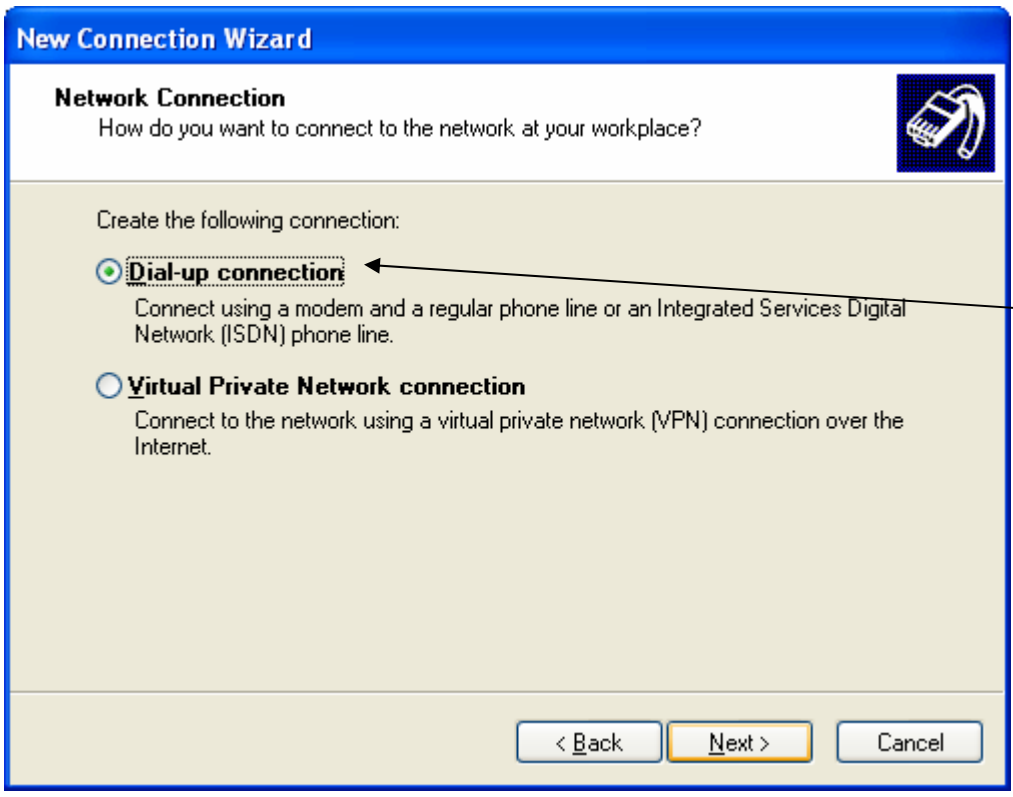


Go to Start > Connect To > Show all connection.



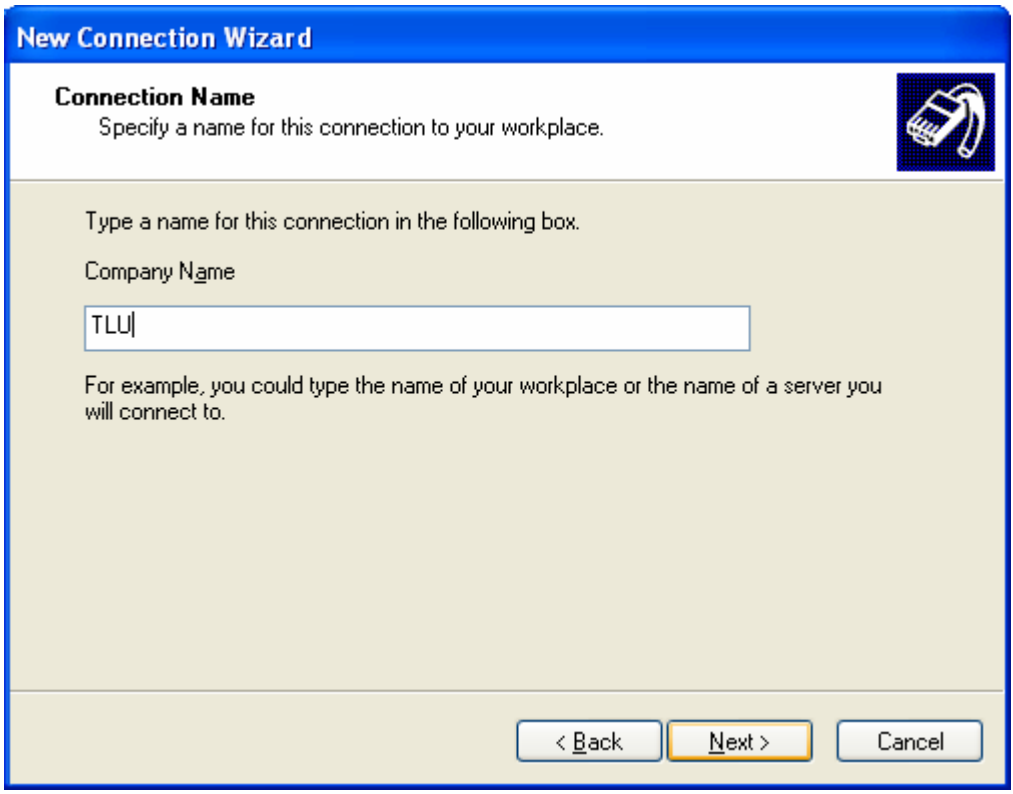
Select Next



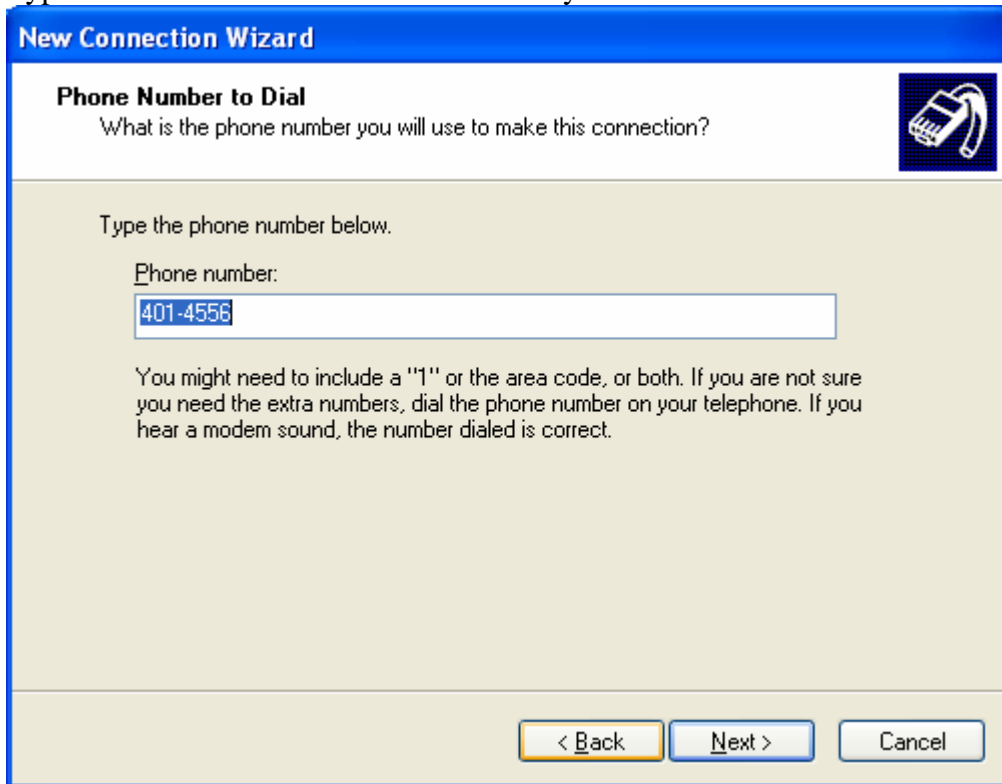


Select first option > click Next

Type TLU > then Next



Type the number as shown below. You may need to include a "1" or the area code



New Connection Wizard

Phone Number to Dial
What is the phone number you will use to make this connection?

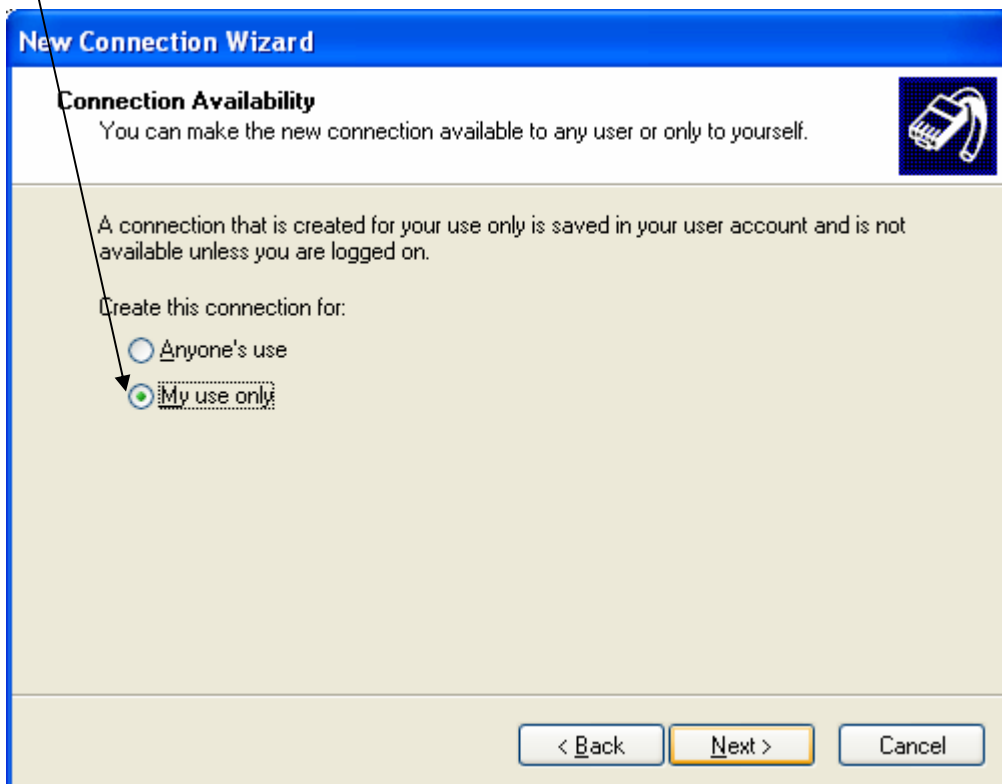
Type the phone number below.

Phone number:

You might need to include a "1" or the area code, or both. If you are not sure you need the extra numbers, dial the phone number on your telephone. If you hear a modem sound, the number dialed is correct.

< Back Next > Cancel

Select second option > click Next



New Connection Wizard

Connection Availability
You can make the new connection available to any user or only to yourself.

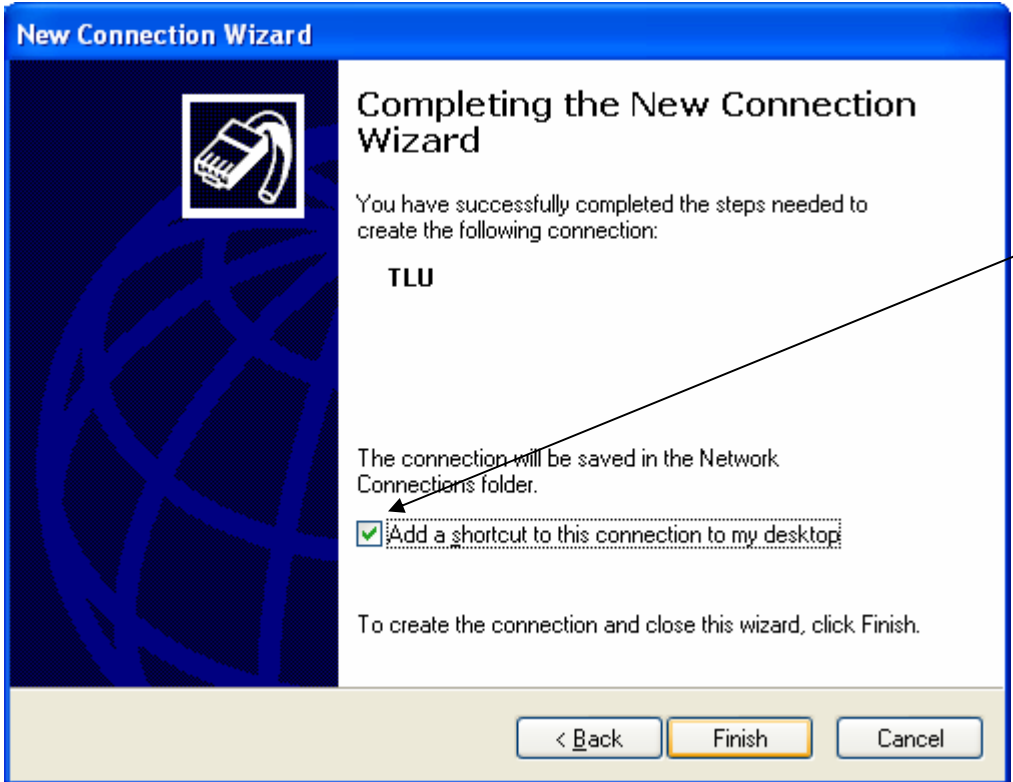
A connection that is created for your use only is saved in your user account and is not available unless you are logged on.

Create this connection for:

Anyone's use

My use only

< Back Next > Cancel



Click check box to add shortcut to your desktop.
Click Finish