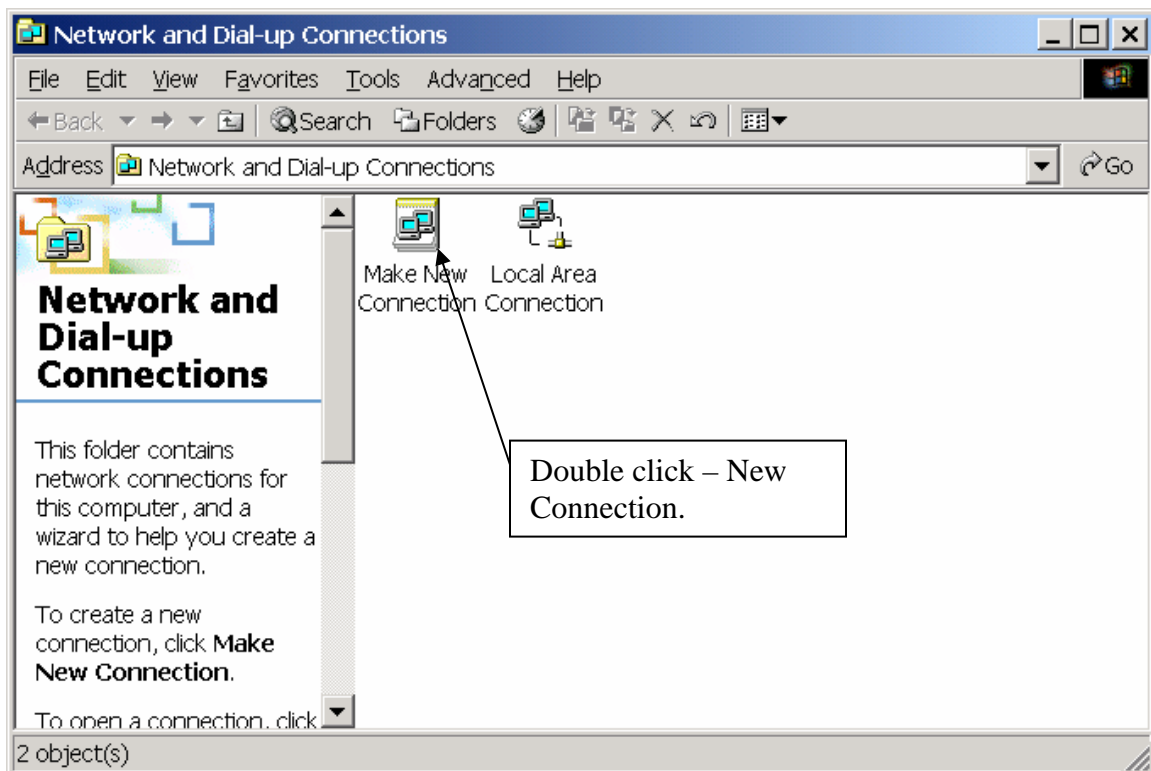
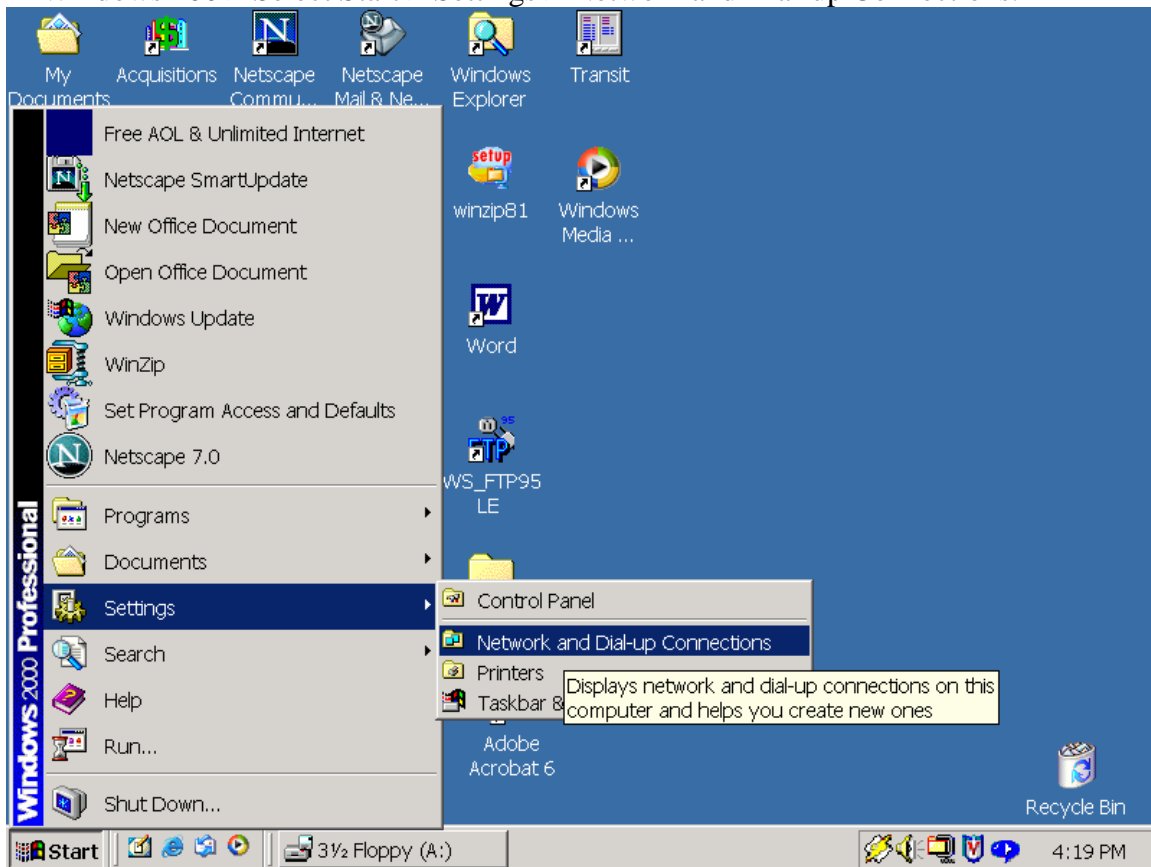


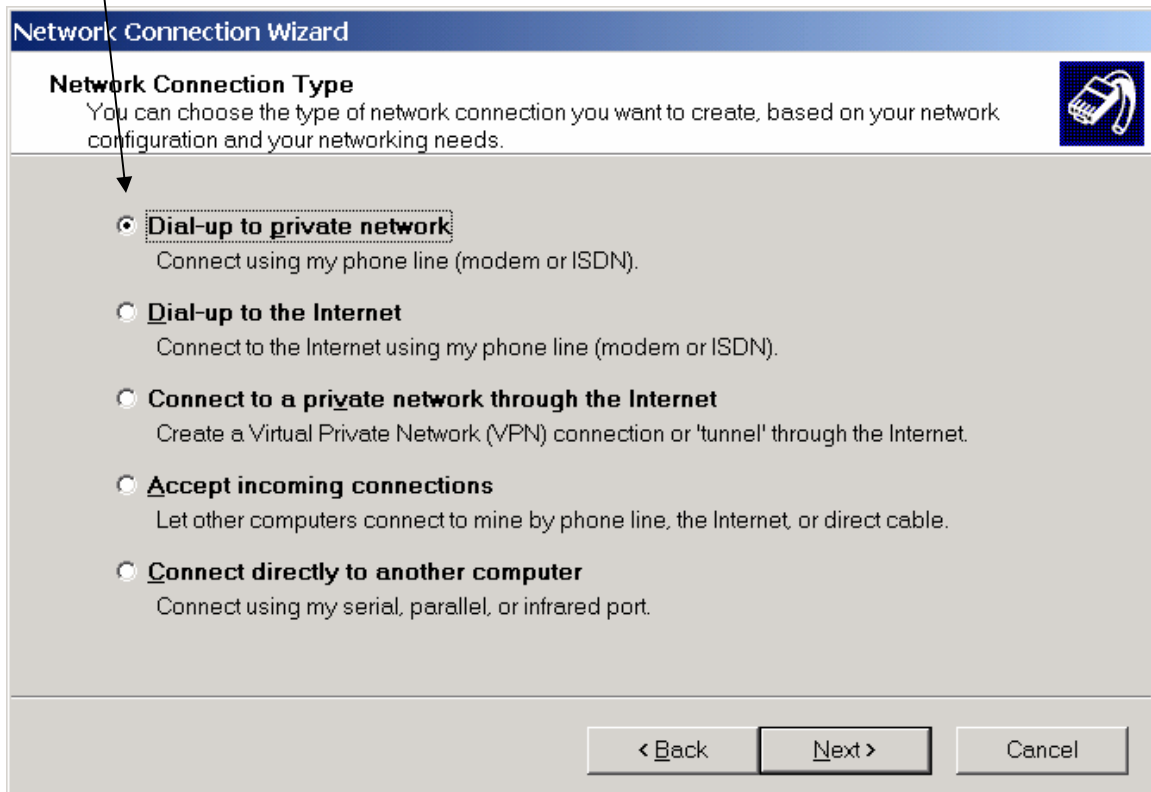
In Windows 200 > Select Start > Settings > Network and Dial-up Connections.



Click Next



Select the first option > click Next.



Type the number as shown below. Use dialing rules if necessary > click Next

Network Connection Wizard

Phone Number to Dial
You must specify the phone number of the computer or network you want to connect to.

Type the phone number of the computer or network you are connecting to. If you want your computer to determine automatically how to dial from different locations, check Use dialing rules.

Area code: Phone number:

Country/region code:

Use dialing rules

< Back Next > Cancel

Select the second option > Click Next

Network Connection Wizard

Connection Availability
You may make the new connection available to all users, or just yourself.

You may make this connection available to all users, or keep it only for your own use. A connection stored in your profile will not be available unless you are logged on.

Create this connection:

For all users

Only for myself

< Back Next > Cancel

Type TLU as shown below > select Check box to add shortcut > click Finish

Network Connection Wizard



Completing the Network Connection Wizard

Type the name you want to use for this connection:

To create this connection and save it in the Network and Dial-up Connections folder, click Finish.

To edit this connection in the Network and Dial-up Connections folder, select it, click File, and then click Properties.

Add a shortcut to my desktop

< Back Finish Cancel