

Accessing TLU Network From Off-campus

TLU supports off-campus access to its internal network through the use of Virtual Private Networking (VPN). VPN allows for secure access to our internal network from off campus locations through the Internet. This document provides complete instructions on how to setup VPN on your personal computer.

- 1) [Downloading the VPN Client & VPN Configuration File](#)
- 2) [Installation and Setup](#)

Optional: [Mapping Your Y: Drive](#)

(1) Downloading the VPN Client & Configuration File

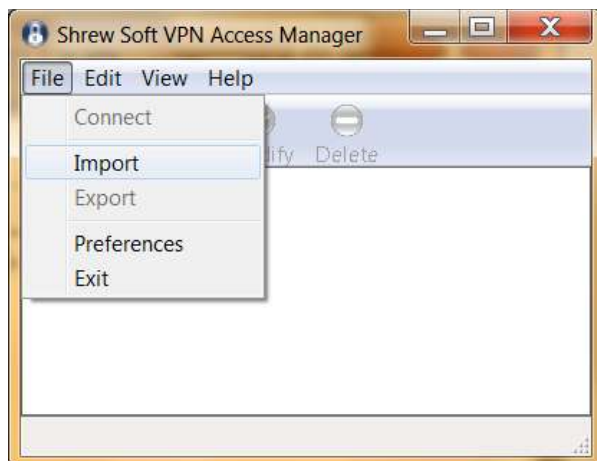
You can download both the VPN client & the VPN configuration file from the TLU [Intranet](#) page under *Information Technology → Help, Information & Downloads* or click the links here:

<http://tlu.tlu.edu/i/is/iss/download/vpn-client-2.1.5-release.exe>

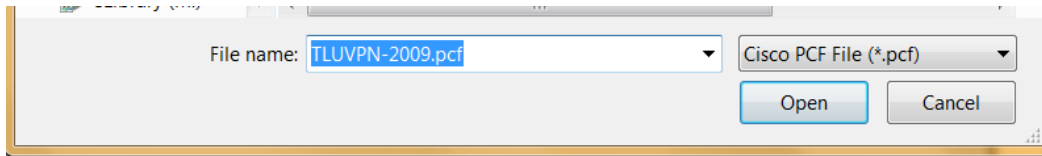
<http://tlu.tlu.edu/i/is/iss/download/TLUVPN-2009.pcf>

(2) Installing & Setting Up the VPN Client

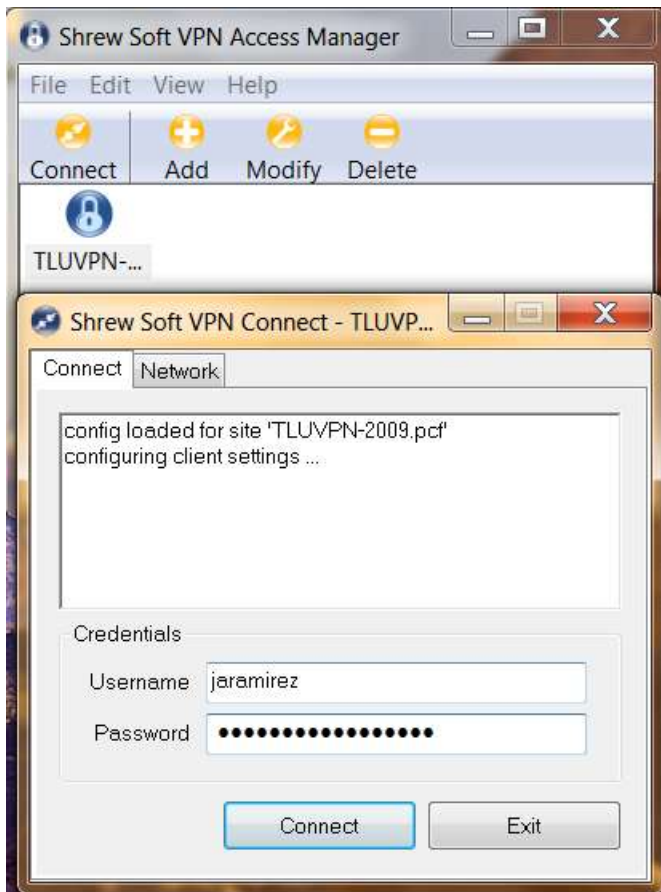
- Install the VPN client software using all of the default settings.
- Open the VPN Client software. By default it is under:
Start → All Programs → ShrewSoft VPN Client → Access Manager
- Import the configuration profile by Choosing *File → Import*



- Select *Cisco PCF File* (important) as the file type, and locate the VPN configuration file you downloaded. Click Open.



- Click on the Lock icon that now appears & click Connect. Enter in your TLU credentials click the connect button.

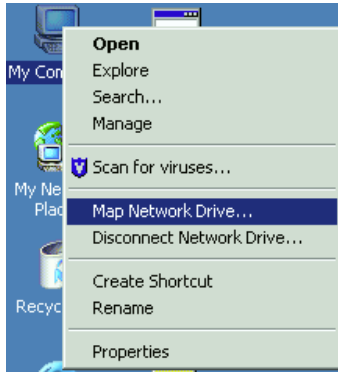


- ✓ After a moment you will be connected to the TLU network. You may disconnect at any time by clicking the “Disconnect” button or by closing the client entirely.

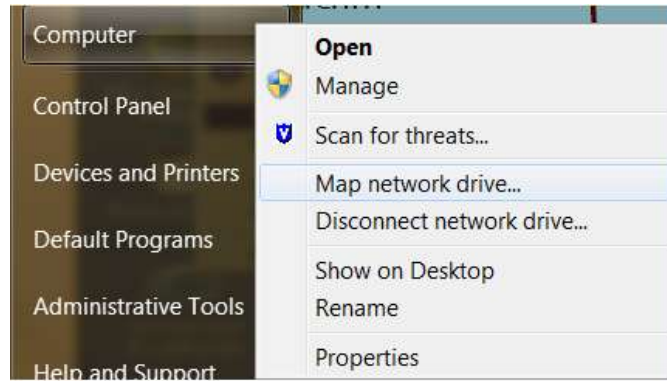
❖ Mapping Your Y: Drive

- To Connect to your Y: Drive, Right Click on *Computer* and Select *Map Network Drive*

Windows XP

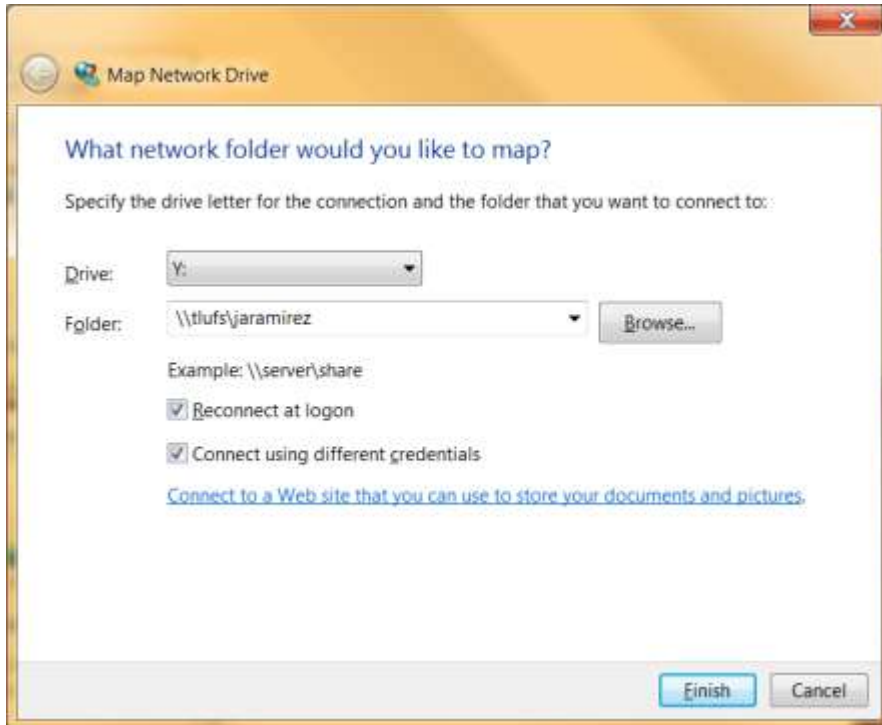


Windows Vista & Windows 7



- Select *Y:* as the drive letter. Under *Folder* enter in your username. Check *Reconnect at logon* and *Connect using different credentials* and click finish.

- ❖ Note: Students will need to use `\\tlustdfs` instead of `\\tlufs`



- On the Security Window, enter in your username & password and click OK.



- ✓ Your Y: drive is now accessible. To remove it, right-click the Network Drive and select *Disconnect*

