

Mac Printing to Campus Copiers

IT now supports printing to copiers from Macintosh computers. This guide includes instructions for setting up the printer. Keep in mind that you will still require a copy code to print. For further assistance, contact IT at (830) 372-6000 or via email ishelp@tlu.edu

- **First, download the copier printer drivers from here:**

http://support.apple.com/downloads/Lanier_Printer_Drivers_for_Mac_OS_X_v10_6

 **Lanier Printer Drivers for Mac OS X v10.6**



[Download](#)

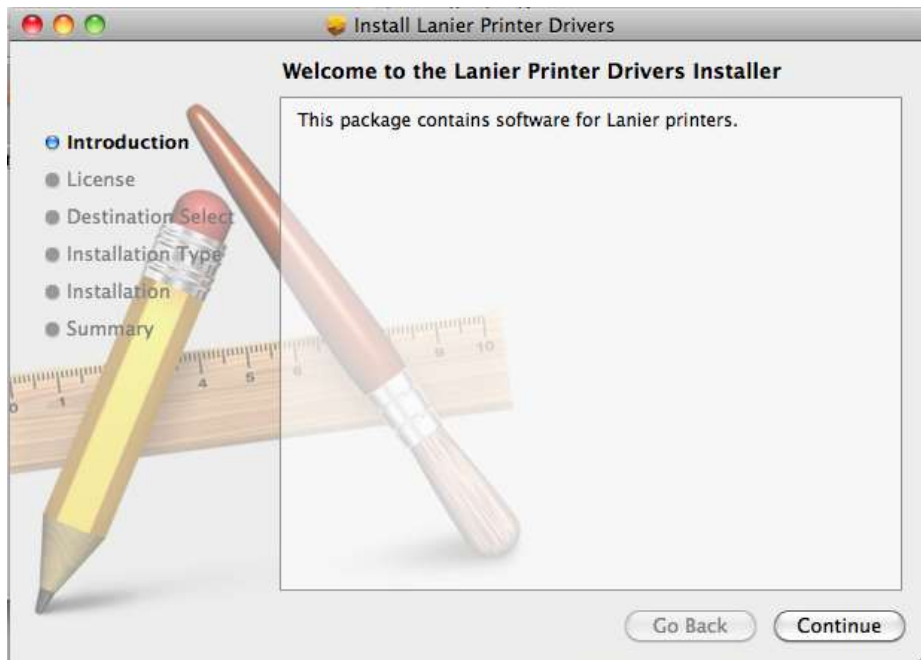
Version: 2.0
Post Date: August 27, 2009
Download ID: DL910
File Size: 19.8MB

About Lanier Printer Drivers for Mac OS X v10.6
This download includes Lanier printing software that shipped with Mac OS X v10.6 (Snow Leopard).

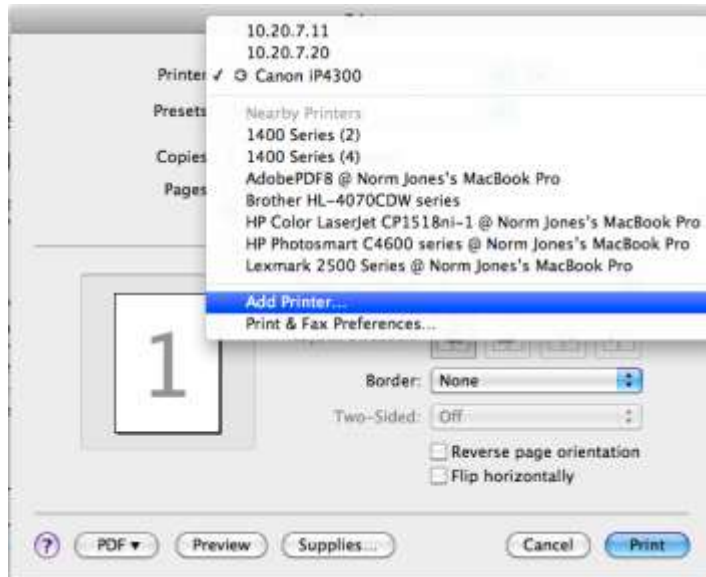
System Requirements

- Mac OS X 10.6

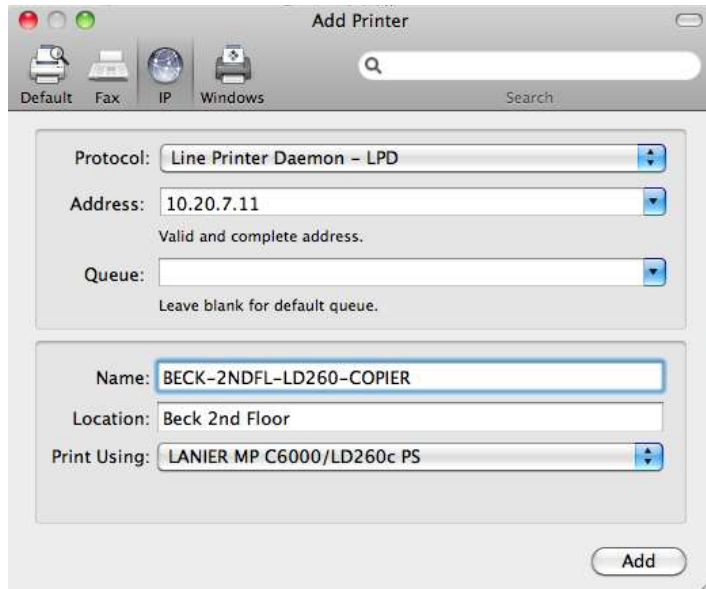
- **Install the drivers**



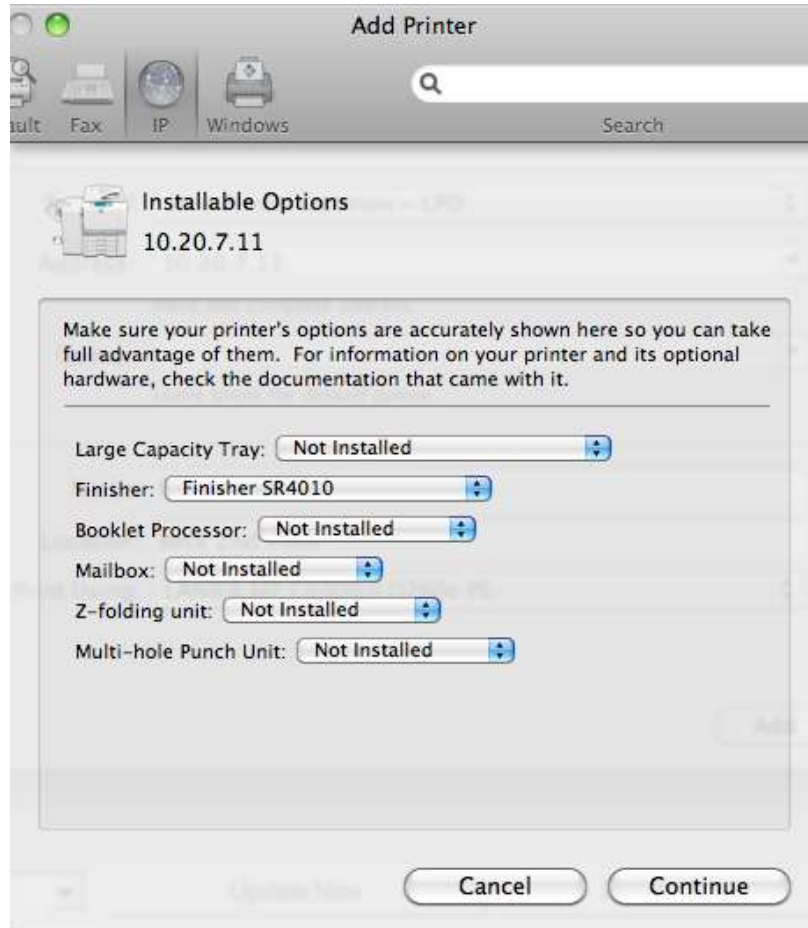
- When you go to print, choose “Add Printer...” from the dropdown menu



- Click on the “IP” tab, and enter in a “Name” and the IP address for the copier. (See listing at end of document). Click add.



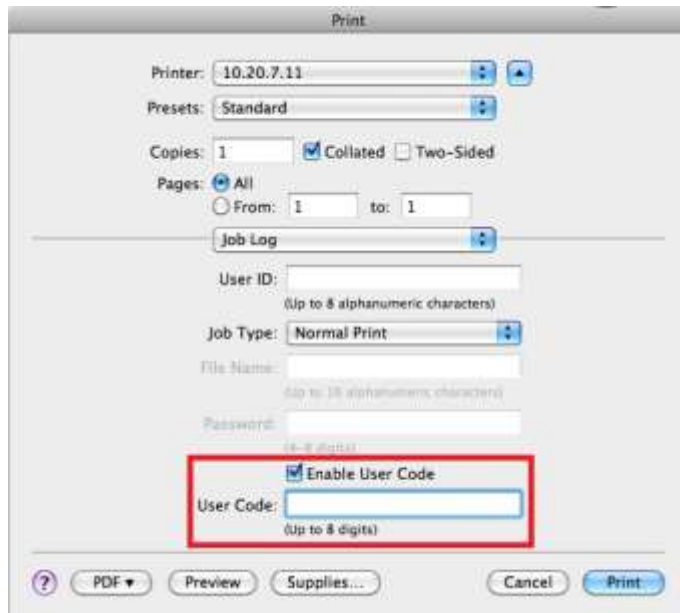
- Select SR4010 as the finisher and click continue.



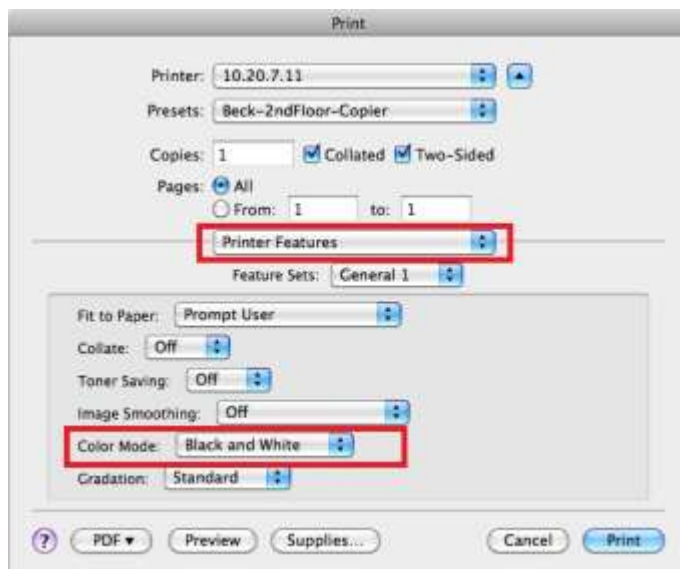
- Back on the print dialog window expand the printer's options and select "Job Log".



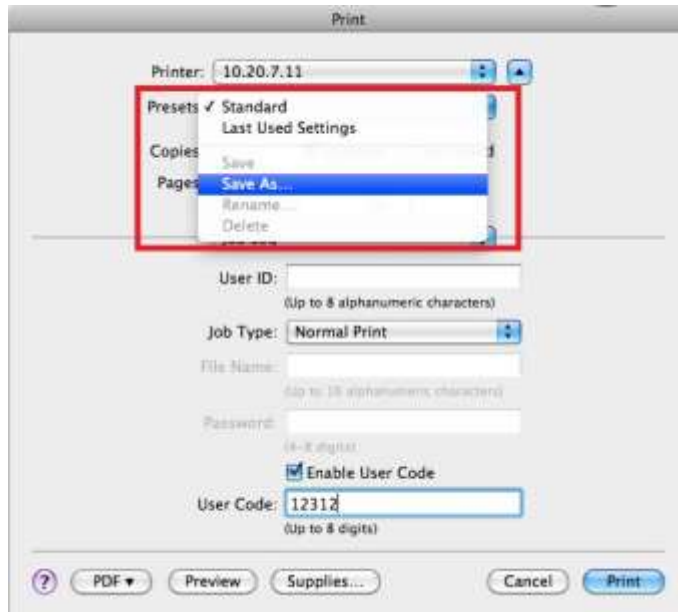
- **Enable “User Code” and Enter in your copy code.**



- **Select “Printer Features” from the Dropdown and change the default mode from “Color” to “Black and White”**



- For convenience, save this configuration by choosing “Save As...” from the presents menu.



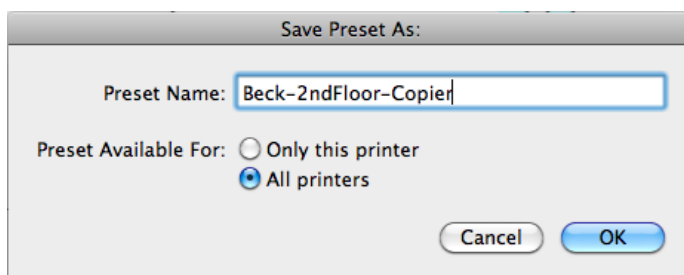
- Name the preset.

Tip: you can make a present for color, black/white, different copy codes, duplexing, etc.

Example:

Beck-2ndFloor-Copier-Color

Beck-2ndFloor-Copier-BlackWhite



- You can now print to the copiers on campus. Remember to select your preset after you have selected your printer.

Copier List

IP	Location
10.20.7.17	Moody
10.20.7.18	Langner
10.20.7.19	EmmaFrey
10.20.7.20	Tschoepe 2 nd Floor
10.20.7.21	Library
10.20.7.22	Jones
10.20.7.23	FineArts
10.20.7.24	President's Office
10.20.7.25	Bookstore
10.20.7.26	Facilities
10.20.7.27	Tschoepe Downstairs
10.20.7.28	Residence Life
10.20.7.29	Campus Ministry
10.20.7.31	Human Resources
10.20.7.32	Police
10.20.7.33	Hein
10.20.7.34	Student Life
10.20.7.36	Hahn Annex